

Report of the Fifth Meeting of the
Compliance Committee of the
Southern Indian Ocean Fisheries Agreement
(SIOFA)

1-5 July 2021

Table of Contents

Agenda item 1 – Opening of the session	4
Agenda item 1.1 Opening statements	4
Agenda item 1.2 Admission of observers	4
Agenda item 2 – Administrative arrangements.....	4
Agenda item 2.1 Adoption of the agenda.....	4
Agenda item 2.2 Confirmation of meeting documents	4
Agenda item 2.3 Appointment of rapporteurs	5
Agenda item 3 – SIOFA Compliance Monitoring Scheme	5
Agenda item 4 – New or Amended Conservation and Management Measures (CMMs)	7
Agenda item 4.1 Proposals for amendments to Conservation and Management Measures	7
Agenda item 4.2 Proposals for new Conservation and Management Measures	9
Agenda item 5 – Listing of IUU Vessels	10
Agenda item 5.1 Draft SIOFA IUU vessel List	10
Agenda item 5.2 Current SIOFA IUU Vessel List and intersessional IUU vessels cross listing.....	12
Agenda item 6 – Sightings of non-CCP-flagged vessels reported to the Secretariat... 12	12
Agenda item 7 – Port inspections reports (CMM 2020/08 Port Inspection).....	12
Agenda item 8 – Entry/Exit and transshipment reports (CMM 2019/10 Monitoring).....	12
Agenda item 9 – Review of the status of Cooperating Non Contracting Parties (CNCP)	13
Agenda item 10 – Election of a future Chairperson and vice Chairperson	14
Agenda item 11 – Adoption of the report	14
Agenda item 12 – Close of meeting	14
ANNEX A: OPENING STATEMENT FROM THE CHAIR	15

List of Annexes

Annex A	Opening statement from the Chair
Annex B	List of meeting participants
Annex C	Agenda
Annex D	Table of agenda items and related papers
Annex E	(CC-05-18 rev7) provisional SIOFA Compliance Report
Annex F	(CC-05-08 rev4) Revision of CMM 2019-02 on Data Standards
Annex G	(CC-05-09 rev1) EU+AUS proposal to amend CMM 2020-15
Annex H	(CC-05-10 rev4) FR-OT Proposal to amend paragraph 22 of CMM 2019-14
Annex I	(CC-05-11 rev3) FR-OT HSBI Questionnaire
Annex J	(CC-05-12 rev2) CHN Proposal on port inspection
Annex K	Provisional SIOFA IUU Vessel List
Annex L	(CC-05-07) Comoros letter to SIOFA for 2021 CNCP status
Annex M	South Africa letter to SIOFA for 2021 CNCP status

Agenda item 1 – Opening of the session

Agenda item 1.1 Opening statements

1. Due to Covid-19, unfortunately, the Compliance Committee Chairperson in force, Mr Johnny Louys, was in quarantine after testing positive for Covid-19 and was not able to chair the 5th Compliance Committee meeting. Exceptionally, at the request of the Meeting of the Parties, Dr Chumnarn Pongsri assumed the role of Chairperson for the 5th Compliance Committee.
2. The Chair, Dr Chumnarn Pongsri, opened the correspondence process via SIOFA Circular n° 2021/CC5-01 on 21 June 2021. The Chair's opening statement is available in Annex A. The videoconference was opened on 1 July 2021 at 06:00 UTC. The list of participants is available in Annex B.

Agenda item 1.2 Admission of observers

3. The Chairperson welcomed observers from Comoros, the Deep Sea Conservation Coalition (DSCC), the Food and Agriculture Organization (FAO), and the Southern Indian Ocean Deepsea Fishers Association (SIODFA), as well as the Environmental Justice Foundation (EJF) as a non-governmental-organisation (NGO), and wished a special welcome to South Africa who is attending a SIOFA Compliance Committee Meeting for the first time as an Observer.

Agenda item 2 – Administrative arrangements

4. Several CCPs expressed concerns with regard to the process taken by the Secretariat for the meeting, concerning items to be treated by correspondence and/or video conference and discussion of items prior to the date fixed for the opening of the meeting. These CCPs made clear that no response the correspondence process should not be taken as either abstention or agreement, and does not affect the right to intervene on these (or any) matter in plenary.

Agenda item 2.1 Adoption of the agenda

5. The Compliance Committee provided comments on the provisional agenda via correspondence. The Secretariat revised the provisional agenda based on the comments received and presented the agenda as outlined in CC-05-03Rev1. The agenda was adopted by the Compliance Committee (Annex C).

Agenda item 2.2 Confirmation of meeting documents

6. The Chair advised that meeting documents are available on the website and that the list of meeting documents is presented in CC-05-04Rev1 (Annex D).
7. Several CCPs noted inconsistencies in how different versions of documents are labelled. The Data Manager explained that most revised documents are labelled with a revision number, with the exception of the list of participants (CC-05-19) and the table of meeting documents (CC-05-04). As these documents are updated several times a day, they only have a revision date on the first page, rather than a revision number, and the versions available on the website are the latest ones. The European Union pointed out that the labelling of documents with a revision number is an established practice and has been the methodology at previous Compliance Committee meetings and requested that the Secretariat label all revised documents consistently with a revision number.

8. The Compliance Committee did not discuss CC-05-INFO-08, which provides an update on the development of the FAO ABNJ Deep-Sea Fisheries (DSF) Project and introduces aspects that are relevant to the work of the SIOFA Compliance Committee, which was submitted by the FAO.

Agenda item 2.3 Appointment of rapporteurs

9. The Executive Secretary proposed Mr Alexander Meyer (Urban Connections, Tokyo), who served as rapporteur for this year's meetings of the Scientific Committee (SC6) and its working groups (PAEWG3, SERAWG3), as rapporteur for this meeting.
10. The Compliance Committee agreed to appoint Mr Alexander Meyer as rapporteur.

Agenda item 3 – SIOFA Compliance Monitoring Scheme

11. The Secretariat presented an overview of the information in the draft SIOFA Compliance Report (dSCR) outlined in CC-05-18Rev1. CCPs provided comments and noted that the 'not assessed' status had been applied inconsistently, and not in accordance with the CMM; and that the term 'not applicable', which is not a valid compliance status, had been used. CCPs noted that the compliance table included many instances where there was no presumption of non-compliance. The Secretariat presented a revised version of the dSCR in CC-05-18Rev2. The Compliance Committee reviewed the dSCR and assigned the compliance status and relevant follow-up actions in accordance with the terms of Conservation and Management Measure (CMM) 2020/11.
12. The European Union requested clarifications from Australia about its implementation of paragraph 10(1)(a) of CMM 2020/01, noting that from Australia's disclosure of its interim bottom fishing measures it appears that Australia applies a catch limit to a pool made up of different species, regardless of the share of any species in that pool, and that Australia considers that it can fish any species in that pool up to the catch limit. The European Union also noted that Australia has not fished historically (1999-2016) for *Dissostichus* spp. and *Polyprion* spp. in the SIOFA Area and that it could therefore be expected that Australia would not increase its catches of those species based on the historical catches of other species. The European Union considered that such an interpretation and application of the catch limit was inconsistent with the CMM and with how catch limits are applied in other regional fisheries management organisations (RFMOs), where limits apply to catches per species rather than to a pool of catches from miscellaneous species. The European Union further noted that Australia's fishing effort had also increased in recent years in particular its longline fishing effort, although its longline activity has historically been very low.
13. With regard to the European Union's intervention, Australia noted that CMM2020/01 requires CCPs to limit effort or catch (or both) and that Australia has used catch limits for many years, using a reference period from 1999-2009. There had been no change to the 1100t catch limit applied by Australia for many years. Australia outlined that it considered this approach to be consistent with CMM2020/01 and with the approach taken in various other RFMOs to which was a party. Australia noted that the catch of any individual species subject to a catch limit would be deducted from this overall limit. Australia thanked the European Union for the question but asserted that the European Union's concern appeared to be in relation to the effectiveness of the CMM and not Australia's interpretation of the CMM.
14. Comoros expressed its willingness to improve its compliance status. It explained that its vessel is based in Mauritius and consists of a mother ship that deploys several

small boats on which it is impossible to board observers. Comoros is considering to put an observer on board the mother ship. The captain also uses a logbook format that does not match the SIOFA CMM requirements.

15. Some CCPs raised concerns with the use of group codes for reporting species information, noting that it is not as useful for scientific purposes as FAO codes.
16. The Compliance Committee was unable to reach consensus on the assessment of the status of Chinese Taipei's compliance with the obligation stipulated in paragraph 15 and 16, CMM 2019/10 (Monitoring). The Compliance Committee agreed that Chinese Taipei has been non-compliant with this obligation for consecutive years. Although this would normally warrant a status of 'critically non-compliant', some CCPs believed that Chinese Taipei faced special circumstances that should be taken into account. These CCPs noted Chinese Taipei's willingness to improve its compliance and its outreach and educational efforts, as well as Chinese Taipei's explanation that the transshipments it has reported are legally authorised and are being monitored in accordance with the relevant resolution adopted by the Indian Ocean Tuna Commission (IOTC) and the relevant management measures adopted by the Convention for the Conservation of Southern Bluefin Tuna (CCSBT).
17. Several CCPs expressed concern over the large amount of deep-water shark bycatch reported by one European Union vessel and the fact that the adoption of CMM 2019/12 (Sharks) had failed to result in a significant decline in the amount of deep-water shark catch/bycatch, which would have been expected when the prohibition on targeting sharks was introduced, expressing concern that the proportion of sharks was not consistent with bycatch. The European Union shared the concerns expressed by other CPPs and pointed out that catches of deep-water shark have in fact decreased. Furthermore, it explained that CMM 2019/12 (sharks) does not set any bycatch limits and that it has therefore adopted move-on rules in the event that its vessels encounter deep-water sharks, as a voluntary measure to reduce the amount of deep-water shark bycatch. Some CCPs requested that the European Union provide additional information regarding how many times the move-on provisions have been triggered in the past year to help establish the context in which these vessels were operating, noting the potential need to include bycatch limits in CMM 2019/12. The Compliance Committee requested that the Scientific Committee review the level of mortality of deep-water sharks and provide advice on potential sustainability risks and management options, as well as to review the effectiveness of the European Union's move-on rules.
18. Concerning the assessment of the status of Australia's compliance with the obligation stipulated in paragraphs 35-36, CMM2020/15 (Management of Demersal Stocks), as 'non-compliant', Australia explained the overall catch was small which makes it more difficult to meet the required overlap rate than when there is a larger sample size. Australia pointed out the difficulty of reaching the required tagging levels in such circumstances and suggested that the Scientific Committee should review the appropriate tagging levels for toothfish catch.
19. The Cook Islands expressed significant concerns with the approach the Secretariat has applied to the compliance monitoring process this year, pointing out that the initial assessment of obligations lacked the fairness, objectivity and transparency that should underpin the process. The Cook Islands noted several instances where the status of 'not assessed' was applied to CCPs when the obligations were not applicable to said CCP or where CCPs should have been rated as 'compliant' as in previous years. The Cook Islands pointed out that subjective opinions and inconsistent approaches create confusion and unnecessary work for CCPs, and that incorrect, incomplete or improper compliance assessments can have broad-ranging negative consequences for CCPs. The Cook Islands urged the Secretariat to refocus its efforts on establishing a

professional and streamlined process that reflects the work of CCPs to implement their obligations under the Agreement.

20. The Executive Secretary replied that the Secretariat takes the comments of the CCPs very seriously and has tried its best to monitor compliance with the new measures adopted and implemented during the MoP7. The Executive Secretary expressed the Secretariat's continued commitment to engaging in constructive discussions with CCPs and improving the compliance process and suggested that the addition of a compliance officer to the Secretariat could help make the process more efficient.
21. **The Compliance Committee adopted the provisional Compliance Report (pSCR) outlined in CC-05-18 Rev7 and agreed to forward it to the MoP for its consideration, noting there were two issues on which the Compliance Committee could not reach consensus.**
22. The provisional SIOFA Compliance Report (pSCR) report is outlined in Annex E.

Agenda item 4 – New or Amended Conservation and Management Measures (CMMs)

Agenda item 4.1 Proposals for amendments to Conservation and Management Measures

4.1.1. Revision of CMM 2019/02 on data standards

23. The Compliance Committee received proposals for amendments to CMM 2019/02 (Data Standards) in CC-05-08 and CC-05-14Rev1. CC-05-08 outlined amendments proposed by several CCPs during the sixth Scientific Committee meeting, including amendments for the consideration of pelagic longline fishing and handline fishing, improvements to the consistency and relevance of the CMM, and the updating of the information in a number of paragraphs. The changes are intended to enable more accurate scientific data to be collected and improve CCP compliance in regard to data submission. CC-05-14Rev1 outlined a proposal to include provisions for a protocol to document marine mammal interactions with long liner vessels operating in the SIOFA area, which the Scientific Committee has recommended for adoption (SC6 report, paragraph 112).
24. Japan was concerned about potential confusion which may stem from the duplication of governance of SIOFA and IOTC, not only for data reporting but also for all management issues, for example, where SIOFA species are caught as bycatch by tuna longliners authorised in IOTC. Japan thought the subject would be discussed under an arrangement between SIOFA and IOTC, however, the arrangement requires more time to be agreed. As an interim solution, Japan stated that one way to address the matter is to make a common understanding that SIOFA members confirmed that fishing vessels targeting tuna and tuna-like species in the area of competence of IOTC are governed by IOTC. Japan's statement was supported by several CCPs.
25. The Secretariat merged the two aforementioned papers and presented them as CC-05-08Rev1 for the consideration of the Compliance Committee. The Compliance Committee reviewed and further revised the proposed amendments. The Compliance Committee was unable to reach consensus on a number of points and left the relevant sections in square brackets for further consideration by the Meeting of the Parties. **The Compliance Committee agreed to forward the proposal outlined in CC-05-08Rev4 (Annex F) and to recommend that the Meeting of the Parties continues work on the proposal.**

4.1.2. Proposal to amend CMM 2020/15 management of demersal stocks

26. Australia and the European Union presented CC-05-09, a proposal to amend CMM 2020/15 (Management of Demersal Stocks). The proposed amendments aim to incorporate existing reporting templates that are currently available on the SIOFA website and the informal working arrangements and templates established during the 2020/21 toothfish fishing season, by Australia and the European Union with input from the Secretariat, to ensure that the Williams Ridge fishery could be implemented smoothly, in particular as regards the treatment of fishing notifications, while respecting the effort limitation agreed for that fishery. The incorporation of these arrangements and templates would render them obligatory, thereby enhancing legal certainty, and to enable them to be compliance assessed. In addition, references to '*D. eleginoides*' were replaced by '*Dissostichus spp.*' throughout the CMM, as recommended by the Scientific Committee (SC6 report, para 114). CCPs thanked Australia and the European Union for the proposed amendments. The Compliance Committee reviewed and further revised the proposed amendments. **The Compliance Committee agreed to forward the proposal outlined in CC-05-09Rev1 (Annex G) and to recommend it to the Meeting of the Parties for adoption.**

4.1.3. Proposal to amend para22 of CMM 2019/14 HSBI and inspection procedure

27. The Compliance Committee began discussions of CC-05-10 via correspondence. This proposal from France Territories intends to amend paragraph 22 of CMM 2019/14 (High Seas Boarding and Inspection (HSBI)) to refer to the questionnaire outlined in CC-05-11. CCPs had different views on the intended utility of the questionnaire. Some CCPs believed that the questionnaire is intended to facilitate communication between inspectors and crews who do not speak the same language and thus prevent reports of non-compliance arising from misunderstanding, and believed that inspectors should be required to only ask questions from the questionnaire. Other CCPs considered the questionnaire to be a tool for conducting HSBI and not a requirement, and pointed out that there are circumstances that would warrant inspectors asking questions that are not in the questionnaire, including to ensure the safety of inspectors and crew members. Based on the comments received from CCPs, France Territories presented CC-05-10Rev1 at the plenary. CCPs thanked France Territories for the proposed amendments. The Compliance Committee reviewed and further revised the proposed amendments. **The Compliance Committee agreed to forward the proposal outlined in CC-05-10Rev4 (Annex H) and to recommend that the Meeting of the Parties continues work on the proposal.**

4.1.4. Draft HSBI questionnaire (CMM 2019/14)

28. The Compliance Committee began discussions of CC-05-11, the draft HSBI questionnaire, which is required by paragraph 22 of CMM 2019/14 (HSBI) and was developed through an intersessional consultation led by France Territories, via correspondence. Based on the comments received from CCPs, France Territories presented CC-05-11Rev1 at the plenary. CCPs thanked France Territories for the proposed amendments. The Compliance Committee reviewed and further revised the proposed amendments. **The Compliance Committee agreed to forward the draft questionnaire outlined in CC-05-11Rev3 (Annex I) and to recommend it to the Meeting of the Parties for adoption.**

4.1.5. Revision of CMM 2020/08 on port inspections

29. China presented CC-05-12, which proposes amendments to CMM 2020/08 (Port Inspection), specifically to paragraph 6 in the preamble to reflect the current situation of SIOFA and to paragraph 1 in the main text to specify which vessels are to be inspected in port. The European Union thanked China for its proposal and noted that the proposed amendments to paragraph 6 in the preamble was not consistent with the language used in Article 12 of SIOFA Agreement, notably its paragraph 4. The European Union further noted that the proposed amendment of operative paragraph 1

(addition of ‘targeting SIOFA species’) was unnecessary if SIOFA retained, for the interpretation of the CMM, the definitions of fishing vessel, fishing and fishery resources established in Article 1 of the Agreement. The European Union also queried how the proposed amendment would address the issue of possible by-catches of SIOFA-managed species by tuna vessels operating under the IOTC. CCPs thanked China for the proposed amendments and following discussions, China revised its proposal, withdrawing the proposed amendments to paragraph 1. **The Compliance Committee agreed to forward the proposal outlined in CC-05-12Rev2 (Annex J) and to recommend it to the Meeting of the Parties for adoption.**

4.1.6. Protocol for documenting marine mammal interactions with longliner vessels

30. **The Compliance Committee reviewed and revised the protocol for documenting marine mammal interactions with longliner vessels under agenda item 4.1.1 as part of the review of the proposed amendments to CMM 2019/02. The Compliance Committee agreed to forward the proposal outlined in Annex E of CC-05-08Rev4 (Annex F) and to recommend it to the Meeting of the Parties for adoption.**

Agenda item 4.2 Proposals for new Conservation and Management Measures

4.2.1. EU proposal for a SIOFA VMS CMM

31. The European Union presented its proposal in CC-05-13Rev1 for a CMM for the establishment of a SIOFA Vessel Monitoring System (VMS), and explained that it had revised the proposal presented at last year’s meeting based on comments received intersessionally and during (as set out in the EU’s summary report in CC-05-INFO-06) correspondence process. Recognising the need for further technical discussions on certain aspects, the European Union proposed to follow a phased approach, focusing in a first phase on the adoption of a CMM setting out the VMS model that should be implemented by SIOFA and other key requirements, to be followed in a second phase by the development of detailed Standards, Specifications and Procedures (SSPs) for data formats and transmission, data confidentiality and security requirements, etc. The proposal also includes a roadmap for the development of a SIOFA VMS, with milestones for further technical work and the budgetary and staffing needs. CCPs thanked the European Union for the proposed amendments and raised a number of technical points that they requested be considered. The European Union noted that it needed more time to consider the comments from other CCPs and the limited time left during CC to progress the proposal. The EU expressed its intention to continue its work on the proposal at the upcoming Meeting of the Parties.
32. CCPs commented on the summary of technical and financial considerations for the implementation of a SIOFA VMS (CC-05-INFO-07) prepared by the Secretariat, pointing out that the paper lacked the necessary thoroughness and scope to be noted by the Compliance Committee, and highlighting the importance of considerations of cost-effectiveness and the VMS’s ability to ensure data confidentiality and security. The Executive Secretary explained that the paper was not intended to be presented as an exhaustive study but just as the Secretariat’s preliminary research for the sake of initiating discussions.

Agenda item 5 – Listing of IUU Vessels

Agenda item 5.1 Draft SIOFA IUU vessel List

33. The Compliance Committee considered the draft SIOFA IUU vessel list, which includes two vessels, the Mariam 1 (flag: Mauritius), and the El Shaddai (flag: South Africa), as outlined in CC-05-05.
34. In relation to the Mariam 1,
 - a. The Cook Islands noted that the Meeting of the Parties agreed to include this vessel on the draft IUU vessel list this year. The Cook Islands noted that Contracting Parties and Participating Fishing Entities are obliged to comply with the Agreement and CMMs. The Cook Islands further noted that the information supporting the presumption of IUU fishing has not changed. Therefore, inclusion on the provisional IUU vessel list is warranted.
35. **The Compliance Committee noted that the Mariam 1 is not on the SIOFA record of authorised vessels, that it has been reported in the SIOFA area, and that Mauritius confirmed it was fishing in the Saya de Malha Bank. The Compliance Committee agreed to include the Mariam 1 on the provisional IUU vessel list in CC-05-05 and submit the provisional IUU vessel list to the Meeting of the Parties and recommended that the Meeting of the Parties include the vessel on the provisional IUU vessel list on the new IUU vessel list.**
36. In relation to the El Shaddai,
 - a. A letter was received from South Africa explaining the circumstances surrounding the IUU activity of the El Shaddai and South Africa's response, and providing the vessel's VMS logs (CC-05-06). At the meeting, South Africa provided further updates on the actions taken by the South African authorities and requested that SIOFA not take further administrative action and not place the El Shaddai on SIOFA's IUU vessel list.
 - b. The European Union stated that it had analysed the VMS and catch data provided and calculated that the El Shaddai operated in the SIOFA area for 67 days and caught 66 tons of Patagonian toothfish, suggesting that this is not an isolated incident. The European Union pointed out that it is difficult to believe the vessel owner's claims that they were not aware the vessel was operating in the SIOFA area, and noted that, in any case, it is the responsibility of the vessel and flag State to know the rules of where the vessel is fishing. Furthermore, observers were on board and the VMS was functioning and transmitting information to the South African authorities, who should have been aware that the vessel was operating in the SIOFA area and taken appropriate action. The European Union questioned the relevance of South Africa's reference to the provisions of Article 76 of UNCLOS and referred South Africa to Article 77 of UNCLOS, particularly paragraph 4. The European Union noted that South Africa only issued a written warning in relation to the IUU fishing activities and did not consider that this constituted effective flag State action as required by CMM 2018/06. In view of the seriousness of the offence, the duration of the fishing operation and the amount and value of the catches made, as well as the lack of information about any internal measures taken by the South African authorities to prevent a recurrence, the European Union supported the inclusion of the El Shaddai in the provisional IUU vessel list.
 - c. France Territories expressed its support to the comments that were made by the European Union.

- d. Japan agreed with the European Union's interpretation of UNCLOS and its evaluation about the lack of diligence on the part of the fishing masters and the South African authorities to monitor the vessel properly. However, Japan considered that the EI Shaddai should not be listed in the provisional IUU vessel list, pointing out that in response to last year's discussions, South Africa has taken substantial actions through the application for CNCP status, committing to follow all SIOFA rules including the Agreement, CMMs and decisions.
 - e. Australia welcomed the application of South Africa for CNCP status but supported the inclusion of the EI Shaddai on the provisional IUU vessel list as the information provided meets the CMM criteria and indicates that the vessel has engaged in IUU fishing. Australia noted that South Africa has not taken effective action, which, in this case, would need to include sanctions of adequate severity against the boat, demonstrated ability to comply with SIOFA CMMs, and evidence that South Africa will prevent its vessels from fishing in the SIOFA area until it becomes a SIOFA CCP or CNCP.
 - f. The Cook Islands noted that the information provided by the company and the South African government indicates that the vessel operator was not aware that the fishing activity was occurring in the SIOFA area, but pointed out that the correspondence exchanged between the government and the operators appeared to give at least tacit acceptance to the proposed high seas fishing activity. The Cook Islands pointed out that it is incumbent on both industry and government to understand the rules applicable to where they are fishing, particularly in high seas areas managed under international arrangements. The Cook Islands noted the letter from the South African government states that it has never, and will never, authorise fishing in SIOFA's area not in compliance with its CMMs.
 - g. China noted the progress made by South Africa on this issue since the previous Compliance Committee meeting and expressed its satisfaction with the measures taken by the South African authorities. China noted that the EI Shaddai is authorised to fish in the CCAMLR area and is managed and controlled under CCAMLR's jurisdiction. Therefore, China did not support the inclusion of the vessel on the provisional IUU vessel list.
 - h. South Africa stated that, in consideration of the information provided by the CCPs, it would consider taking further strong administrative action against the EI Shaddai.
37. **The Compliance Committee noted that the EI Shaddai, a South African-flagged vessel, caught Patagonian toothfish in the SIOFA area while not included on the SIOFA record of authorised vessels, that since the 7th Meeting of the Parties, the South African authorities have contacted the Executive Secretary to apply to become a cooperating non-Contracting Party, and that the South African authorities have partially responded to the questions requested by CCPs and have transmitted the vessel's VMS logs.**
 38. **The Compliance Committee was unable to reach consensus to include the EI Shaddai on the provisional IUU vessel list.**
 39. **The Compliance Committee was unable to reach consensus to remove the vessel from the draft IUU vessel list. Accordingly, the EI Shaddai remained on the draft IUU vessel list for consideration by the Compliance Committee at its next meeting.**
 40. The provisional IUU vessel list is available in Annex K.

Agenda item 5.2 Current SIOFA IUU Vessel List and intersessional IUU vessels cross listing

41. **The Compliance Committee considered the current SIOFA IUU vessel list and did not make any recommendations to the Meeting of the Parties to remove any vessel from the current SIOFA IUU vessel list.**
42. The Executive Secretary suggested the need to distinguish between IUU vessels listed by SIOFA and those cross-listed from the IUU vessel lists of other RFMOs, explaining that not doing so has resulted in several instances of misunderstanding when sharing lists with other RFMOs.
43. The EU noted that paper CC-05-INFO-01 was presented for information, rather than for decision. The EU supported distinguishing between vessels that are directly added by SIOFA and vessels added by way of the cross-listing procedure. As regards the updating of information of vessels that were cross-listed from other organisations, the EU considered that these updates should only be done if initiated by the organisation that originally IUU-listed the vessel.
44. **The Compliance Committee agreed on the need to distinguish between IUU vessels listed by SIOFA and those cross-listed from the IUU vessel lists of other RFMOs. The Compliance Committee recommended that the Meeting of the Parties consider adding such information to the current SIOFA IUU Vessel List.**
45. China stated that it lacks the legal basis to take actions against those vessels on the IUU Vessel List by the RFMOs to which China is not a Member.
46. In response to China's statement the European Union pointed out that when China became a Contracting Party to the Agreement, it agreed to all CMMs that were adopted by SIOFA at the time, including CMM 06 (IUU Vessel List) and its cross-listing provisions, and therefore has an international obligation and a legal basis to comply with them. China thanked the EU for the clarification but stated that further legal advice is still needed from the Ministry of Foreign Affairs of China.

Agenda item 6 – Sightings of non-CCP-flagged vessels reported to the Secretariat

47. **The Compliance Committee noted that there were no non-CCP-flagged vessel sighting reports provided to the Secretariat since the 3rd Compliance Committee meeting (July 2019).**

Agenda item 7 – Port inspections reports (CMM 2020/08 Port Inspection)

48. **The Compliance Committee noted the port inspections summary, CC-05-INFO-04, which outlines 19 inspection reports from the European Union and 1 inspection report from Mauritius, covering the year 2020.**

Agenda item 8 – Entry/Exit and transshipment reports (CMM 2019/10 Monitoring)

49. Regarding its entry and exit notifications, Chinese Taipei explained via correspondence and also in the Compliance Committee that the notification of several

events by the same vessel in the same hour may be due to its use of an automatic notification system that notifies each actual crossing event, as well as the movement patterns of its fishing vessels, which cross the SIOFA boundary frequently during operations. Chinese Taipei noted the concerns expressed about the number of anomalies involving its vessels. It suggested that these may be due to technical satellite-connection issues, and expressed its commitment to further investigate the issues and work with the Secretariat to resolve them.

50. Thailand explained that, contrary to the information in CC-05-INFO-02Rev2, all notifications of entry or exit by Thai fishing vessels were made within 24 hours, and that it had provided the relevant fishing vessel records to the Secretariat. The Data Manager said that he would follow up on this matter with Thailand.
51. Several CCPs noted a number of anomalies in the entry/exit and transshipment reports that were not included in the dSCR, reminding the Secretariat that it was requested, at the previous Compliance Committee meeting, to update the dSCR with any anomalies or non-compliance issues in the information papers it has prepared. They also pointed out that the CCP to which any such anomaly or potential non-compliance issue pertains should be given the opportunity to comment on those issues before they are brought to the attention of other CCPs.
52. Chinese Taipei also pointed out that anomalies did not mean non-compliance as the obligation set forth in the CMM 2019/10 stated that fishing vessels were required to notify the Secretariat of each entry to or exit from the Agreement Area.
53. The Compliance Committee was unable to reach consensus to note the information papers CC-05-INFO-02Rev2 and CC-05-INFO-03Rev1 prepared by the Secretariat on the entry/exit and transshipment reports.

Agenda item 9 – Review of the status of Cooperating Non Contracting Parties (CNCP)

54. The Compliance Committee noted that Comoros submitted a statement confirming its commitment to achieve the objectives of the Agreement, comply with the CMMs and all other decisions and resolutions adopted pursuant to the Agreement, take appropriate measures to ensure that its fishing activities do not diminish the effectiveness of the CMMs and all other decisions adopted pursuant to the Agreement, and consult with the Meeting of the Parties to develop any other criteria for its admission in the capacity of a cooperating non-Contracting Party or cooperating non-participating fishing entity specific to its situation. **On that basis, the Compliance Committee recommended that the Meeting of the Parties determines that Comoros qualifies to retain its CNCP status.**
55. The statement from Comoros is available in Annex L.
56. The Compliance Committee noted that South Africa's application for CNCP status was received less than 60 days before the ordinary Meeting of the Parties. The Compliance Committee further noted that paragraph 2 of Rule 17 of the Rules of Procedure states that such requests 'should' be submitted at least 60 days before the ordinary Meeting of the Parties, that this is therefore not a strict requirement. On that basis, the Compliance Committee agreed to consider the application. Several CCPs pointed out that all applications for CNCP status should be brought to the attention of the Compliance Committee and the Meeting of the Parties, regardless of their potentially late nature.

57. Many CCPs supported South Africa's application, noting its commitment to abide by the Agreement and the SIOFA CMMs, and believing that it could contribute greatly to SIOFA as a CNCP. Other CCPs were unable to support the application, expressing concern about South Africa's willingness and ability to abide by the Agreement and CMMs and to take appropriate action to ensure its fishing activities do not diminish the effectiveness of the Agreement and CMMs, including in the case of the El Shaddai, and noting that South Africa had not yet submitted the written statement of commitments required under the Rules of Procedure.
58. **CCPs were unable to reach consensus on South Africa's application for CNCP status. The Compliance Committee invited South Africa to provide further details addressing the concerns raised by CCPs.**
59. South Africa stated that, in light of the short time between the current Compliance Committee meeting and the upcoming Meeting of the Parties, and the time required to complete internal procedures, it would resubmit its application to next year's Compliance Committee meeting.
60. The letter from South Africa requesting CNCP status is available in Annex M.

Agenda item 10 – Election of a future Chairperson and vice Chairperson

61. The Compliance Committee acknowledged the great efforts of the Chairperson in force, Mr Johnny Louys.
62. **The Compliance Committee agreed to elect Mr Johnny Louys for another two-year term.**
63. The Compliance Committee thanked Dr Chumnarn Pongsri for chairing the meeting in Mr Louys' absence.

Agenda item 11 – Adoption of the report

64. The report of the 5th meeting of the SIOFA Compliance Committee was adopted at 5:47 a.m. UTC, 5 July 2021.

Agenda item 12 – Close of meeting

65. The meeting was closed at 5:48 a.m. UTC, 5 July 2021.

ANNEX A: OPENING STATEMENT FROM THE CHAIR

Dear Heads of Delegation, and all participants to the 5th Compliance Committee of SIOFA.

Welcome to the 5th Compliance Committee of SIOFA.

I warmly welcome those who are participating for the first time as observers, as well as all delegates and participants to this compliance meeting. On behalf of the Commission, I extend a warm welcome to South Africa.

The year 2020 has been an exceptionally challenging year for the SIOFA and the Secretariat, as this year was heavily impacted by the COVID-19 pandemic.

Due to the Covid 19, unfortunately, our Compliance Committee Chairperson, Mr Johnny Louys, is in quarantine after testing positive for Covid and he will not be able to chair the 5th Compliance Committee. Exceptionally, at the request of the MoP, I will assume the role of Chairperson for the 5th Compliance Committee and wish a prompt recovering to Johnny.

So, the Compliance Committee must meet for the second time virtually.

The utilisation of the ZOOM platform has been useful, and it is a pleasure to see that everybody is using it now more easily.

Due to Covid 19, we have been forced to propose several intersessional decisions, including the derogation from the 100% observer coverage on trawlers.

I would like to thank all Contracting Parties who responded to these requests and remind you that the Secretariat needs to date, a quorum of at least 8 Contracting Parties for each decision.

Under Conservation and Management Measure 2020-11, the Secretariat has been working on updating a new compliance report template considering all the comments made at CC4. I trust that this updated template meets your expectations.

We have a busy agenda, in addition to the draft SIOFA Compliance Report and the update of the IUU vessel list, several working groups have achieved substantial work during the year in order to be able to propose improvements on the existing CMMs or to suggest new ones.

The Forums use and the handling of issues by correspondence have, I hope, enabled us to clarify the latter that need to be clarified and should result in a recommendation to the Meeting of the Parties. I will endeavour to guide you through this week. I am confident that I can rely on the delegations' consultations and decisions to ensure that SIOFA keeps working on the key issues. I wish you every success in your work at this 5th annual meeting of the Compliance Committee.

LIST OF CC5 PARTICIPANTS

Delegation	Title	Name	Function	Contact
MEETING CHAIRPERSON				
	Mr	Chumnarn Pongsri	MoP Chairperson	chumnarnp@gmail.com
SIOFA CCPs				
Australia	Mr	George Day	Head of delegation	george.day@awe.gov.au
Australia	Ms	Rebecca Sellers	Alternate	rebecca.sellers@awe.gov.au
Australia	Ms	Lauren Burke	Adviser	lauren.burke@awe.gov.au
Australia	Mr	Tristan Dewick	Adviser	tristan.dewick@awe.gov.au
Australia	Ms	Kerry Smith	Adviser	kerry.smith@afma.gov.au
Australia	Mr	Paul Rickard	Adviser	paul.rickard@afma.gov.au
Australia	Mr	Brodie Macdonald	Adviser	brodie.macdonald@afma.gov.au
Australia	Mr	Rhys Arangio	Expert	rarangio@australfisheries.com.au
Australia	Ms	Lyn Goldsworthy	Expert	lynda.goldsworthy@utas.edu.au
Australia	Ms	Sally Truong	Adviser	sally.truong@awe.gov.au
China	Mr	Haiwen Sun	Head of delegation	bofdwf@126.com
China		Yang Zhang	Alternate	zhang_yang3@mfa.gov.cn
China		Wenjuan Shen	Delegate	shen_wenjuan@mfa.gov.cn
China		Zhuang Yan	Delegate	ifengxiao@126.com
China		Rong Dong	Delegate	dong-rong@mfa.gov.cn
China		Ruojin Qiao	Delegate	bofdwf@126.com
China		Gang Zhao	Adviser	admin1@tuna.org.cn
China		Xuejian Chen	Adviser	admin1@tuna.org.cn
China		Mengjie Xiao	Adviser	admin1@tuna.org.cn
China		Chong Sun	Adviser	admin1@tuna.org.cn
China	Dr	Heng Zhang	Adviser	zhangh1@ecsf.ac.cn
China		Yongchuang Shi	Adviser	syc13052326091@163.com
China	Dr	Luoliang Xu	Adviser	llxu@shou.edu.cn
China	Dr	Libin Dai	Adviser	dailibin@163.com
Comoros	Mr	Mohamed Ali Mohamed	Alternate	rachadmohamedali@gmail.com
Comoros		Kamal Mohamed	Advisor	kalmohamed4@gmail.com
Cook Islands	Ms	Pamela Maru	Head of Delegation	p.maru@mmr.gov.ck
Cook Islands	Ms	Kerrie Robertson	Alternate	k.robertson@mmr.gov.ck
Cook Islands	Mr	Andrew Jones	Delegate	secfa@cookislands.gov.ck
Cook Islands	Mrs	Latishia Maui	Delegate	l.maui@mmr.gov.ck
European Union	Ms	Fiona Harford	Head of delegation	fiona.harford@ec.europa.eu

Delegation	Title	Name	Function	Contact
European Union	Mr	Ignacio Granell	Alternate	Ignacio.GRANELL@ec.europa.eu
European Union	Ms	Camille Servetto	Advisor	camille.servetto@outre-mer.gouv.fr
European Union	Mr	Guillaume Nardin	Advisor	guillaume.nardin@outre-mer.gouv.fr
European Union	Ms	Teresa Molina	Advisor	tmolina@mapa.es
European Union	Ms	Margarita Mancebo	Advisor	cmancebo@mapa.es
European Union	Mr	Jonathan Vila Grana	Advisor	jvila@pesqueravila.com
European Union	Mr	Edelmiro Ulloa Alonso	Advisor	edelmiro@arvi.org
France (OT)	Mr	Matthieu Piron	Head of Delegation	matthieu.piron@agriculture.gouv.fr
France (OT)	Mr	Lionel Gardes	Alternate	lionel.gardes@taaf.fr
Japan	Mr	Ichiro Nomura	Head of delegation	inomura75@gmail.com
Japan	Ms	Mako Iioka	Alternate	mako_iioka540@maff.go.jp
Japan	Mr	Yoichiro Kimura	Advisor	yoichiro_kimura680@maff.go.jp
Japan	Mr	Susumu Oikawa	Advisor	s-oikawa@maruha-nichiro.co.jp
Japan	Mr	Tomonori Sakino	Advisor	t-sakino@maruha-nichiro.co.jp
Japan	Mr	Yasuyuki Minagawa	Advisor	y-minagawa@maruha-nichiro.co.jp
Japan	Mr	Naohisa Miyagawa	Advisor	n-miyagawa@maruha-nichiro.co.jp
Japan	Mr	Shogo Ueki	Advisor	s-ueki@maruha-nichiro.co.jp
Japan	Mr	Toshiharu Muraoka	Advisor	t-muraoka@maruha-nichiro.co.jp
Japan	Mr	Sachio Hagiya	Advisor	s-hagiya@maruha-nichiro.co.jp
Japan	Mr	Fumiya Sato	Advisor	f-sato@maruha-nichiro.co.jp
Japan	Mr	Junichiro Okamoto	Advisor	jokamoto@jdsta.or.jp
Japan	Mr	Riki Kishimoto	Advisor	riki.kishimoto@mofa.go.jp
Japan	Mr	Hidefumi Yatomi	Advisor	yatomi@cubic-i.co.jp
Korea	Mr	Sungtaek Oh	Head of delegation	republicofkorea@korea.kr
Korea	Mr	Ilkang Na	Alternate	ikna@korea.kr
Korea	Dr	Kyum Joon Park	Advisor	mogas@korea.kr
Korea	Ms	Soomin Kim	Advisor	soominkim@kofci.org
Korea	Mr	Hojeong Jin	Advisor	jackiejin@kosfa.org
Korea	Mr	Seongju Cho	Advisor	csj@kosfa.org
Korea	Mr	Dongwhan Choe	Advisor	dhchoe@kosfa.org
Seychelles	Mr	Roy Clarisse	Head of delegation	rclarisse@gov.sc
Seychelles	Mr	Vincent Lucas	Alternate	vlucas@sfa.sc
Seychelles	Mr	Philippe Michaud	Advisor	philippe.michaud@statehouse.gov.sc
Seychelles	Ms	Sheriffa Morel	Advisor	sheriffamorel@gov.sc
Seychelles	Ms	Stephanie Radegonde	Advisor	sradegonde@gov.sc
Seychelles	Mr	Nichol Elizabeth	Advisor	ceo@sfa.sc
Seychelles	Mr	Yannick Roucou	Advisor	yroucou@sfa.sc
Chinese Taipei	Mr	Tien-Hsiang Tsai	Head of delegation	tehsiang@ms1.fg.gov.tw

Delegation	Title	Name	Function	Contact
Chinese Taipei	Mr	Michael Chen	Alternate	ykchen@mofa.gov.tw
Chinese Taipei	Mr	Charles Teng	Delegate	cjteng@mofa.gov.tw
Chinese Taipei	Ms	I-lu Lai	Delegate	ilu@ms1.fa.gov.tw
Chinese Taipei		Chia Chun Wu	Delegate	jiachun@ms1.fa.gov.tw
Chinese Taipei	Mr	Wei-Chen Hung	Delegate	weichen0506@ms1.fa.gov.tw
Chinese Taipei	Mr	Po-Yuan Huang	Delegate	brian7932646@gmail.com
Chinese Taipei	Ms	Huei-Wen Lin	Delegate	wonderful8r97@gmail.com
Chinese Taipei	Mr	Joseph Chia-chi Fu	Delegate	joseph@ofdc.org.tw
Chinese Taipei	Mr	Ren Fen Wu	Delegate	fan@ofdc.org.tw
Chinese Taipei	Ms	Chia-ti Li	Delegate	jodie@ofdc.org.tw
Chinese Taipei	Dr	Ching-Ping Lu	Delegate	michelleclpu@gmail.com
Chinese Taipei	Dr	Huang-chih Chiang	Advisor	hcchiang@ntu.edu.tw
Chinese Taipei	Mr	Yun-Hu Yeh	Advisor	yunhuyeh@gmail.com
Chinese Taipei	Mr	Tse Yung Hsu	Advisor	R08A21088@ntu.edu.tw
Chinese Taipei	Mr	Kuan-ting Lee	Advisor	simon@tuna.org.tw
Chinese Taipei	Ms	Hsiu-Wan Chen	Advisor	ann@tuna.org.tw
Chinese Taipei	Ms	Chiao-Lin Chan	Advisor	connie@tuna.org.tw
Chinese Taipei	Mr	Liang-Chun Wang	Advisor	duo_w@livemail.tw
Chinese Taipei	Mr	Chien-Yi Yan	Advisor	kenichifish@gmail.com
Thailand	Mr	Vicharn Insrisawang	Head of delegation	chobci.dof@gmail.com
Thailand	Mrs	Chuanpid Chantarawarathit	Alternate	chuanpidc@gmail.com
Thailand	Mr	Pavarot Noranarttragoon	Alternate	pavarotn@gmail.com
Thailand	Ms	Kanyarat Woraprayoth	Alternate	kookky0053@gmail.com
Thailand	Ms	Jariya Jiwapibantanakit	Alternate	jriyaya@hotmail.com
Thailand	Mr	Prasit Luesrithawornsin	Adviser	prasit_kim@hotmail.com
Thailand	Ms	Nootchaya Karnjanapradit	Adviser	phoenix_noon@hotmail.com
Thailand	Mr	Pornpanus Chidthid	Adviser	fptech.group@gmail.com
Thailand	Mr	Aekkarat Wongkeaw	Adviser	aekfish@hotmail.com
Thailand	Mr	Sarayoot Boonkumjad	Adviser	sboonkumjad@yahoo.com
Thailand	Ms	Sawitre Yawanopas	Adviser	sawitre_yawa@hotmail.com
Thailand	Ms	Supaporn Samosorn	Adviser	anongnang_59@hotmail.com
Thailand	Ms	Thanyalak Ratanadilok Na Phuket	Adviser	trthanya@gmail.com
Thailand	Ms	Jaruwan Songphatkaew	Adviser	conyakkee@gmail.com
Thailand	Ms	Tirabhorn Yothakong	Adviser	tirabhorn@gmail.com
Thailand	Ms	Doungpom Na Pombejra	Adviser	doungpombej@gmail.com

Delegation	Titl e	Name	Function	Contact
OBSERVERS				
EJF	Mr	Julien Daudu	Representative	julien.daudu@ejfoundation.org
FAO	Dr	Anthony Thompson	Consultant	anthony.thompson@fao.org
FAO	Dr	William Emerson	Project Coordinator	william.emerson@fao.org
SIODFA	Dr	Ross Shotton	Head of delegation	r_shotton@hotmail.com
SIODFA	Mr	Brian Flanagan	Alternate	brian@theflanagans.co.za
SIODFA	Mr	Charles Heaphy	Delegate	charles.heaphy@sealord.co.nz
SIODFA		Tim Silverstone	Delegate	tim.silverstone@sealord.co.nz
South Africa	Mr	Bernhard Liebemann	Head of Delegation	bliedemann@environment.gov.za
South Africa	Mr	Qayiso Mketsu	Alternate	qmketsu@environment.gov.za
SIOFA SECRETARIAT AND ASSISTANTS				
SIOFA	Mr	Johnny Louys	CC Chairperson	jlouys@sfa.sc
SIOFA	Mr	Thierry Clot	Executive Secretary	thierry.clot@taaf.fr
SIOFA	Mr	Pierre Périès	Data Manager	pierre.peries@siofa.org
SIOFA	Mr	Thibault Pivetta	Assistant	thibault.pivetta@siofa.org
SIOFA	Mr	Alex Meyer	Rapporteur	meyer@urbanconnections.jp
SIOFA	Mrs	Florence Bazin	Interpreter	bazinflorence@orange.fr
SIOFA	Mr	James Christie	Interpreter	james.christie.cit@gmail.com

CC5 Agenda

The Southern Indian Ocean Fisheries Agreement (SIOFA)

5th Meeting of the Compliance Committee

1-3 July 2021

Note: The Compliance Committee chairperson, Mr Johnny Louys, has been exceptionnally replaced by Dr Chumnarn Pongsri, chairperson of the Meeting of the Parties, to chair the Compliance Committee meeting.

The modalities of the items are specified in brackets: correspondence, videoconferences, or both

1. Opening of the session (Correspondence)

- 1.1 Opening statements
- 1.2 Admission of observers

2. Administrative arrangements (Correspondence)

- 2.1. Adoption of the agenda
- 2.2. Confirmation of meeting documents
- 2.3. Appointment of rapporteurs

3. SIOFA Compliance Monitoring Scheme (VC)

Standing agenda Item. In accordance with CMM 2020/11 Compliance Monitoring Scheme, the CC will shall consider the Draft SIOFA Compliance Report (dSCR) and adopt a Provisional Compliance Report (pSCR) which shall be forwarded to the Meeting of the Parties for consideration at its ordinary meeting.

4. New or Amended Conservation and Management Measures (CMMs) (Correspondence and VC)

Standing agenda item to allow the development of recommendations to the MoP on new or amended CMMs

- 4.1. Proposals for amendments to Conservation and Management Measures
 - 4.1.1. Revision of CMM 2019/02 on data standards
 - 4.1.2. Proposal to amend CMM 2020/15 management of demersal stocks
 - 4.1.3. Proposal to amend para22 of CMM 2019/14 HSBI and inspection procedure
 - 4.1.4. Draft HSBI questionnaire (CMM 2019/14)
 - 4.1.5. Revision of CMM 2020/08 on port inspections
 - 4.1.6. Protocol documenting interaction marine mammals/longline
- 4.2. Proposals for new Conservation and Management Measures
 - 4.2.1. EU proposal for a SIOFA VMS CMM

5. Listing of IUU Vessels (Correspondences and VC)

- 5.1. Draft SIOFA IUU List

Standing agenda item. In accordance with CMM 2018/06 paras 12 (a) and 13, the CC shall consider the draft SIOFA IUU Vessel List and adopt a provisional SIOFA IUU List for MoP consideration. In accordance with MoP7 report, paras 99 and 107, two vessels are already proposed by the MoP for the draft SIOFA IUU vessels list.

5.2. Current SIOFA IUU Vessel List and intersessional IUU vessels cross listing

Standing agenda item. In accordance with CMM 2018/06 paras 12 (b) and 14, the CC shall consider the current SIOFA IUU Vessel List and recommend to the MoP which, if any, vessels should be removed from the current IUU Vessel List. In accordance with paras 24 and 25 and following to the submission of other organization IUU lists, several updates of the SIOFA IUU vessels list have been done by intersessional decisions.

6. Sightings of vessels reported to the Secretariat (Correspondence)

Standing agenda item. Secretariat report on any sightings of vessels without nationality, operating in the Agreement Area communicated to the Secretariat by Contracting Parties, CNCPs and PFEs. Sightings and report provided in accordance with CMM 2016/04 (Article 5) on Vessels without Nationality

7. Port inspections reports (CMM 2020/08 Port Inspection) (Correspondence)

Status on inspection reports received at the Secretariat (paras 24 and 25)

8. Entry/Exit and transshipment reports (CMM 2019/10 Monitoring) (Correspondence)

Status on Area entry/exit reports (para 14) and transshipments log sheet (para 16) received at the Secretariat

9. Review of the status of Cooperating Non Contracting Parties (CNCP) (Correspondence and VC)

Standing agenda item. the Compliance Committee can provide technical/compliance advice to inform the MoP decision on renewing/granting CNCP status (In accordance with the rule 17-8 of the RoP).

10. Election of a future Chairperson and vice Chairperson (Correspondence and VC)

The current Chairperson's term ends at the close of the CC of 2021. If the current Chairperson is not renewed, the CCPs must consider the election of a new Chairperson. A vice Chairperson shall also be proposed by the CCP to assist the Compliance Committee Chairperson.

11. Adoption of the report (VC)

Review and adoption of the report.

12. Close of the meeting (VC)

Agenda Item	Related Papers
5.2. Current SIOFA IUU vessel list and intersessional cross-listing of IUU vessels	<p data-bbox="743 241 1310 309">CC-05-06 [restricted] Letter and data to SIOFA Secretariat ref El Shaddai + annex with VMS logs</p> <p data-bbox="743 383 1310 450">CC-05-INFO-01 Note IUU cross listing procedure Suggestions</p>
6. Sightings of vessels reported to the Secretariat	<i>no sighting reported to the Secretariat</i>
7. Port inspections reports	CC-05-INFO-04 rev2 Port Inspections
8. Entry/Exit and transshipments reports	<p data-bbox="743 613 1385 647">CC-05-INFO-02 rev2 Entry and exit notifications report</p> <p data-bbox="743 651 1342 714">CC-05-INFO-03 Transfers and transshipments report rev1</p>
9. Review of the status of Cooperating Non-Contracting Parties (CNCP)	CC-05-07 Comoros letter to SIOFA for 2021 CNCP status
10. Election of a future Chairperson and vice Chairperson	
11. Adoption of the Report	
12. Close of the Meeting	

Annex E

Provisional SIOFA Compliance Report

Provisional SIOFA Compliance Report

1. Compliance Assessment Period: 1st January to 31st December 2020**2. CMMs assessed in accordance with CMM2020-11:**

This year, in addition to the conformity assessment texts of Articles 10(2) and 11.3 of the Agreement, the following CMMS were assessed:

- CMM 2019/01 Interim Management of Bottom Fishing
- CMM 2019/02 Data standards
- CMM 2016/05 Pelagic Driftnets and Deepwater Gillnets
- CMM 2018/06 IUU Vessel list
- CMM 2019/07 Vessel Authorisation
- CMM 2017/08 Port Inspection
- CMM 2018/09 Control
- CMM 2019/10 Monitoring
- CMM 2018/11 Compliance Monitoring Scheme
- CMM 2019/12 Sharks
- CMM 2019/13 Mitigation of seabirds bycatch
- CMM 2019/14 High Sea Boarding and Inspection Procedures
- CMM 2019/15 Management of Demersal Stocks

3. Proposal to amend or improve existing CMMs

None identified by the Compliance Committee.

4. Priority obligations to be monitored and reviewed

None identified by the Compliance Committee.

5. Additional obligations to be included within the scope of the CMS:

Not discussed by the Compliance Committee

Table 1: Southern Indian Ocean Fisheries Agreement:

CCP	Obligation (Include paragraph number, CMM, summary description)	2019 compliance status	2020 compliance status proposed by CCP (+ comments, information, etc.)	Secretariat assessment (Compliant, information missing, possible compliance issues)	Additional information provided by CCP	2020 Compliance status proposed by CC	Follow up responsive or corrective action proposed by CCP	2020 compliance status adopted by MoP
MU	Article 10 (2) submission of a statement of implementing and compliance measures, including any imposition of sanctions for any violations NOTE: submission of CCP Compliance Report satisfies this requirement)	Critically Non-Compliant		Critically Non-Compliant		Critically Non-Compliant		
MU	Article 11 3. (c) submission of a report on fishing activities (this report is included within the annual National Report).	Critically Non-Compliant		Critically Non-Compliant		Critically Non-Compliant		

Table 2: CMM 2019/01 Interim Management of Bottom Fishing:

CCP	Obligation (Include paragraph number and summary description)	2019 compliance status	2020 compliance status proposed by CCP (+ comments, information, etc.)	Secretariat assessment (Compliant, information missing, possible compliance issues)	Additional information provided by CCP	2020 Compliance status proposed by CC	Follow up responsive or corrective action proposed by CCP	2020 compliance status adopted by MoP
THA	12: Application of VME encounter threshold levels in accordance with para 12	Compliant	Compliant	Non-Compliant VME bycatch is set at 300 Kg in the CMM noting that 700 Kg was set by DOF (above this limit).	(cf 2.1)	Compliant		
CN	20(a): submission of spatial extent of historic bottom fishing effort data to SC3 2018	Not Assessed (cf 2.2)	Not Assessed (cf. 2.2)	Not Assessed No bottom fishing detailed data is available		Not assessed		
JPN		Compliant	Compliant (cf. 2.3)	Non-Compliant	(cf. 2.3) Historical data already submitted to best resolution existing. Vessels were not required to record activity at the 20' resolution (but 30'). 20' resolution is not achievable.	Compliant		
KOR		Critically non-Compliant		Critically non-Compliant Spatial extent of historic bottom fishing has not been provided in 2020, however it has been provided in March 2021.		Non-Compliant		

CCP	Obligation (Include paragraph number and summary description)	2019 compliance status	2020 compliance status proposed by CCP (+ comments, information, etc.)	Secretariat assessment (Compliant, information missing, possible compliance issues)	Additional information provided by CCP	2020 Compliance status proposed by CC	Follow up responsive or corrective action proposed by CCP	2020 compliance status adopted by MoP
COM	33: CCPs shall only authorise vessels flying their flag to bottom fish in the Agreement Area in accordance with the provisions of the Agreement, this CMM and all other applicable CMMs, and shall ensure that such vessels do not engage in any activity which undermines the effectiveness of these measures		N/A	Non-Compliant It is applicable	All right. We will require the captain of the vessel to provide us with a certificate to the port that proves that their bottom fishing activities do not have an impact in the agreement area	Non-Compliant		
COM	34: All CCPs shall ensure that all vessels flying its flag that participate in bottom fishing in the Agreement Area are equipped and configured to comply with all relevant CMMs.		N/A	Non-Compliant It is applicable	All right. These are small boats of 6 meters with 4 people on board. It does not have enough space to install equipment	Non-Compliant		
COM	39(b): 20% scientific observer coverage on vessels using any other bottom fishing gear in any year		N/A	Non-Compliant It is applicable	It is impossible to take observers on board these small boats for safety reasons. We will see with the shipowner to put an observer on the mother vessel.	Non-Compliant		
COM	46(b): for all other gears ensure all vessels fishing in areas provided in Annex 2 always have a scientific observer onboard.	Non-Compliant	Compliant YES. One vessel. But only a dozen of the little stars who work at the hand line. Impossible to take an observer on board	Critically Non-Compliant No observers on board fishing vessels	We are considering putting an observer on the mother vessel because it is impossible to put an observer on the small 6-meter boats	Critically Non-Compliant		
MU	ALL except 22 & 44	Critically Non-Compliant		Critically Non-Compliant		Critically Non-Compliant		

(2.1) : The Secretariat recalls the MoP that the threshold for sponge VME bycatch is set at 300 Kg in the CMM noting that 700 Kg was set by DOF (above this limit).

“Thailand would like to clarify that we are in the internal process of revising the Notification of the Department of Fisheries on Requirement and Regulations of Overseas Fishing Vessels which are Operating in the Area under the Southern Indian Ocean Fisheries Agreement (SIOFA) B.E. 2562 (2019) since 2020 until now. However, the threshold levels for VME encounters for Thai vessels are enforced covered by Clause 21 of this Notification prescribed that “Wherewith rules and regulations of SIOFA will be updated information as determined by the Meeting of the Parties. The fishing vessel that requests to fishing in the SIOFA Agreement area shall comply with updating of rules and regulations of SIOFA all the time”. In case of the fishing vessels violate Clause 21 of this Notification, they will be offense pursuant to The Royal ordinance on Fisheries, Section 49 and will be legal punishment pursuant to Section 134. Moreover, Thai authorities have strictly trained the owner / master of Thai fishing vessels in practical on threshold levels for VME encounters before Thai vessels port out to operate in the SIOFA area, taking into account VME threshold more than 60 kg of live corals and/or 300 kg of sponges in any tow for trawl gears in accordance with SIOFA CMM 2020/01 that enforced in the current year”.

(2.2) : **China** was not a Contracting Party in 2018. “China had been engaging in demersal trawling from 2000 to 2002. As there were no specific requirements for fishing record at time, for example what specific items shall be recorded in the logbooks, the vessel operators recorded the catch in their own designed fishing logbooks for their own purposes. Besides in current SIOFA Area, the fishing company engaged in demersal trawling almost 20 years ago and at that time there were no domestic regulations or laws requiring Chinese fishing companies to store their fishing logbooks for a certain period. As the result the fishing logbooks have not been saved. Then SIOFA came into force in June 2012 and the first CMM for demersal stocks had been adopted in 2016. Therefore, it is really beyond China’s capacity to offer such more refined data as those tow-by-tow in terms of demersal trawling and only the total catch, main target species and total fishing hours were collected through the thorough efforts by both Chinese scientists and the fishing company and submitted to SIOFA in China’s national reports. Bottom longline fishing was also engaged by Chinese overseas fishing companies from 2004 to 2013. These vessels used to be included in the IOTC vessel list as the vessel may harvest tuna as bycatch. Only small amounts of SIOFA species were caught due to the limited knowledge and

technology on demersal species by the fisherman, and even mistake in identification or accounting maybe as results as indicated in China's national reports. As such, besides the same reason as that for demersal trawling, detailed data for SIOFA species by bottom longlining are not specifically recorded by those fishing vessels. China has no bottom longline fishing vessels since 2014."

(2.3) : First, **Japan** mentioned in its 2020 assessment: "The FAJ submitted the spatial extent of historic bottom fishing effort expressed as grid blocks of at least 20 minutes resolution for the bottom longline (1'x1'), but not for trawl (30'x30')."

After the assessment made by the Secretariat, **Japan** mentioned: "The status should be 'Not Assessed'. Before 2017, Japan did not require its vessels to collect their fishing-position data in a format finer than 1°x1° grid blocks for bottom long lines and 30'x30' grid blocks for trawl. Therefore, submitting such historical data was impossible. Compliance status of data submission for any given year should be assessed in the next year. Since this paragraph requires members to submit its data on historical bottom fishing effort to the 2018 SC meeting, the appropriate venue for the compliance assessment was CC3 (2019). The compliance assessment for such a particular past year should not be repeated. Otherwise, Japan would have to being assessed as 'Non-Compliant' forever. Since 2019, Japan has required its vessels to collect data as required by CMM 2019/02."

Table 3: CMM 2019/02 Data standards:

CCP	Obligation (Include paragraph number and summary description)	2019 compliance status	2020 compliance status proposed by CCP (+ comments, information, etc.)	Secretariat assessment (Compliant, information missing, possible compliance issues)	Additional information provided by CCP	2020 Compliance status proposed by CC	Follow up responsive or corrective action proposed by CCP	2020 compliance status adopted by MoP
THA	4: data collected in accordance with the relevant sections of Annex A.	Compliant	Compliant	Not assessed There is a technical impediment for THA hand line fisheries to match Annex A requirements as the CMM did not provide sections relevant to hand line fishing. It is being corrected by CMM revision due in 2021.		Not assessed (CMM to be reviewed)		
COM	6: submission of vessel catch and effort data to Secretariat by 31 May.	Critically Non-Compliant	Compliant	Critically Non-Compliant No gear information (no effort metrics), daily data aggregation provided.	Details on this information are on the 2019 annual catch report. The SIOFA Secretariat has raised concerns about the format used. We have taken and are in the process of improving.	Critically Non-Compliant		
JPN		Compliant	Compliant	Not Assessed Species discarded must be identified (FAO species/group code/Scientific name) if possible in live weight. Repeated usage of Other as species code does not give information on the species composition or species groups caught.	The status should be 'Compliant'. Japan's understanding is that identification of species of discarded catch is not mandatory, as the requirement in the relevant CMM (Annex A of CMM 2019/02) is qualified by 'if possible'.	Compliant		
CT		Compliant	Compliant	Not Assessed (Cf. 3.1)	(Cf. 3.1)	Compliant		
COM	8: implement on-board all fishing vessels flying your flag the FAO Identification guide to the deep-sea cartilaginous fishes of the Indian Ocean	Non-Compliant	Non-Compliant We have informed the owner to do so	Critically Non-Compliant	We have constraints with the shipowner always uses a logbook issued by the Mauritian authorities	Critically Non-Compliant		
COM	10: submission of historical catch, effort, observer data for	Critically Non-Compliant	Compliant	Critically Non-Compliant No historical catch and effort data was provided by	Existing catch data 2000-2017 are not usable. Logbooks are not usable.	Critically Non-Compliant		

CCP	Obligation (Include paragraph number and summary description)	2019 compliance status	2020 compliance status proposed by CCP (+ comments, information, etc.)	Secretariat assessment (Compliant, information missing, possible compliance issues)	Additional information provided by CCP	2020 Compliance status proposed by CC	Follow up responsive or corrective action proposed by CCP	2020 compliance status adopted by MoP
	period 2000-2015 by 31 Jan 2018.			Comoros (period 2000-2017)				
CKI		Compliant	Compliant	Not Assessed Historical observer's data (2000-2015) have not been provided. What is available and planned to be done?	The Cook Islands are undertaking a review of possible historical data and will provide relevant data in due course	Compliant		
KOR		Non-Compliant	Yes, Korea submitted its historical catch and effort data of higher resolution (10 mins) than CMM recommended for the period 2000-2015 (actual fishing period of Korea is 2009-2013)	Non-Compliant Catch and effort data have not been provided in 2020, However it has been provided in March 2021		Non-Compliant		
SYC		Not Compliant	Not Applicable	Not Assessed Seychelles to investigate if historical data is existing for past fishing activities relevant to SIOFA.	Seychelles does not have historical fishing activities in the SIOFA area	Compliant		
CN	10: for new CCPs joining after October 2016 submission of historical catch, effort, observer data for period 2000-2015 within 12 months after joining	Compliant	Compliant	Not Assessed (<i>cf.</i> 3.2)	To our understanding, this "stock assessments" shall refer to benthical stock assessments as it is defined by "bottom" and there is no other description on it. As such the CMM shall not be applied to pelagic fishing.	Compliant (only bottom fishing species being stock assessed)		
COM	14: submission of an annual observer programme implementation report included in National Report		N/A	Compliant		Compliant		
COM	15: submissions of Scientific Observer Data by 31 May.	Critically Non-Compliant	N/A	Critically Non-Compliant No observer data have been provided	No observation data collected One mother vessel with many smaller boats around. It is not possible to board one observer on each small boat.	Critically Non-Compliant		
JPN		Compliant	Compliant	Not Assessed 2019 observer data do not give any information on benthos bycatch and interaction with seabird or mammals. Even if such events never occurred, it must be provided with a 0 in the datasets	The status should be 'Compliant'. Japan submitted the revised observer data on 25 May 2021 which included figures of '0'.	Compliant		
COM	18 c.: submission of annual data verification report included in National Report		Compliant	Non-Compliant No data verification report is presented in National Report	We have constraints on the methodology used	Non-compliant		

CCP	Obligation (Include paragraph number and summary description)	2019 compliance status	2020 compliance status proposed by CCP (+ comments, information, etc.)	Secretariat assessment (Compliant, information missing, possible compliance issues)	Additional information provided by CCP	2020 Compliance status proposed by CC	Follow up responsive or corrective action proposed by CCP	2020 compliance status adopted by MoP
COM	19-20: data reported in accordance with the formats described in CMM 2018'02, including its annexes		Compliant	Non applicable CMM 2019/02 do not specifically address hand line fishing		Not assessed (CMM review)		
CKI	20- Specifications for the submission of data:	Non applicable	Non applicable			Compliant		
MU	ALL: 4-8 9 (b)(c) 10 12 14-15 18 (a) (b) (c) 19-20	Critically Non-Compliant		Critically Non-Compliant		Critically Non-Compliant		

(3.1) The Secretariat, after the Assessment informed Chinese Taipei that The Secretariat notes that no species details are provided for sharks (SKX code used) and other pelagic fish (PEL code used) in 2019 data submission. All catches are recorded under these group codes which does not provide specific information. CCPs are to provide species information at the lowest taxon level possible.”

Chinese Taipei then, stated “To our understanding, obligation set forth para. 6 is to “submit 2019 vessel catch and effort data including all information in accordance with Annex A to the Secretariat by 31 May 2020. “ We did submit the said data to the Secretariat by 31 May 2020.

In addition, according to Annex A of CMM 2019/02, it is acceptable to submit group code such as SKX or PEL, in the field of “Species retained”.

As a result, we think our compliance status here should be “Compliant”.

(3.2) China **declared** "To assist with the development of a bottom fishing footprint and stock assessments, CCPs shall provide to the Secretariat, by 31 January 2018 historical catch, effort.../...." This concerns all stocks and not only those related to the bottom fishing footprint. Historical data that has been provided is only summary data (yearly catch).

Historical catch and effort data submission must comply as much as possible with Annex A of CMM 2019/02: haul by haul catch and effort, gear details, etc. According to China National Report, better data can still be provided for light seine activity from 2014 to 2017.

Table 4: CMM 2016/05 Pelagic Driftnets and Deepwater Gillnets:

CCP	Obligation (Include paragraph number and summary)	2019 compliance status	2020 compliance status proposed by CCP (+ comments, information, etc.)	Secretariat assessment (Compliant, information missing, possible compliance issues)	Additional information provided by CCP	2020 Compliance status proposed by CC	Follow up responsive or corrective action proposed by CCP	2020 compliance status adopted by MoP
MU	1-implementation of measures prohibiting the use of all large-scale pelagic driftnets more than 2.5km in the Agreement Area by national	Critically Non-Compliant		Critically Non-Compliant		Critically Non-Compliant		

	vessel							
MU	2- implementation of measures to prevent the use of deep-water gillnets by national vessel	Critically Non-Compliant		Critically Non-Compliant		Critically Non-Compliant		

Table 5: CMM 2018/06 IUU Vessel List:

CCP	Obligation (Include paragraph number and summary description)	2019 compliance status	2020 compliance status proposed by CCP (+ comments, information, etc.)	Secretariat assessment (Compliant, information missing, possible compliance issues)	Additional information provided by CCP	2020 Compliance status proposed by CC	Follow up responsive or corrective action proposed by CCP	2020 compliance status adopted by MoP
SYC	19 - Contracting Parties, CNCPs and PFEs shall take all necessary measures under their applicable legislation and pursuant to paragraphs 56 and 66 of the IPOA-IUU	Not applicable	not applicable	Compliant The measures referred in para 19 a-j must be implemented by all CCPs regardless of flag fishing activities.		Compliant		
JPN	30 Without prejudice to the primacy of the responsibility of the flag State, each Contracting Party, CNCP and PFE shall take appropriate measures, subject to, and in accordance with, their applicable laws and regulations	Compliant	Compliant	Not Applicable		Compliant		
JPN	31 should designate a contact point through which information on reported activities described in sub- paragraphs 30 (a) and (b) can be exchanged	Compliant	Compliant	Not Applicable		Compliant		
MU	ALL	Critically Non-Compliant		Critically Non-Compliant		Critically Non-Compliant		

Table 6: CMM 2019/07 Vessel Authorisation :

CCP	Obligation (Include paragraph number and summary description)	2019 compliance status	2020 compliance status proposed by CCP (+ comments, information, etc.)	Secretariat assessment (Compliant, information missing, possible compliance issues)	Additional information provided by CCP	2020 Compliance status proposed by CC	Follow up responsive or corrective action proposed by CCP	2020 compliance status adopted by MoP
MU	2, all states or fishing entities that was a CCP before 18 Oct 2016 - electronically to the submission Secretariat a list of vessels authorised to operate in the agreement area in accordance with all requirements listed in paragraph 2(a)-(s)	Critically Non-Compliant		Critically Non-Compliant (<i>Cf. 6.1</i>)		Critically Non-Compliant		
MU	3	Critically Non-Compliant		Critically Non-Compliant (<i>Cf. 6.2</i>)		Critically Non-Compliant		

CCP	Obligation (Include paragraph number and summary description)	2019 compliance status	2020 compliance status proposed by CCP (+ comments, information, etc.)	Secretariat assessment (Compliant, information missing, possible compliance issues)	Additional information provided by CCP	2020 Compliance status proposed by CC	Follow up responsive or corrective action proposed by CCP	2020 compliance status adopted by MoP
MU	ALL	Critically Non-Compliant		Critically Non-Compliant		Critically Non-Compliant		

(6.1): Secretariat: "Mauritius has sent in 2017 an initial list of authorized vessel, but some item were missing (i-e: photos)"

(6.2): "Mariam 1 was fishing in the area but has not been registered on the authorised vessels list.

Table 7: CMM 2020/08 Port Inspection Scheme:

CCP	Obligation (Include paragraph number, and summary description)	2019 compliance status	2020 compliance status proposed by CCP (+ comments, information, etc.)	Secretariat assessment (Compliant, information missing, possible compliance issues)	Additional information provided by CCP	2020 Compliance status proposed by CC	Follow up responsive or corrective action proposed by CCP	2020 compliance status adopted by MoP
SYC	2 notified the Secretariat of designated ports to which foreign vessels may request (8)	Compliant	Compliant		Port Victoria is the only designated Port to which foreign flagged vessels may request entry in accordance with the requirements of Para 2 of this CMM.	Compliant		
COM	17 port inspectors duly authorised, trained and familiar with the Agreement and all of its relevant CMMs		NO. Comoros has not yet ratified the PSM convention (Port stat measure)	Not assessed	Comoros has no fishing port, therefore do not make any port inspections.	Compliant		
MU	22 Contracting Parties, CNCPs and PFEs shall undertake inspections of all fishing vessels carrying or landing <i>Dissostichus spp.</i> Which enter their ports.	Critically Non-Compliant		Not Assessed One inspection has been reported in 2020 (1 st October 2020)		Compliant		
MU	24 The inspections reports include all information required in Annex IV and have been forwarded to competent authority and Executive Secretary	Critically Non-Compliant		Not Assessed One inspection of an EU F/V took place on 11 May 2020. The report was never provided to EU and was provided on 1st October 2020 to the Secretariat (over 30 days).		Critically non compliant		
MU	All except 19-21	Critically Non-Compliant		Critically Non-Compliant		Critically Non-Compliant		

Table 8 : CMM 2018/09 Control of fishing activities

CCP	Obligation (Include paragraph number and summary description)	2019 compliance status	2020 compliance status proposed by CCP (+ comments, information, etc.)	Secretariat assessment (Compliant, information missing, possible compliance issues)	Additional information provided by CCP	2020 Compliance status proposed by CC	Follow up responsive or corrective action proposed by CCP	2020 compliance status adopted by MoP
COM	2 designated the competent authority or authorities which shall act as the Contact Point and provide contacts to the Secretariat	Critically Non-Compliant	Compliant	Critically Non-Compliant No contact points provided in 2020	We have notified the SIOFA secretariat by e-mail two authorities	Non-compliant		
MU	All	Critically Non-Compliant		Critically Non-Compliant		Critically Non-Compliant		

Table 9: CMM 2019/10 Monitoring of fisheries

CCP	Obligation (Include paragraph number and summary description)	2019 compliance status	2020 compliance status proposed by CCP (+ comments, information, etc.)	Secretariat assessment (Compliant, information missing, possible compliance issues)	Additional information provided by CCP	2020 Compliance status proposed by CC	Follow up responsive or corrective action proposed by CCP	2020 compliance status adopted by MoP
CT	15: Arrangements and measures implemented to ensure that all CCP vessels included in the SIOFA Record of Authorised Vessels only undertake transshipments at sea of fishery resources with other vessels included on the SIOFA Record of Authorised Vessels.	Non-Compliant	Critically Non-Compliant (cf. 7.1)	Critically Non-Compliant	(cf. 7.1)	[Critically] Non-Compliant No consensus was reach	no further action	
CT	16: All CCP vessels included in the SIOFA Record of Authorised Vessels must undertake at sea transshipment operations in accordance with the obligations listed in paragraph 16 (a)-(h)	Non-Compliant	Critically Non-Compliant (cf. 7.2)	Critically Non-Compliant	(cf. 7.2)	No consensus was reach [Critically] Non-Compliant	Transshipment operations are monitored under other rules	
MU	ALL : 1-6 8 (a)-(c) 9-12 14-16 19-26	Critically Non-Compliant		Critically Non-Compliant		Critically Non-Compliant		

(7.1) Chinese Taipei:

We have monitored the transshipment operations conducted by our fishing vessels by following the CCSBT CMMs, the IOTC Regional Observer Programme, and the fishing vessel must obtain prior approval from this Agency before the transshipment operation. Following the Non-compliance status given after evaluating our compliance status relating to 2019, we have held outreach activities that we remind the operators of the fishing vessels included on the SIOFA Record of Authorized Vessels shall only conduct at-sea transshipment with those vessels included on the Record of Authorized Vessels as of Jan 1, 2021. We expect that we will be Compliant in this regard when examining our compliance from 2021 onwards.

(7.2) Chinese Taipei:

With regard to paragraph 16 (a) to (d), according to our domestic law and regulations, operators are required to submit a transshipment plan and apply to this Agency 15 days before the at-sea transshipment for approval; besides, they should also submit a transshipment notification to this Agency for approval 3 days before the estimated time for transshipment. However, we did not submit the information

to the Secretariat in 2020 as required in the CMM. We will submit it to the Secretariat in 2021 and we expect that we will be Compliant next year.

As for paragraph 16 (e) to (h), when our longline fishing vessels operating in the Indian Ocean conduct at-sea trasshipment with carrier vessels, there will be IOTC ROP observers onboard the carrier vessels. The observers will submit the report to the IOTC Secretariat, and the IOTC Secretariat will then distribute them to the flag States concerned, which means it would take us longer than 15 days to submit observer reports to the Secretariat; therefore, it hinders our ability of submitting the documents required to the Secretariat. Therefore, we seek for the harmonization between IOTC and SIOFA on this measure.

Table 10 : CMM 2018/11 Compliance Monitoring Scheme :

CCP	Obligation (include paragraph number and summary description)	2019 compliance status	2020 compliance status proposed by CCP (+ comments, information, etc.)	Secretariat assessment (Compliant, information missing, possible compliance issues)	Additional information provided by CCP	2020 Compliance status proposed by CC	Follow up responsive or corrective action proposed by CCP	2020 compliance status adopted by MoP
MU	12 completion of a CCP Compliance Report in full accordance with paragraph 12 and submitted to the Secretariat no later than 60 days before the commencement of the next ordinary Meeting of the Parties	Critically Non-Compliant		Critically Non-Compliant		Critically Non-Compliant		

Table 11: CMM 2019/12 Sharks :

CCP	Obligation (Include paragraph number and summary description)	2019 compliance status	2020 compliance status proposed by CCP (+ comments, information, etc.)	Secretariat assessment (Compliant, information missing, possible compliance issues)	Additional information provided by CCP	2020 Compliance status proposed by CC	Follow up responsive or corrective action proposed by CCP	2020 compliance status adopted by MoP
EU	2- CCPs shall ensure that fishing vessels flying their flag do not target any deep-sea shark species listed in Annex 1 within the Agreement Area, until the Scientific Committee defines and the Meeting of the Parties agrees on possible appropriate fishing mortality and harvest levels for any of these species.	Compliant	Compliant	Not Assessed The EU National Report provided at SC6 reports 590 tons of deep-water sharks catch in 2020 (>50% total catch). The Secretariat cannot assess whether it is targeted (Non-Compliant) or bycatch (Compliant).	(cf.11.1)	Compliant	SC to examine the measure, the catch levels, and move-on rules. EU to provide further info on move-on rules applied	
MU	All: 2 3-3. CCPs shall ensure that fishing vessels flying their flag record and submit all reporting requirements as per CMM 2019/02 (Data Standards) for all deep-sea sharks to the lowest taxonomical level possible when caught in SIOFA fisheries.	Critically Non-Compliant		Critically Non-Compliant		Critically Non-Compliant		

(11.1): The EU stated: The observer work methodology considers “target species” according to the catch composition of each tow. According to this methodology, the main catches for tows 60 to 100 in the EU vessel’s trip of 28/05 to 27/09/2020 were deep-water sharks. However, these catches were not targeted and should therefore be considered bycatch.

The vessel’s fishing licence prohibits it from targeting sharks. Instead, the vessel targeted other species, as authorised by its fishing license, notably *Mora moro*/RIB, *Beryx spp*/ALF, *Polyprion spp*/WRF-WHA and *Pseudopentaceros richardsoni*/EDR. Since the entry into force of CMM 2019/12, catches of *Polyprion americanus* have increased from almost 0 to 140 t. The vessel has also been operating in areas 2, 3a, 3b, 4 and 7 whereas in previous years it operated only

in areas 2, 3ba and 7).

The EU further notes that CMM 2019/12 does not establish criteria to determine what percentage of catches would constitute bycatch. In the absence of such criteria, the EU required the vessel to apply the following move-on rules to mitigate deep-water shark bycatches, as stipulated in its fishing licence:

- a) The first time that the total weight of the deep-water shark catches accounts for the highest percentage in weight of the total catch, the vessel must immediately move at least 3 nm from any position in the previous haul. In this case, it shall be treated as a by-catch and the consideration of infringement for directed fishing shall not be applied.
- b) If the same circumstance occurs in the second haul, the vessel must move at least 10 nm and not return for at least 60 hours. In this case, it shall also be treated as a by-catch.
- c) Upon return to the starting point after at least 60 hours have elapsed, the vessel must make a test haul for a maximum of 3 hours. If the total weight of deep-water shark catches accounts for the highest percentage in weight of the total catch, it shall not be considered as directed fishing, but the vessel must change its position as provided in a) and b). Any species caught must be identified and indicated on the catch form. The application of the move-on rules has been successful, as catches of deep-water sharks have decreased considerably.

In view of the above, the compliance status should be 'Compliant'.

Table 12: CMM 2019/13 Mitigation of seabirds bycatch

CCP	Obligation (Include paragraph number and summary description)	2019 compliance status	2020 compliance status proposed by CCP (+ comments, information, etc.)	Secretariat assessment (Compliant, information missing, possible compliance issues)	Additional information provided by CCP	2020 Compliance status proposed by CC	Follow up responsive or corrective action proposed by CCP	2020 compliance status adopted by MoP
MU	2: CCPs shall require any demersal longliners and other demersal fishing gears flying their flag and operating in this area to apply the following mitigation measures:	Critically Non-Compliant		Critically Non-Compliant		Critically Non-Compliant		
MU	3(a): any vessel catching a total of three (3) seabirds in a single season shall immediately change to night setting only (i.e. setting only during the hours of darkness between the times of nautical twilight);	Critically Non-Compliant		Critically Non-Compliant		Critically Non-Compliant		
MU	3 (c) (-h): c. at least one bird scaring line (in accordance with Annex 1) shall be deployed when setting longlines and at least one bird exclusion device (BED, in accordance with Annex 2) shall be used to prevent birds entering the hauling area, to the extent allowed by prevailing weather; d. there shall be no discharging of offal or discards immediately prior to and during the deployment or retrieval of fishing gear; e. fishing vessels using autoline systems shall add weights to the hookline or use integrated weight (IW) hooklines while deploying longlines. IW longlines of a minimum of 50 g/m or attachment to non-IW longlines of 5 kg weights at 50 to 60 m intervals are recommended; f. fishing vessels using the Spanish method of longline fishing shall release weights before line tension occurs; traditional weights (made of rocks or concrete) of at least 8.5 kg mass shall be used, spaced at intervals of no more than 40 m, or traditional weights of at least 6 kg mass shall be used, spaced at intervals of no more than 20 m, or solid steel weights of at least 5 kg mass shall be used, spaced at intervals of no more than 40 m; g. fishing vessels using the trotline system exclusively (not a mix of trotlines and the Spanish system within the same longline) shall deploy weights only at the distal end of the droppers in	Critically Non-Compliant		Critically Non-Compliant		Critically Non-Compliant		

	the trotline. Weights shall be traditional weights of at least 6 kg or solid steel weights of at least 5 kg; and h. fishing vessels alternating between the use of the Spanish system and trotline method shall use: (i) for the Spanish system: line weighting shall conform to the provisions in paragraph 3 f; (ii) for the trotline method: line weighting shall be either 8.5 kg traditional weights or 5 kg steel weights attached on the hook-end of all droppers in the trotline at no more than 80 m intervals.							
MU	4- For demersal longliners of less than 25 m, at least one measure in the para 4(a-c) shall apply	Critically Non-Compliant		Critically Non-Compliant		Critically Non-Compliant		
MU	5 - CCPs shall require any fishing vessel flying their flag and operating in the Agreement Area using demersal pots or traps to ensure the cleanliness of the traps and pots not to attract birds, and ensure that buoy lines shall not be left floating at the surface.	Critically Non-Compliant		Critically Non-Compliant		Critically Non-Compliant		

Table 13: CMM 2019/14 High Sea Boarding and Inspection Procedures

CCP	Obligation (include paragraph number and summary description)	2019 compliance status	2020 compliance status proposed by CCP (+ comments, information, etc.)	Secretariat assessment (Compliant, information missing, possible compliance issues)	Additional information provided by CCP	2020 Compliance status proposed by CC	Follow up responsive or corrective action proposed by CCP	2020 compliance status adopted by MoP
MU	ALL: 5,7-10;12;13;15;18;24;25;27;29;31;33-39;44-48	Critically Non-Compliant		Critically Non-Compliant		Critically Non-Compliant		

Table 14: CMM 2019/15 Management of Demersal Stocks

CCP	OBLIGATION (Include paragraph number and summary description)	2019 compliance status	2020 compliance status proposed by CCP (+ comments, information, etc.)	Secretariat assessment (Compliant, information missing, possible compliance issues)	Additional information provided by CCP	2020 Compliance status proposed by CC	Follow up responsive or corrective action proposed by CCP	2020 compliance status adopted by MoP
EU	27 - CCPs shall require their flagged vessels to tag and release <i>Dissostichus</i> spp specimens at a rate of at least 5 fish per tonne green weight caught. A minimum overlap statistic of at least 60% shall apply for tag release, once 30 or more <i>Dissostichus</i> spp specimens have been caught.	Compliant	Non Compliant (no further action needed) <i>(Cf 14.1)</i>	Non-Compliant	<i>(Cf 14.1)</i>	Non compliant	No further action	
AUS	35-36 35: Toothfish shall be tagged and released at a rate of at least 5 fish per tonne green weight caught. A minimum overlap statistic of at least 60% shall apply for tag release, once 30 or more toothfish	Compliant	Non Compliant <i>(Cf. 14.2)</i>	Non-Compliant According to AUS' comments, it seems to be a technical impediment to comply with the measure: too few catches and fish in conditions that are not good enough to be able to meet the CMM tagging		Non compliant	No further action required	

CCP	OBLIGATION (Include paragraph number and summary description)	2019 compliance status	2020 compliance status proposed by CCP (+ comments, information, etc.)	Secretariat assessment (Compliant, information missing, possible compliance issues)	Additional information provided by CCP	2020 Compliance status proposed by CC	Follow up responsive or corrective action proposed by CCP	2020 compliance status adopted by MoP
	have been caught. 36- Representative data and samples of length, weight, sex, maturity stage, gonad weight and otoliths shall be collected to contribute to the work of the 5th meeting of the Scientific Committee, and in particular to contribute to assessing the risk to localised depletion			requirement (overlap statistic).				
EU		Non-Compliant	Non-Compliant (no further action needed) <i>(Cf. 14.3)</i>	Non-Compliant	<i>(Cf. 14.3)</i>	Non compliant	No further action	
MU	All: 12 17 & 38 18-20 25-27 35-36 39 40 40b (2020) 41 (2019) 42 (2020) 43 (2019) 43 (2020) 44 (2019) 46 (2020) 47 (2019) 47 (2020) 48 (2019)	Critically Non-Compliant		Critically Non-Compliant		Critically Non-Compliant		

(14.1): For 2020, European Union mentioned for its assessment: During the EU vessel’s first fishing trip in 2020, which started in November 2019, no toothfish specimens were tagged and released in the Del Cano Rise area due to a misunderstanding between the vessel owner and the scientific observer about who would provide the tags. The EU notes that CMM 15 does not specify who is responsible for providing the tags or what type of tags should be used. The issue has been resolved with the vessel owner providing CCAMLR tags.

European Union made the additional remark: The EU proposes a status of ‘Non-Compliant, no further action needed’ for this incident, noting that would be consistent with the compliance status assigned by CC4 for a similar incident in the Williams Ridge fishery for the part of the same fishing trip that took place in 2019.

(14.2) Australia mentioned A total of 49 Toothfish were tagged and released, at a rate of 5.44 tags per tonne and tag overlap of 53.81%. The overall catch was small which makes it more difficult to meet the required overlap rate than where there is a larger sample size. This is because fish should only be tagged where they are in good condition and have a high likelihood of survival. The fewer fish there are to choose from for the purposes of tagging the greater the likelihood of variation from the target overlap rate.:

(14.3) European Union mentioned that “During the EU vessel’s first fishing trip in 2020, which started in November 2019, no toothfish specimens were tagged and released in the Williams Ridge area due to a misunderstanding between the vessel owner and the scientific observer about who would provide the tags. Although the EU accepted a ‘Non-Compliant’ status for the same issue in the 2020 compliance assessment exercise (relating to the part of the trip that fell in 2019), we note that CMM 15 does not specify who is responsible for providing the tags or what type of tags should be used. The issue has been resolved since then with the vessel owner providing CCAMLR tags.”

European Union after Secretariat assessment added that “The EU notes that this not a new instance of ‘Non-compliance’ seeing as it concerns the same fishing trip that which was the subject of a finding of ‘Non-Compliant’ at CC4 (the trip started in 2019 and continued into 2020). Taking into account the nature of the incident and the remedial action taken since then, the EU suggests that the most appropriate compliance status for this type of situation would be ‘Non-Compliant, no further action needed’.”

CMM 2019/02¹**Conservation and Management Measure for the Collection, Reporting, Verification and Exchange of Data relating to fishing activities in the Agreement Area (Data Standards)****The Meeting of the Parties to the Southern Indian Ocean Fisheries Agreement;**

RECALLING that Article 6(1) (f) of the *Southern Indian Ocean Fisheries Agreement* (the Agreement) calls on the Meeting of the Parties to develop rules for the collection and verification of scientific and statistical data, as well as for the submission, publication, dissemination and use of such data;

FURTHER RECALLING that Articles 10(1)(c) and 11(3) set out the duties relevant to the collection and provision of data and related processes for Contracting Parties and flag States **CCPs** respectively;

RECOGNISING the importance of developing comprehensive arrangements for data collection, reporting, verification and exchange of data to assist the Scientific Committee in performing its functions as outlined in Article 7 of the Agreement;

NOTING the relevance of Articles 10(e) and 14 of the *Agreement for the Implementation of the Provisions of the United Nations Convention on the Law of the Sea of 10 December 1982 relating to the Conservation and Management of Straddling Fish Stocks and Highly Migratory Fish Stocks* (UNFSA) which call on States to cooperate through regional fisheries management organisations to agree on the standards for the collection, reporting, verification and exchange of data on fisheries for the stocks, and the specifications and format for the data to be provided and to cooperate in their scientific research;

CONSIDERING the provisions set forth in the *Resolution on data collection concerning the high seas in the Southern Indian Ocean*, adopted by the Conference on the Southern Indian Ocean Fisheries Agreement in the Seychelles from 13-16 July 2004;

NOTING the importance of data collection and catch reporting for the purposes of ensuring scientific stock assessment and implementing an ecosystem approach to fisheries management;

NOTING the recommendation by the Third meeting of the Scientific Committee to improve the collection of sharks catch information and the submission of scientific observer data; and

FURTHER NOTING that the Meeting of Parties has adopted policies and procedures for the maintenance of data confidentiality (CMM 2016/03);

ADOPTS the following conservation and management measure (CMM) in accordance with Article 6 of the Agreement:

Application

1. This CMM applies to all Contracting Parties, cooperating non-Contracting Parties and

¹ CMM 2019/02 (Data Standards) supersedes CMM 2018/02 (Data Standards)

participating fishing entities (CCPs).

2. This CMM prescribes the standards for the collection, reporting, verification and exchange of data related to fishing activities by vessels fishing in the SIOFA Area of Application (the Agreement Area) that are flying the flag of a CCP.

These data standards shall assist the Meeting of the Parties to fulfil its objectives under the Agreement insofar as it relates to assessing the state of the fisheries within SIOFA's competence, including the status of target and non-target species and the impact of fishing on the marine environment.

Terminology

3. The following definitions apply to this CMM including its annexes:
- a. 'other species of concern' means those species as may be defined by the Scientific Committee from time to time.
 - b. 'National Report' means the report defined in paragraph-9 of this CMM.

~~[Vessel Catch and Effort Data²] (footnote: For CCPs that also have tuna longliners under the management and administration IOTC, it is also acceptable to continue to report the related bycatch data to IOTC.)~~

Formatted: Strikethrough

Collection of data

4. CCPs shall ensure that data on fishing activities, including for target, non-target and associated and dependent species such as marine mammals, marine reptiles, seabirds or 'other species of concern', are collected from vessels flying their flag that are fishing in the Agreement Area in accordance with the relevant sections of Annex A.
5. ~~The Scientific Committee shall, by no later than the ordinary meeting of the Scientific Committee in 2019, provide advice and recommendations to the Meeting of the Parties on an appropriate spatial resolution for the collection and reporting of data to facilitate effective stock assessment. Until the Meeting of the Parties, based on the advice of the Scientific Committee, determines an appropriate spatial resolution for the collection and reporting of data, CCPs shall ensure that data are collected on a haul-by-haul basis. CCPs shall collect and report vessel catch and effort data on a haul-by-haul basis in accordance with the specifications in Annex A.~~

Formatted: Strikethrough

Formatted: Strikethrough

Data collection and submission

6. CCPs shall report to the Secretariat, by 31 May each year, the data collected under paragraphs 4 and 5 for the previous calendar year, in accordance with the format prescribed in the corresponding annexes.
7. CCPs shall provide to the Secretariat, by 31 May each year, annual catch summaries for all species/groups caught in the Agreement Area during the previous calendar year. The catch summaries shall include the following information:
- a. Calendar year (eg 2015)
 - b. FAO statistical area (eg FAO87)
 - c. Species/group name (common name and scientific name)
 - d. Species/group code (FAO3-alpha code 19, EG ORY) (if available)

Formatted: English (United Kingdom)

- e. Annual catch total - tonnes raised to 'live' weight.
8. To assist in data collection CCPs shall implement on-board all fishing vessels flying their flag the FAO Identification guide to the deep-sea cartilaginous fishes of the Indian Ocean³. Where available the use of Smartforms may be considered.

National report

9. Following the entry into force of this CMM, CCPs shall provide to the Scientific Committee, at least 30 days prior to the commencement of each ordinary meeting, an annual National Report of their fishing, research and management activities in accordance with the following:
- a. For the first report: the National Report shall include details of activities of the previous five calendar years;
 - b. For all reports thereafter: the National Report shall include details of activities of the previous calendar year; and
 - c. In either case, the National Report shall take into account the guidelines prepared by the Scientific Committee for the preparation of such reports.

Historical Data

~~10. To assist with the development of a bottom fishing footprint and stock assessments, CCPs shall provide to the Secretariat, by 31 January 2018 historical catch, effort and, if available, observer data from vessels flying their flag that were fishing in the Agreement Area at any time during the period 2000 to 2015, and any previous years where available, in a format as close as is possible to the annexes to this CMM. The catch, effort and, if available, observer data provided to the Secretariat may initially be provided as unverified data, and updated with verified data any time before 31 January 2019.~~

~~To assist with the development of a bottom fishing footprint and stock assessment, each CCP shall endeavor to provide the Secretariat with all historical catch and effort, and if available observer data for vessel flying their flag and fishing in the Agreement Area at any time during period 2000-2015 and any previous years where available, and, if possible, all available data collected by scientific observer from vessels flying their flags in accordance with annex A and annex B to the extent applicable.~~

~~10-11.~~ Any State or fishing entity that becomes a Party to the Agreement, a CNCP or PFE after the date this CMM is adopted shall provide their historical data to the Secretariat within 12 months of becoming Party to the Agreement, or becoming a CNCP or PFE.

~~11-12.~~ Where possible, CCPs are encouraged to provide relevant, reliable historical data for species caught in waters under their national jurisdiction where such information would assist in understanding the status of the stocks and the impacts of fishing on all target species, non-target and associated and dependent species and the marine environment within the Agreement Area.

Scientific Observer Data

~~12-13.~~ All CCPs shall implement national scientific observer programmes to collect from

³ Ebert, D.A. and Mostarda, E. 2013. Identification guide to the deep-sea cartilaginous fishes of the Indian Ocean, FishFinder Programme, FAO, Rome. 76 p

Formatted: Strikethrough

Formatted: Strikethrough

Formatted: Strikethrough

activities undertaken by vessels flying their flag:

- a. Vessel information, effort and catch data for its fishing activities in the Agreement Area, including target, non-target and associated and dependent species including marine mammals, marine reptiles, seabirds or 'other species of concern';
- b. Biological or other data and information relevant to the management of fishery resources in the Agreement Area, as specified in this CMM, or as identified from time to time by the Scientific Committee or through processes identified by the Meeting of the Parties; and
- c. Relevant scientific information related to the implementation of the provisions of the CMMs adopted by the Meeting of the Parties.

~~13-14.~~ The function and tasks of the scientific observer are described in Annex D.

~~14-15.~~ CCPs shall, through their National Report, provide to the Scientific Committee an annual ~~observer programme~~ implementation report which ~~should~~ ~~should~~ ~~shall~~ ~~should~~ include ~~summary~~ sections covering: observer training, ~~programme~~ design and coverage, type of data collected, and any problems encountered during the previous calendar year.

~~15-16.~~ CCPs shall, for all observed trips, collect observer data in accordance with the relevant sections of Annex B. All observer data collected by CCPs shall be reported to the Secretariat by 31 May each year for the previous calendar year. ~~Annex B will be reviewed by the Scientific Committee at its ordinary meeting in 2020 based on observer data provided.~~

~~16-17.~~ By 2023, the Scientific Committee shall develop and adopt a template for the observer reports, and a template for an observer data collection form that may be used by observers in subsequent years.

~~17-18.~~ By 2023, the Meeting of the Parties, based on recommendations from the Scientific Committee and the Compliance Committee shall adopt a SIOFA framework for scientific observation clarifying all the aspects related to the role.

Data Verification

~~18-19.~~ CCPs shall:

- a. ensure that fishery data are verified through an appropriate system of data verification mechanisms;
- b. develop, implement and improve data verification mechanisms, which may include:
 - i. Position verification through vessel monitoring systems;
 - ii. Independent monitoring, including scientific observer programs and approved electronic observer programs,⁴ to verify industry data on catch, effort, catch composition (target and non-target), discards and other details of fishing operations;
 - iii. Vessel trip, landing and transshipment reports; and
 - iv. Port sampling.
- c. provide to the Scientific Committee, through their National Report, an annual data verification report which should provide information regarding their development and implementation of data verification mechanisms.

⁴ Approved electronic observer programs refers to those programs that meet the SIOFA agreed standard and have been reviewed by the Scientific Committee and approved by the Meeting of the Parties as being capable of meeting the data requirements in this CMM.

Commented [P1]: We suggest to use that each CCP should provide a specific document describing in detail observer program. FROT already proposed a description of his observer program SC-04-INFO-07 based on the list of criteria developed under the CCAMLR observer training program accreditation scheme (COTPAS).

Formatted: Strikethrough

Format for data submission

~~49-20.~~ CCPs shall report all data required to be reported by this measure to the Secretariat in accordance with the formats described in this CMM, including its annexes.

~~20-21.~~ Specifications for the submission of data:

- a. times, ~~latitudinal~~ /longitudinal/~~latitudinal~~ information and units of measure are to be reported in accordance with the format described in Annex C;
- b. Species are to be described using the FAO 3 letter Species Codes;⁵
- c. Fishing methods are to be described using the International Standard Classification of Fishing Gear (ISSCFG - 29 July 1980) codes;⁶ and
- d. Types of fishing vessels are to be described using the International Standard Classification of Fishery Vessels (ISSCFV) codes.⁷

Review

~~24-22.~~ This CMM should be reviewed periodically by the Scientific Committee and the Meeting of the Parties, taking into account new information or data requirements as may be decided.

⁵ www.fao.org/fi/statist/fisoft/asfis/asfis.asp

⁶ <http://www.fao.org/fishery/cwp/handbook/M>

⁷ <http://www.fao.org/fishery/cwp/handbook/L>

**Standards for the Collection, Reporting, Verification and Exchange of Data
Annexes**

List of Annexes:

Annex A - Vessel Catch and Effort Data

Annex B - Observer Data

Annex C - Specifications for the Exchange of Data

Annex D - Function and tasks of the scientific observer

[Annex E - Protocol for documenting whale interaction in deep-sea demersal longline fisheries](#)

Vessel Catch and Effort Data

1. Contracting Parties, CNCPs and PFEs shall ensure that the following data on fishing activities are collected ~~from all fishing vessels flying their flag~~ in the Agreement Area:

For all demersal fishing vessels flying their flag:

<p>Data Set - Fishing activities General (Trip)</p> <p>Vessel flag State CCP (ISO 3-apha)</p> <p>Name of vessel</p> <p>International radio call sign (if any)</p> <p>Vessel Registration number (flag State CCP)</p> <p>Lloyd's / IMO / IHS Fairplay Number (if allocated)</p> <p>Vessel size: Gross Tonnage (Gross register tonnage may be used if GT is not available, or both)</p> <p>Name of person filling in the data</p>	
<p>Weight Conversion Factor</p> <p>Species</p> <p>Processing type</p> <p>Conversion factor = live weight/processed weight</p>	
<p>Haul Information</p> <p>Intended Target species (FAO code)</p> <p>Type of fishing (C)ommercial; (R)esearch; (S)urvey data</p> <p>Haul ID number</p>	
<p>Set Start date and Time (Based on Coordinated Universal Time (UTC))</p> <p>Recorded at start and end of fishing</p> <p>For longline vessels - record at start and end of setting, in addition to start and end of haul</p> <p>Date format (YYYY.MON.DD)</p> <p>Time format (hh.mm)</p> <p>Decimal degrees (WGS84 are to be used to describe locations)</p>	
<p>Position at start and end of fishing</p> <p>Latitude</p> <p>Longitude</p> <p>Use N and S rather than + and - Use E and W rather than + and -</p> <p>For longline vessels: - position is recorded at the start and end of setting</p> <p>For bottom trawl Trawl fishing: - for bottom trawl "start" is defined as when the groundrope first touch is on the bottom, and "end" is when the ground rope leaves the bottom at the beginning of hauling the tow ends.</p> <p>[For -for midwater trawl "start" is defined as when the fishing gear is at target fishing depth, "end" is when the tow haul begins ends. If it is not possible to record, collect numbers that the gear touches the sea bottom accidentally in each set]</p> <p><u>For handline fishing, record the position of the vessels at the start and at the end of the fishing operation</u></p>	
<p>Bottom Depth (m)</p> <p>As recorded at the start and end of fishing</p>	
<p>Fishing / gear depth (m)</p> <p>As recorded at the start and end of fishing</p> <p>For trapping/potting, Actual Fishing / gear depth (m) as recorded at start is required</p>	

Commented [PS2]: CHN: replace State by CCP

Formatted: Highlight

Formatted: Highlight

Commented [PS3]: CHN: replace State by CCP

Formatted: Highlight

Formatted: Highlight

Formatted: Highlight

Formatted: Highlight

Formatted: Strikethrough, Highlight

Commented [PS4]: JAPAN: For the mid water & aimed trawls, it is technically difficult to record start & end positions. Thus, we propose to add this sentence. Japan to propose better wording.

Formatted: Strikethrough, Highlight

<p>Species retained Estimated catch retained on board by <u>species-taxa</u> (FAO species/group code/scientific name) in <u>live-green</u> weight⁸ (kg)</p>
<p>Species Discarded An estimation of the amount of living marine resources-discarded by <u>species-taxa</u> if possible in <u>live-green</u> weight (kg) <u>(excluding benthos bycatch and incidental by-catch of marine mammal, seabirds, reptiles and other 'species of concern')</u></p>
<p><u>/Specimen cut off</u> Yes / No <u>For each species caught</u></p> <ul style="list-style-type: none"> • <u>Taxa name (if possible)</u> • <u>Number alive</u> • <u>Number dead or injured</u>
<p><u>/Incidental bycatch of marine mammals, seabirds, reptiles and 'other species of concern'</u> Yes / No For each species caught</p> <ul style="list-style-type: none"> • <u>Species-Taxa name</u> • <u>Number alive</u> • <u>Number dead or injured</u>
<p><u>/Benthos bycatch (if possible and if not collected by the observers and if possible)</u> Yes/No <u>For each benthic organisms' species</u></p> <ul style="list-style-type: none"> • <u>Taxa scientific names (identified if possible)</u> • <u>FAO code (if possible)</u> • <u>Estimation of the amount caught</u>
<p><u>For all pelagic fishing vessels targeting SIOFA species <u>flying their flag</u></u></p>
<p><u>Data Set - Fishing activities General (Trip)</u> <u>[Vessel flag <u>CCP</u>/<u>State</u> (ISO 3-apha)]</u> <u>Name of vessel</u> <u>International radio call sign (if any)</u> <u>Vessel Registration number (flag <u>State</u><u>CCP</u>)</u> <u>Lloyd's / IMO /IHS Fairplay Number (if allocated)</u> <u>Vessel size: Gross Tonnage (Gross register tonnage may be used if GT is not available, or both) Name of person filling in the data</u></p>
<p><u>Weight Conversion Factor</u> <u>Species</u> <u>Processing type</u> <u>Conversion factor = live weight/processed weight</u></p>
<p><u>Haul Information</u> <u>Intended Target species (FAO code)</u> <u>Type of fishing (C)ommerical: (R)esearch: (S)urvey data Haul ID number</u> <u>Set Start date and Time (Based on Coordinated Universal Time (UTC))</u> <u>Recorded at start of fishing</u></p>

Commented [P5]: SC-06-16 need a specific list. Experts disagree on the taxonomy of certain species including *Macrourus* species (*holotrachys*, *carinatus*, *ccamlr*, *whitsoni*). For those species with an overlap of identification criteria it's very difficult to identify at sea with certainty

Commented [PS6]: For Annex B, observer data

Formatted: Strikethrough
Formatted: Strikethrough
Formatted: Strikethrough

Commented [PS7]: JAPAN: Crews cannot collect such scientific info (both incidental bycatch and benthos bycatch). This is the appropriate task for the trained scientific OBS. So, these two items are shifted to the OBS data fields.

Commented [PS8R7]: Japan will fulfill incidental bycatch and benthos bycatch information under the observer data (annex B)

Commented [PS9]: The duplication of the table below is a strong preference from Chinese Taipei

Commented [PS10]: CHN: replace State by CCP

Formatted: Font: Bold, Strikethrough

Commented [PS11]: CHN: replace State by CCP

Formatted: Strikethrough

⁸ Green weight means fresh and unprocessed weight.

<p><u>Date format (YYYY.MON.DD)</u></p> <p><u>Time format (hh.mm)</u></p> <p><u>Decimal degrees (WGS84 are to be used to describe locations)</u></p> <p><u>Position at start of fishing</u></p> <p><u>Latitude</u></p> <p><u>Longitude</u></p> <p style="text-align: center;"><u>Use N and S rather than + and - Use E and W rather than + and -</u></p>
<p><u>Species retained</u></p> <p><u>Estimated catch retained on board by taxa (FAO species/group code/scientific name) in live weight (kg)</u></p>
<p><u>Species Discarded</u></p> <p><u>An estimation of the amount of living marine resources discarded by taxa if possible in live weight (kg)</u></p>
<p><u>Incidental bycatch of marine mammals, seabirds, reptiles and 'other species of concern'</u></p> <p><u>Yes / No</u></p> <p><u>For each species caught</u></p> <ul style="list-style-type: none"> • <u>Species name</u> • <u>Number alive</u> • <u>Number dead or injured</u>

Commented [PS12]: To be resolved by MoP

- Contracting Parties, CNCPs and PFEs shall ensure that the following gear-specific data on fishing activities, as applicable, are collected from all fishing vessels flying their flag in the Agreement Area.

Data Set - Gear
<p>Trawl <u>Cod end mesh Size (mm)</u> Trawl technique: Type of trawl: (S)ingle, (D)ouble or (T)ripple</p>
<p>Demersal Longline Type of longline (Spanish, Trotline, Autoline) <u>Total length (m)</u> Type of bait Hook size (mm) Hook spacing (m) Hook code or make Length of line (m) Number of hooks set Number hooks per cluster (if Trotline) Number of hooks lost (attached to lost sections of line)</p>
<p><u>Pelagic Longline (targeting SIOFA species) (provisional)</u></p> <p><u>Total length (m)</u> <u>Total number of hooks in the set</u> <u>Number of hooks between floats</u> <u>Number of light-stick used in the set</u> <u>Type of bait used in the set</u> <u>Sea surface temperature at noon</u> <u>(Length of floating line)</u> <u>(Length of branch line)</u> <u>(Distance between branch lines)</u></p>
<p>Trap/Pot Pot type Type of line: Dropline or longline Length of line (m) Pot spacing (m) Number of pots set Number of pots lost Type of bait</p>
<p>Dahn/Drop Line/ Handline Total number of hooks in the set <u>Total number of line lifts in the set</u></p> <p>Number of hooks lost Hook code or make Type of leader used <u>Total number of line lifts in the set</u> Type of bait used</p>

Commented [P13]: Request to the MoP if it's relevant for the prerogatives of SIOFA, IOTC or joint.

Commented [PS14]: JAPAN: As agreed yesterday, this is subject to the decision by IOTC & SIOFA in the near future. We understand that, meanwhile, we will discuss data items to collect. However, Japan also conducts tuna LL, and we need to discuss data items internally. So, decisions on data items in this time should be provisional. If oil-fish is decided to be handled by SIOFA, then we need to re-visit the data items to finalize.

Commented [PS15]: Inclusion of pelagic longline is subject to species agreed by the IOTC-SIOFA cooperative arrangement.

Handline

Number of fishermen involved

Number of line lifts per fisherman

Number of hooks per line

Observer Data

1. Contracting Parties, CNCPs and PFEs shall, for all observed trips, collect and provide to the Secretariat the data contained in this Annex in accordance with the format set out below.
2. Contracting Parties, CNCPs and PFEs shall, where appropriate, ensure that observers are briefed and provided with documented length-frequency and biological sampling protocols and the specific priorities for the trip for the sampling activities documented below.
3. Contracting Parties, CNCPs and PFEs shall endeavor to collect tissue, otolith and/or stomach samples in accordance with any research programs developed by the Scientific Committee.

Data Set - Observer data
<p>Trip Details</p> <p>Trip Number Cruise details (start and end dates - YYYY.MON.DD) Date report is generated (UTC) Current vessel flag State-CCP (ISO 3-apha) Name of vessel</p>
<p>Observer Details</p> <p>Observer name and ID Nationality (ISO 3-apha) Employing organisation Contact name in organisation (Address/email/fax) Boarding location (UNLOCODE, if applicable or Latitude/Longitude) Boarding Date (UTC:YYYY.MON.DD) Disembarkation location (UNLOCODE, if applicable or Latitude/Longitude) Disembarkation date (UTC:YYYY.MON.DD) Time Zone (UTC +/-)</p>
<p>Length Frequency Data</p> <p>Representative and randomly sampled length-frequency data shall be collected for the target species (FAO species code)</p> <p>Optional: Representative and randomly sampled length-frequency data shall be collected for other main by-catch species.</p> <p>Length data shall be collected and recorded at the most precise level appropriate for the species (cm or mm and whether to the nearest unit or unit below) and the type of measurement used (total length, fork length, or standard length) shall also be recorded.</p> <p>Where possible, total weight of length-frequency samples should be recorded, or estimated and the method of estimation recorded</p>

Commented [PS16]: CHN: replace State by CCP

<p>Where possible, Observers should determine and record sex of measured fish to generate length-frequency data stratified by sex</p> <p>Where possible, representative and randomly sampled length-frequency data should shall be collected for other main by-catch species</p>	<p>Formatted: Strikethrough</p> <p>Commented [P17]: Here need to define what constitutes 'main' bycatch species</p>
<p>Biological Sampling</p> <p>Species</p> <p>Length (mm or cm) and ,with record of the type of length measurement used.</p> <p>Skates and rays:</p> <ul style="list-style-type: none"> maximum <u>Maximum</u> disk width shall be measured <p>Sharks</p> <ul style="list-style-type: none"> Appropriate length measurement to be used should be selected for each species. As a default, total length should be measured. <p>Weight (kg)</p> <p>Sex (male, female, immature (optional), unsexed (optional))</p> <p>Maturity stage (optional) and criteria/schedule used (optional)</p> <p>Gonad weight (g) (optional)</p> <p>Otoliths</p>	<p>Commented [P18]: SC-06-16: The measurements of fish with a tag (column « tags collected ») would be a duplicate of that noted in the "Tags" sheet. Further details are requested. We propose to only fulfill the "Tags" sheet to avoid these duplicates</p>
<p>Incidental bycatch of seabirds, mammals, turtles or 'other species of concern'</p> <p>The following data shall be collected for all seabirds, mammals, turtles and other species of concern caught in fishing operations <u>as much as possible</u>:</p> <ul style="list-style-type: none"> Species (identified taxonomically as far as possible, or accompanied by photographs if identification is difficult) and size Estimated species abundance around fishing vessel Species interactions with fishing gear Count of the number of each species caught per tow or set Fate of bycatch animal(s) (retained or released/discarded) If released, life status (vigorous, alive, lethargic, injured, dead) upon release If injured, what was the cause of injury? If dead, then collect information or samples for onshore identification in accordance with pre-determined sampling protocols. Where this is not possible, observers may be required to collect sub-samples of identifying parts, as specified in biological sampling protocols <ul style="list-style-type: none"> Record the type of interaction (hook/line entanglement/warp strike/net capture/other) if other, describe Sex of each individual for taxa where this is feasible from external observation, e.g. pinnipeds, small cetaceans or Elasmobranchii species identify any circumstances or actions that may have contributed to the bycatch event? (E.g. tori line tangle, high levels of bait loss) 	<p>Commented [PS19]: JAPAN: Bycatch data are requested to collect by both logbook and observer data. We propose to collect this information EITHER logbook or OBS data. Japan will collect by the OBS data.</p>
<p>Tag releases</p> <p><u>The following data shall be reported for all tagged fish, seabird, mammal or reptile</u></p> <p><u>Tag type, wording and colour</u></p> <p><u>Tag number</u></p> <p><u>Date and time of tagging</u></p> <p><u>Species</u></p>	<p>Commented [PS20]: To follow up, retaining original words</p>

Animal length
Type of length
Animal sex (F=female, M=male, I=indeterminate, D=not examined)

Position (Lat/Lon) of release
Animal status at release (injured/uninjured)

Tag Recoveries
 The following data shall be collected for all recovered fish, seabird, mammal or reptile tags if the organism is dead, to be retained, or alive:

- Name of observer
- Name of vessel
- International radio call sign (if any)
- Vessel flag State CCP (ISO 3-apha)
- Collect, label (with all details below) and store the actual tags for later return to the tagging agency
- Species from which tag recovered
- Tag colour.
- Tag wording and
 - type of tag (spaghetti, archival)
 - Tag numbers
 - Date and time of capture (UTC)
 - Location of capture (Lat/Lon, to the nearest 1 minute)
 - Animal length / size (cm or mm) with description of what measurement was taken (such as total length, fork length, etc)
 - Sex (F=female, M=male, I=indeterminate, D=not examined)
 - Whether the tags were found during a period of fishing that was being observed (Y/N)

Hierarchies for Observer Data collection

Fishing Operation Information
 All vessel and tow / set / effort information.

Reporting of Catches
 Record time, weight of catch sampled versus total catch or effort (e.g. number of hooks), and total numbers of each species caught
 Identification and counts of seabirds, mammals, reptiles (e.g. turtles), sensitive benthic species and vulnerable species
 Record numbers or weights of each species retained or discarded Record instances of depredation, where appropriate

Biological Sampling
 Check for presence of tags
 Length-frequency data for Target species (FAO species code)
 Basic biological data (sex, maturity) for Target species (FAO species code)
 Length-frequency data for main by-catch species
 Otoliths (and stomach samples, if being collected) for Target species (FAO species code)
 Basic biological data for by-catch species
 Biological samples of by-catch species (if being collected)

Commented [P21]: SC-06-16:
As combination of number and color does not create unique values, we propose to add a "wording" column

Commented [PS22]: CHN: replace State by CCP

Take photos
<p>For trawl fishing activities ONLY</p> <p>Gear details Net ID Net type (ISSFCV) Headrope length (m) Groundrope length (m) Bobbin diameter (cm) Otterboard to wing length (m) Horizontal Opening (m) Vertical Opening (m)</p> <p>Codend mesh Mesh size (cm), -codend circumference (cm), Orientation Mesh type (diamond, square, etc)</p> <p>Otterboard Type, weight (kg)</p> <p>Net design Net design description including make, model etc</p>
<p>Trawl details Trawl Number Gear Trawl type: Research or Commercial (R/C) Observed (Yes/No) Target Species (FAO species code) Date Start (YYYY.MON.DD) Date Finish (YYYY.MON.DD) Time net deployed (hh:mm) Time net retrieved (hh:mm)</p> <p>Start and End Fishing</p> <p>For Trawl fishing for bottom trawl "start" is defined as when the groundrope is on the bottom, "end" is when the <u>hauling starts to end</u>. For for midwater trawl "start" is defined as when the fishing gear is at target fishing depth, "end" is when the <u>hauling starts to end</u>. <u>If it is not possible to record, collect numbers that the gear touches the sea bottom accidentally in each set</u></p> <p>Time (hh:mm)</p> <p>Latitude Longitude Trawl Depth (m) Bottom Depth (m)</p> <p>Other</p>

Commented [PS23]: JAPAN: For the mid water and aimed trawl, technically it is difficult to record start & end position. Thus, we propose to add this sentence.

Offal discharged during shooting (Y/N)
 Offal discharged during hauling (Y/N)
 Trawl speed (knots)
 Horizontal opening (m)
 Total catch (kg)

Observed catch composition
 Observer ID
 Was Haul observed for fish/invertebrate by-catch (Y/N):
 Record the total weight of all sub-samples for this shot (kg):

Species
 FAO species code
 Scientific name
~~Estimated Total~~ retained catch weight (kg) or number of individuals
~~Estimated Total~~ discarded catch weight (kg) or number of individuals

Bycatch mitigation measures employed:
 Were bird scaring (tori) lines in use? (Yes/No)
 Were bird bafflers in use? (Yes/No)

Trawl warp strike (to be monitored for 15 minutes immediately after the net has been deployed). (optional)
 Trawl number (optional)
 Name of observer (optional)
 Start observation time (hh:mm) (optional)
 End observation time (hh:mm) (optional)

Number of heavy warp strikes (record for Albatross, Giant Petrels, White chinned petrels, Other petrels)

Air
 Water
 Sinker

Seabird abundance observation
 Seabirds present in observation area (y/n)
 Estimated numbers of abundance (by species)

For Longline fishing activities ONLY

Longline Description
 Longline Type (FFSSCV)
 Period in which the gear was used (YYYY.MON.DD)
 Start and end date (YYYY.MON.DD)
 Target Species (FAO species code)

Main Line
 Material
 Diameter (mm)

Commented [PS24]: JAPAN: As it is not possible to collect catch weights (retained and discarded) of all species (more than 100?) in the limited time and man power, we need to add this.

Integrated ~~weight~~^{Wt} (g/m)

Branch Lines

Material

Length (M)

Spacing (m)

Hooks

Type (e.g.: J shaped, Circular, etc.)

Make

Size (inch)

Total length (mm)

Shank (mm)

Gape (mm)

Throat (mm)

Front length (mm)

Usual setting position

Line off bottom (m) (optional for pelagic longline)

Hooks off bottom (m) (optional for pelagic longline)

Method of baiting (manual/automatic)

Automatic baiting equipment (make and model)

Hook sinkers

Size (g)

Position from hook (mm)

Offal dumping position (port, starboard, stern)

Longline setting position (port, starboard, stern)

Offal dumping during hauling (never, occasionally, always)

Propeller rotation direction (clockwise/anti-clockwise)

Detail the weight and distance between the line weights for the longline

system used

Single (Auto) Line (kg:m)

Double (Spanish) Line (kg:m)

Trotline (vertical droppers/trots attached to a mainline) (kg:m)

General Streamer Line Description

Vessel equipped with a streamer line (y/n)

Number of streamer lines regularly set

Streamer line position (port, starboard, stern)

Streamer line length (m)

Streamer length min/max (m)

Attached height above water (m)

Distance between streamers (m)

Number of streamers

Streamer design (single or paired)

Aerial extent of line (m)

Method used to assess aerial extent

Streamer material

Streamer line diameter (mm)

Streamer colours

Streamer line over bait entry position? (y/n/u)

Distance from stern to bait entry point (m)

Towed object (Y/N)
 Horizontal distance from bait entry point to streamer line (m)

Daily setting observations

Set Number (as referenced in catch and effort log)
 Set Type: Research or Commercial (R/C)
 Longline Type Code (FSSCV)
 Trotline cetacean exclusion device used (Y/N)
 Date of observation (YYYY/MON/DDy)

Setting information

Vessel setting speed (knots)
 Number sets unobserved since last set

Start and End setting for each haul

Date (YYYY/MON/DD)
 Time (hh:mm)
 Latitude
 Longitude
 Bottom Depth (m)
 Total length of longline set (km)
 Total number of hooks for the set

For each Observation

Start date (YYYY.MON.DD)
 Start time (hh:mm)
 End date (YYYY.MON.DD)
 End time (hh:mm)

Details of Longline Setting

Main line length (m)
 Number of hooks set
 Number of Baskets/Magazines Set
 Number of hooks per Basket/Magazine
 Percentage hooks baited
 Distance between branches (m)
 Distance of hooks off bottom (m) [\(optional for pelagic longline\)](#)
 Bait species (FAO species code)
 Deck lights during setting (On, Off)
 Streamer lines used (Yes, No)
 Number of streamer lines used Offal dumping during setting (Yes, No)
 Bait entry position (Port, Starboard, Stern)

Daily hauling observations

Set number
 Date of observation (YYYY.MON.DD)

Hauling Information

Number of hooks observed for seabird and fish by-catch (tally period)
 Offal dumped during hauling (Yes / No)

<p><u>Interactions with marine mammals</u></p> <p><u>Data is to be collected in accordance with the protocol set out in annex E. For each haul and each species of depredating whales (killer whales <i>Orcinus orca</i> and sperm whales <i>Physeter macrocephalus</i>):</u></p> <p><u>- Priority 1 data to be collected include:</u></p> <p><u>1. Presence/absence data: Presence / Absence / Not observed;</u></p> <p><u>2. When presence, photo-identification data: photographs of specific body parts (for killer whales: dorsal fin, saddle patch and eye patches; for sperm whales: tail flukes) visible when whales come to the surface.</u></p> <p><u>- Priority 2 data to be collected include:</u></p> <p><u>1. Estimates of the number of individuals present around the vessel in the vicinity of the fishing gear.</u></p> <p><u>- Priority 3 data to be collected include:</u></p> <p><u>1. Information about whether or not whales interact with the gear;</u></p> <p><u>2. Estimate of the time of arrival of whales in the vicinity of the gear.</u></p> <p><u>Gear lost</u> Number of sections lost Number of hooks lost that were attached to lost sections of the longline Number of other hooks lost (excluding hooks attached to lost sections)</p> <p><u>Observed catch composition</u> Was Haul observed for fish/invertebrate by-catch (Y/N): Estimate percentage of the haul observed for by-catch (%)</p> <p><u>Species</u> Species code (FAO species code) Total retained catch weight (kg) <u>or total number</u> Total discarded catch weight (kg) <u>or total number</u></p> <p><u>Species Retained</u> Observed number retained Observed number retained with tags</p> <p><u>Species Discarded</u> Observed number discarded Observed number discarded dead -Observed number discarded alive</p> <p><u>Species Lost</u> Observed number lost/dropped off at surface</p>	<p>Commented [PS25]: Addition of the mammal interaction observation proposed by FR-OT (ref CC-05-14 rev1)</p> <p>Commented [P26]: During longline observation, fishery observers can only report catch numbers by species. The protocol makes it impossible to weigh.</p> <p>Commented [P27]: SC-06-16: the cut off th line can't be submitted as there are only columns for retained, discarded or lost at surface</p>
<p>For Trapping/Potting Fishing Activities ONLY</p> <p><u>Gear type</u></p>	

pot type (with drawing)
 mesh size (mm)

Funnel position
~~e~~Orientation
~~a~~Aperture (cm)
~~n~~Number of chambers
 Escape port present (y/n)
~~dimensions~~~~Dimensions~~ (cm) of escape port

Processing Details and Conversion Factors (CF)
 Haul Number
 Name of observer
 Species Code (FAO species code)
 Processing Code
 Length Range (~~Min~~imum ~~Max~~imum)
 Number of individuals
 Live Weight (kg)
 Processed Weight (kg)
 Grade
 Conversion Factor

Set and haul details
 Set Number
 Date of observation YYYY.MON.DD)
 Set Type: Research or Commercial (R/C)
 Target species (FAO species code)
 Offal dumped during setting (Yes / No)
 Offal dumped during hauling (Yes / No)

Start and End setting. Repeat for hauling
 Date (YYYY.MON.DD)
 Time (:mm)
 Latitude
 Longitude
~~bottom~~~~Bottom~~ depth (m)

Gear Details
 Length of line (m)
 Type of line Pot spacing (m)
 Bait type

Setting
~~number~~~~Number~~ of pots set
~~number~~~~Number~~ of pots observed

Hauling
 number of pots hauled
 number of pots observed

Observed interactions with birds or marine mammals

Formatted: French (France)
 Formatted: French (France)
 Formatted: French (France)

Species Code (FAO species code)

At Setting
 Abundance (500m radius)
 Gear interaction (y/n)

At Hauling
 Abundance (500m radius)
 Gear interaction (y/n)

Observed catch composition
 Name of observer
 Was Haul observed for fish/invertebrate by-catch (Y/N):
 Estimate percentage of the haul observed for by-catch (%):

Number of pots observed for by-catch:
 Species Code (FAO species code)
~~T~~total retained catch weight (kg)
~~total~~Total discarded catch weight (kg)

Species Retained
~~observed~~Observed number retained
~~observed~~Observed number retained with tags

Species Discarded
~~observed~~Observed number discarded
~~observed~~Observed number discarded dead
~~observed~~Observed number discarded alive

Species Lost
~~observed~~Observed number lost/dropped off at surface

For Dahn/Drop lining/ ~~Handline fishing~~ activity ONLY

Dahn/Dropline Description
 Line Type
 Period in which the gear was used (YYYY.MON.DD) Start and end date
 Target species (FAO species code)

Main Line
 Material
 Diameter (mm)
 Integrated Wt (g/m)

Hooks
 Type (e.g.: J shaped, Circular, etc.)
 Make
~~Size (inch)~~
 Total length (mm)
 Shank (mm)
 Gape (mm)

Commented [PS28]: proposed as a new section (next below)

Throat (mm)
 Front length (mm)
 Usual setting position
 Line off bottom (m)
 Hooks off bottom (m)
 Method of baiting (manual/automatic)
 Automatic baiting equipment (make and model)

Offal

Offal dumping position (port, starboard, stern)
~~offal-Offal~~ dumping during hauling (never, occasionally, always)
 Propeller rotation direction (clockwise/anti-clockwise)

General Streamer Line Description

Vessel equipped with a streamer line (y/n)
 Number of streamer lines regularly set
 Streamer line position (port, starboard, stern)
 Streamer line length (m)
 Streamer length min/max (m)
 Attached height above water (m)
 Distance between streamers (m)
 Number of streamers
 Streamer design (single or paired)
 Ariel extent of line (m)
 Method used to assess aerial extent
 Streamer material
 Streamer line diameter (mm)
 Streamer colours
 Streamer line over bait entry position? (y/n/u)
 Distance from stern to bait entry point (m)
 Horizontal distance from bait entry point to streamer line (m)

Details of Dahn/Dropline/~~Handline~~ Setting

Main line length (m)
 Number of hooks set
 Percentage hooks baited
 Distance between branches/snoods (m)
 Distance of hooks off bottom (m)
 Bait species
 Bait size
 Bait proportion
 Deck lights during setting (On, Off)
 Streamer lines used (Yes, No)
 Number of streamer lines used Offal dumping during setting (Yes, No)
 Daylight period
 Moonlight
 Bait entry position (Port, Starboard, Stern)
 Vessel setting speed (knots)

Start and End setting. Repeat for Start and End of hauling

Date (YYYY.MON.DD)
 Time (hh:mm)

Formatted: Right: 3.35 cm

Latitude
 Longitude
 Bottom Depth (m)

Gear lost
 Number of sections lost
 Number of hooks lost that were attached to lost sections of the dahn/dropline
 Number of other hooks lost (excluding hooks attached to lost sections)

Observed catch composition
 Observer ID
 Was Haul observed for fish/invertebrate by-catch (Y/N):
 Estimate percentage of the haul observed for by-catch (%)
 Species (data shall be collected for each observed species)
 Species code (FAO species code)
 total retained catch weight (kg)
 total discarded catch weight (kg)

Species Retained
 observed number retained
 observed number retained with tags

Species Discarded
 observed number discarded
 observed number discarded dead
 observed number discarded alive

Specimen cut off (if possible)
Yes / No
For each species caught
 • Taxa name
 • Number alive
Number dead or injured]

Species Lost
 observed number lost/dropped off at surface

Handline fishing activity

Handline Description
Target species (FAO species code)

Main Line
Material
Diameter (mm)
Integrated Wt (g/m)

Hooks
Type (e.g.: J shaped, Circular, etc.)
Make
Size (inch)

Formatted: Right: 2.08 cm

Commented [PS29]: SPECIFIC SECTION FOR HANDLINE FISHING PROPOSED BY THAILAND

Formatted: Left

Formatted: Font: Not Bold

Formatted: Font: Not Bold

Formatted: Font: Not Bold

Formatted: Font: Not Bold

<u>Total length (mm)</u>	
<u>Shank (mm)</u>	
<u>Gape (mm)</u>	
<u>Throat (mm)</u>	
<u>Front length (mm)</u>	
<u>Usual setting position</u>	
<u>Line off bottom (m)</u>	
<u>Hooks off bottom (m)</u>	
Offal	
<u>Offal dumping position (port, starboard, stern)</u>	Formatted: Font: Not Bold
<u>Offal dumping during hauling (never, occasionally, always)</u>	
<u>Propeller rotation direction (clockwise/anti-clockwise)</u>	
Details of Handline Operation	Formatted: Highlight
<u>Main line length (m)</u>	Formatted: Font: Not Bold
<u>Number of fishermen operating handlines</u>	Formatted: Highlight
<u>Number of line lifts per fisherman (average)</u>	Formatted: Highlight
<u>Number of hooks per line</u>	Formatted: Highlight
<u>Percentage hooks baited</u>	Formatted: Font: Not Bold
<u>Bait species</u>	
<u>Bait size</u>	
<u>Bait proportion</u>	
<u>Deck lights during setting (On, Off)</u>	
Start and End time of operation	Formatted: Highlight
(An operation is a defined period of fishing between start and end date)	
<u>Date (YYYY.MON.DD)</u>	Formatted: Font: Not Bold
<u>Time (hh:mm)</u>	
<u>Latitude</u>	
<u>Longitude</u>	
<u>Bottom Depth (m)</u>	
Gear lost	Formatted: Left
<u>Number of hooks lost</u>	Formatted: Font: Not Bold
Observed catch composition	Formatted: Font: Not Bold
<u>Observer ID</u>	Formatted: Font: Not Bold
<u>Was Haul observed for fish/invertebrate by-catch (Y/N):</u>	
<u>Estimate percentage of the haul observed for by-catch (%)</u>	
<u>Species (data shall be collected for each observed species)</u>	
<u>Species code (FAO species code)</u>	
<u>total retained catch weight (kg)</u>	
<u>total discarded catch weight (kg)</u>	
Species Retained	
<u>observed number retained</u>	Formatted: Font: Not Bold
<u>observed number retained with tags</u>	
Species Discarded	
<u>observed number discarded</u>	Formatted: Font: Not Bold
<u>observed number discarded dead</u>	
<u>observed number discarded alive</u>	

<p>Species Lost <u>observed number lost/dropped off at surface</u></p>
<p>Interactions with Vulnerable Marine Ecosystems (VME)</p> <p>General information Name of observer Name of vessel Date Trip number Set number</p> <p>VME location Start and end positions of all gear deployments and/or observations. (Latitude/longitude) Depth(s) fished (m)</p> <p>Fishing Gear Indicate fishing gears used at each location</p>

Formatted: Pattern: Clear (White)
 Formatted: Font: Not Bold

<p>VME Taxa</p> <p>a) Species (identified taxonomically as far as possible, or accompanied by a photograph where identification is difficult).</p> <p>b) <u>An estimate of the quantity (weight (kg) or volume (m3)) of each listed benthic species caught in the tow (and the unit of measurement).</u></p> <p>c) An overall estimate of the total quantity (weight (kg) or volume (m3)) of all invertebrate benthic species caught in the tow. <u>(and the unit of measurement)</u></p> <p>d) Where possible, and particularly for new or scarce benthic species which do not appear in ID guides, whole samples should be collected and suitably preserved for identification on shore.</p> <p>e) Collect representative biological samples from the entire VME catch. (Biological samples shall be collected and frozen when requested by the scientific authority in a Contracting Party). For some coral species that are under the CITES list photographs should be taken.</p> <p><u>Other benthos taxa</u></p> <p><u>Yes/No</u> <u>For each retained catch of benthic organisms species</u> <u>Scientific names (identified at the lowest taxon level possible)</u> <u>FAO code (if available)</u> <u>Estimation of the amount caught</u></p>
--

Commented [P30]: SC-06-16:
 Few discrepancies between the "codes help" sheet and the document « PAEWG-02-09 SIOFA VME taxa guide v.0.1.pdf » are noted. It is necessary to specify which document to refer to.

Commented [P31]: SC-06-16:
 Clarifications are requested on the definition of « quantity estimate » column.
 If it corresponds to VME-indicator units (sum of total volume + total weight) we propose to change the column comment in order to be more precise.
 If it is to note weight (Kg) or volume (m3) with no distinction, in this case we propose to add a column to separate weight and volume data.

Specifications for the Exchange of Data

1. Coordinated Universal Time (UTC) shall be used to describe times, using the following submission format: YYYY-MON-DDThh:mm:ss where:
 - a. YYYY - represents a 4-digit year e.g. "2007"
 - b. MON - represents a 3-character month abbreviation e.g. "APR"
 - c. DD - represents a 2-digit day e.g. "05"
 - d. T - is a space separator
 - e. hh - represents hours based on the 24hr clock (length = 2 digits) e.g. "16"
 - f. mm - represents minutes (length = 2 digits) e.g. "05"
 - g. ss - represent seconds (length = 2 digits) e.g. "00"

Example

2003-JUL-17T13:10:00 = 1.10pm (1310h), 17 July 2003

~~2. Coordinates Decimal degrees (WGS84) are to be used to describe precise locations and the following standards shall be used: Degrees minutes seconds (DD°MM'SS"), or Degrees minute decimal (DD°MM.XX) or Decimal degrees (DD.XXXX). Add N or S to indicated North or South for latitudes. Add E to indicate the Eastern longitude (the SIOFA Area is always in the Eastern longitudes), for decimal degrees, add minus for southern latitudes.~~

~~Examples:~~

- ~~Latitude= 42°37'06" S Longitude= 48°03'58" E.~~
- ~~Latitude= 35°09.70" S Longitude= 51°12.94"~~
- ~~Latitude= -10.0386 Longitude= 61.7088~~

Formatted: French (France)

Formatted: French (France)

Formatted: French (France)

Formatted: French (France)

~~2. The following standard shall be used for the submission of latitudinal/ longitudinal information:~~

- ~~a. Northern latitudes and eastern longitudes should be indicated by the use of [unsigned] positive decimal degree values~~
- ~~b. Southern latitudes and western longitudes should be indicated by the use of negative decimal degree values~~

Latitude – Degrees: Represented as positive (unsigned) or negative numbers from 0 to 89.99	E.g. If value = 83.2, this means 83.2° N E.g. if value = -83.2, this means 83.2° S
Longitude – Degrees: Represented as positive (unsigned) or negative numbers from 0 to 179.99	E.g. If value = 83.2, this means 83.2° E E.g. if value = -83.2, this means 83.2° W

3. Metric units of measure be used, specifically:

- a. ~~Tonnes or~~ kilograms are to be used to describe catch weight
- b. Metres are to be used to describe height, width, depth, beam or length
- c. Cubic metres are to be used to describe volume
- d. Kilowatts are to be used to describe engine power

Role and tasks of the scientific observer

1. The function of scientific observers on board vessels engaged in harvesting of marine living resources is to independently observe and report on the operation of fishing activities in the SIOFA Area.
2. In fulfilling this function, scientific observers will undertake the following tasks:
 - a. Record details of vessel operations, including inter alia, times of, searching, fishing, transit etc., and details of hauls;
 - b. Take biological samples of catches;
 - c. Record biological data of species caught;
 - d. Record by-catch information, such as species, quantity and other biological data [as specified in Annex B]
 - e. Record interactions with seabirds, marine mammals, and marine reptiles
 - f. Record information on catch including data relating to processed conversion factors;
 - g. prepare reports of their observations for their respective national authorities;
 - h. collect and report data on sightings fishing vessels, unmarked fishing gear, and recovery of fishing gear in the SIOFA Area, including vessel type identification, vessel position and activity and gear type;
 - i. collect information on fishing gear loss and waste disposal by the fishing vessels at sea.

2 – Proposal for a new annex E to CMM 2019/02

Commented [PS32]: New annex proposed on the protocol for documenting mammal interaction (ref CC-05-14 rev1)

Annex E

Protocol for documenting whale interaction in deep-sea demersal longline fisheries

Priority 1 Data to be collected

Presence

For every haul and for each species:

Haul	Presence ?	Comment
1	Absent	
2	Present	
3	Present	Night time but clearly see them in projectors
4	Not observed	Night time, can't see them but can't say they are not present around.

Requirement: data /should be collected [with the help of the crew] for every haul to the extent possible.

Requirement: data mandatory and must be collected for every haul.

“Presence”: Favourable conditions (visibility is at least several hundred meters with sufficient light) and observation by the observer (observer can be alerted by the crew when whales are sighted). The presence of whales is confirmed by direct observation of at least one individual at the surface in the vicinity of the vessel at least once during 1 haul. Note that presence can also be observed at night when killer whales come very close to the boat.

“Absence”: Favourable conditions and no odontocete spotted at any time during the entire haul.

“Not observed” is used either if the observer did not have time to gather information (e.g. if line broke), or if conditions are too bad to observe (either weather conditions, or hauling at night).

Photos

For every haul and for each species:

Haul	Presence ?	Photos?	Comment
1	Absent	No	
2	Present	Yes	
3	Present	No	Night time: too dark for pictures
4	Not observed	No	Night time: too dark for pictures

Requirement: data /should be collected [with the help of the crew] for every haul to the extent possible.

Requirement: data mandatory and must be collected for every haul.

With this additional field, observers indicate whether they took pictures of whales for photo-identification purposes or not during the haul of the set.

Priority 2 Data to be collected

Number of individuals

For every haul and for each species:

Haul	Presence ?	minimum	maximum	comment
1	Absent	0	0	
2	Present	15	22	
3	Present	1		At least one but too dark for accurate estimate
4	Not observed			

~~Requirement: data must/should be collected [with the help of the crew] for every haul when present to the extent possible.~~

Formatted: Highlight

Formatted: Strikethrough, Highlight

Providing exact counts of individuals from the surface may be difficult for observers as whales can dive for long periods of time. To account for uncertainty around counts, observers may fill in two fields:

- Minimum estimate of the number of individuals,
- Maximum estimate of the number of individuals.

Priority 3 Data to be collected

Interaction with fishing gear

For every haul and for each species:

Haul	Presence ?	Interaction with fishing gear?	Comment
1	Absent	No	
2	Present	Yes	Saw them diving close to the line
3	Present	Yes	Head of fish were observed
4	Not observed		

~~[Requirement: Where possible with the help of the crew, data must/should be collected [with the help of the crew] for every haul when present.]~~

[Requirement: data /should be collected [with the help of the crew] for every haul to the extent possible.]

Formatted: Highlight

~~Requirement: data must should be collected for every haul when present.~~

Formatted: Strikethrough

When Presence, interaction with fishing gear is taken into account if whales are diving close to the lines or directly observed with fish in their mouths.

Estimated Time of Arrival (ETA)

For every haul and for each species:

Haul	Presence ?	ETA	Comment
1	Absent	NA	Not applicable
2	Present	0:30	We were able to haul 30 minutes before they arrive
3	Present	0:00	Saw them in projectors even before first hook came on board
4	Not observed	NA	Not applicable

~~[Requirement: Where possible with the help of the crew, data must/should be collected [with the help of the crew] for every haul when present.]~~

~~Requirement: data must be collected for every haul when present.~~

[Requirement: data /should be collected [with the help of the crew] for every haul to the extent possible.]

Formatted: Highlight

The Estimated Time of Arrival here corresponds to the time between the first hook of the line hauled on board and the arrival of sperm whales / killer whales. If whales are already present when hauling starts then ETA is zero.

CMM 2020/15¹**Conservation and Management Measure for the Management of Demersal Stocks in the Agreement Area (Management of Demersal Stocks)****The Meeting of the Parties to the Southern Indian Ocean Fisheries Agreement;**

RECOGNISING that Article 4(a) of the *Southern Indian Ocean Fisheries Agreement* (the Agreement) calls on the Contracting Parties, in giving effect to the duty to cooperate, to adopt measures on the basis of the best scientific evidence available to ensure the long-term conservation of fishery resources, taking into account the sustainable use of such resources and implementing an ecosystem approach to their management;

FURTHER RECOGNISING Articles 4(c), (e) and (f) of the Agreement which call on the Contracting Parties to apply the precautionary approach and the principles that fishing practices and management measures shall take due account of the need to minimise the harmful impact that fishing activities may have on the marine environment and that biodiversity in the marine environment shall be protected;

FURTHER RECOGNISING Articles 6(1)(d) and (e) of the Agreement which provide that the Meeting of the Parties shall adopt conservation and management measures (CMMs) necessary for ensuring the long-term sustainability of fishery resources, taking into account the need to protect marine biodiversity, based on the best scientific evidence available and adopt generally recommended international minimum standards for the responsible conduct of fishing operations;

MINDFUL of Article 16 of the Agreement that calls on Contracting Parties, acting jointly under the Agreement, to cooperate closely with other international fisheries and related organisations in matters of mutual interest;

COMMITTED to ensuring that bottom fishing undertaken in the Agreement Area is consistent with the long-term sustainability of deep-sea fish stocks and the protection of the marine environment;

ADOPTS the following CMM in accordance with Article 6 of the Agreement:**Objective**

1. The objective of this CMM is to promote the sustainable management of deep-sea fisheries resources in the Agreement Area, including target fish stocks and non-target species.

General provisions

2. This CMM applies to all fishing vessels flying the flag of a Contracting Party, cooperating non-Contracting Party, participating fishing entity or cooperating non-participating fishing entity (collectively CCPs) to the Agreement engaging or intending to engage in bottom fishing in the Agreement Area.

Status of Stocks

3. The Scientific Committee shall provide annual reports, based on the best available science, on the status of the demersal fisheries resources targeted in the Agreement Area, relative to available

¹ CMM 2020/15 (Management of Demersal Stocks) supersedes CMM 2019/15 (Management of Demersal Stocks).

and/or relevant reference points. The reports shall include, where possible, projections of stock status over a period no less than 20 years, with 5 years steps, relative to a range of fishing mortality. In addition to the annual report on stock status, the Scientific Committee will provide management advice relative to available and/or relevant reference points.

Orange Roughy

Fishing season

4. For the purposes of this CMM, the fishing season for *Hoplostethus atlanticus* in the Agreement area shall be defined as the period from 1st January to 31 December both dates inclusive.

Stock assessment

5. The orange roughy stocks shall be the subject of a full stock assessment to be assessed every three to five years. In the interim period available information on ORY stocks shall be presented annually.
6. The SC shall provide a summary of future data needs to improve assessment accuracy, as well as provide a summary to MoP-7 on progress against the ORY workplan.

Toothfish

7. ~~For the purpose of this fishery, the target species are *Dissostichus mawsoni* and *Dissostichus eleginoides*, defined as *Dissostichus* spp.~~

~~7.8.~~ The objectives of this section are to:

- a. ensure collaborative and complementary arrangements are in place for *Dissostichus* spp.~~*D. eleginoides*~~ between SIOFA and the Commission for the Conservation of the Antarctic Marine Living Resources (CCAMLR); and
- b. ensure that fishing mortality of *Dissostichus* spp.~~*D. eleginoides*~~ on William's Ridge in the Agreement Area² and Del Cano Rise do not cause biologically sustainable catch levels to be exceeded, taking into account population links.

~~8.9.~~ The catch limit for *Dissostichus* spp. on Del Cano Rise, and research catch limit for *Dissostichus* spp. on William's Ridge as specified in paragraphs 16 and 37 shall apply until:

- a. the Meeting of the Parties has adopted a biologically appropriate catch limit for the populations of *Dissostichus* spp.~~*D. eleginoides*~~ occurring in the SIOFA portion of Williams Ridge and Del Cano Rise and other appropriate management measures which are comparable in effectiveness to those in force in CCAMLR taking into account the advice and recommendations of the SIOFA Scientific Committee and
- b. the Meeting of the Parties has adopted appropriate bycatch mitigation measures, including measures to minimize the incidental catch of seabirds which are comparable in effectiveness to those in force in CCAMLR consistent with the advice provided by the Scientific Committee.

~~9.10.~~ The Scientific Committee shall, by no later than the close of its 7th ordinary meeting in 2022, provide advice and recommendations on:

² The portion of Williams Ridge in the Agreement Area is bounded by the area 80E to 85E and 52S to 55S.

Formatted: Font: Not Italic

Formatted: Font: Not Italic

- a. a biologically appropriate catch limit for the populations of *Dissostichus spp. D. eleginoides* occurring in the SIOFA portion of Williams Ridge and Del Cano Rise;
- b. appropriate bycatch mitigation measures, including for benthic bycatch and seabirds; and
- c. any other matter that the Scientific Committee determines as relevant or necessary for the sustainable management of the *Dissostichus spp. D. eleginoides* populations.

10.11. In formulating its advice and recommendations to the Meeting of the Parties in respect of this CMM, the SIOFA Scientific Committee shall take full account of relevant CCAMLR Scientific Committee material.

11.12. CCPs with an interest in this stock shall cooperate to ensure scientific collaboration between CCAMLR and SIOFA to ensure long-term sustainable management for *Dissostichus spp. D. eleginoides* stocks which takes due account of relevant rights and responsibilities under international law, and which does not undermine the conservation status of the stock.

General Provisions

12.13. Fishing with demersal longlines shall be prohibited in depths shallower than 500m. in order to protect benthic communities and juvenile *Dissostichus* spp.

Management measures for toothfish in the Del Cano Area [FAO Subarea 51.7]

Definitions Area

- 13. For the purpose of this fishery, the target species are *Dissostichus mawsoni* and *Dissostichus eleginoides*, defined as *Dissostichus* spp.
- 14. For the purpose of this fishery, the Del Cano Rise area is defined as the area set out in Figure A.

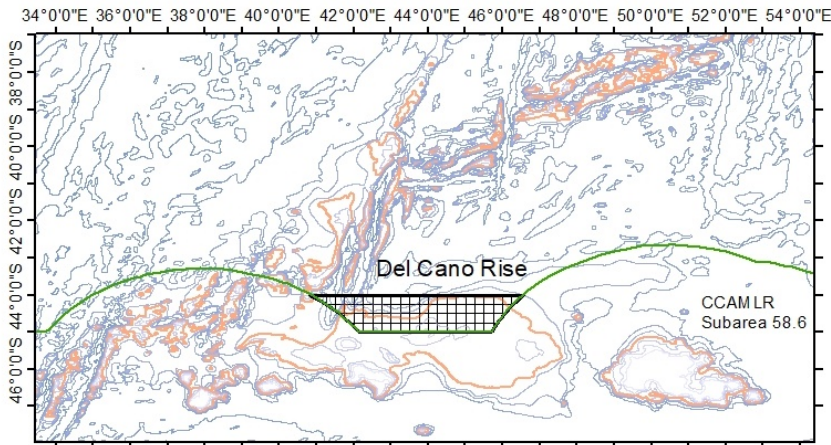


Figure A: Extent of the proposed Del Cano Rise area. The area is bounded between -44S and -45S latitude, and the adjacent EEZ to the east and west. The red bathymetry line denotes depth at -2000 m.

Season

15. For the purpose of the longline fishery for *Dissostichus* spp in [FAO Subarea 51.7], the season is defined as the period from 1 December to 30 November both dates inclusive.

Effort/catch and operational limits

16. -CCPs shall ensure that the total annual catches of *Dissostichus* spp in the Del Cano Rise area do not exceed 55 tonnes. Without prejudice to any future sharing arrangement of the catch opportunities, this catch shall be equally shared between those CCPs which have historical catches declared to SIOFA up to 2016 in the Del Cano Rise area. Any excess by a given CCP in a given year shall be deducted from its following year catch share.
17. CCPs shall send monthly reports of their *Dissostichus* spp catches to the Secretariat, [using the template at Annex I](#). As soon as 90% of the catch limit is reached, the Secretariat shall notify the CCPs of the closure of the fishery.
18. CCPs shall ensure that their fishing vessels inform the Secretariat daily on start and end points of set longlines, [using the template at Annex II](#).
19. Longlines shall not exceed 3000 hooks per line and shall be set at minimum 3 nautical miles from each other.

By-catch limits

20. Toothfish caught by vessels not targeting *Dissostichus* spp may not exceed 0.5 t per season of *Dissostichus* spp.
21. Should a vessel fishing for species other than *Dissostichus* spp reach the *Dissostichus* spp limit of 0.5 tonnes, the Del Cano area shall be closed for this vessel for that season.

Mitigation of depredation

22. To reduce likelihood of depredation, vessels are encouraged to not haul longlines in the presence of killer whales (*Orcinus orca*) and are discouraged from hauling longlines in presence of any odontocete (toothed) whales.
23. Should killer whales arrive during hauling operations, the vessels are encouraged to cease hauling, tie off the longline with a buoy, and move on. The vessel may only retrieve the tied-off line once the killer whales are no longer near the line.
24. To further reduce potential for depredation, vessels are encouraged to set lines at depths exceeding 1000 m.

VMS polling

25. CCPs shall require their flagged vessels fishing for *Dissostichus* spp in this area to report VMS data automatically to their FMC at least every hour when they are present in the Del Cano area.

Observers

26. Each vessel participating in the fishery shall have at least one scientific observer on board throughout all fishing activities within the fishing period. The observer shall have a target of observing 25% of hooks hauled per line over the duration of the fishing deployment.

Tagging and release

Formatted: Font: Bold

Formatted: Space Before: 0 pt, After: 8 pt

27. CCPs shall require their flagged vessels to tag and release *Dissostichus spp* specimens at a rate of at least 5 fish per tonne green weight caught. A minimum overlap statistic of at least 60% shall apply for tag release, once 30 or more *Dissostichus spp* specimens have been caught.

Scientific committee

28. In 2020 the SC shall make recommendations in order to build an area wide habitat model, a spatial and temporal CPUE analysis, an estimate and map of local abundancies and a local population assessment. It shall further advise on any necessary improvements to data collection in order to reduce future assessment uncertainty.
29. The SC shall also address the issues related to depredation
30. At its ordinary meeting in 2020 the Scientific Committee will advise on the appropriate limits for relevant species caught as bycatch in *Dissostichus spp.* fisheries.

Review

31. The provisions above shall be reviewed annually until a collaborative approach involving SIOFA and CCAMLR is established. This shall include sharing of relevant data, undertaking collaboratively the stock assessments and agreeing in coherent, fair and scientifically sound conservation and management measures for the *Dissostichus spp* that are shared by the two organisations.

Management & research measures for toothfish in Williams Ridge [FAO Subarea 57.4]

Definitions

- ~~32. For the purpose of this fishery, the target species are *Dissostichus mawsoni* and *Dissostichus eleginoides*, defined as *Dissostichus spp.*~~

Area and purpose

- ~~33.~~32. For the purpose of this fishery, Williams Ridge is defined as the area set out in Figure B and Table 2, and divided into a 15'x15' grid for spatial management. This grid is in place to address the risk of localised depletion and ensure representative data collection throughout the SIOFA part of Williams Ridge.

Season

- ~~34.~~33. For the purpose of the new longline fishery for *Dissostichus spp.* in Williams Ridge, the season is defined as the period from 1 December to 30 November (both dates inclusive).

Data collection for fisheries research

- ~~35.~~34. CCPs shall require their flagged vessels to tag and release *Dissostichus spp* ~~Toothfish~~ at a rate of at least 5 fish per tonne green weight caught. A minimum overlap statistic of at least 60% shall apply for tag release, once 30 or more *Dissostichus spp* ~~toothfish~~ have been caught.
- ~~36.~~35. Representative data and samples of length, weight, sex, maturity stage, gonad weight and otoliths shall be collected to contribute to the work of the 5th meeting of the Scientific Committee, and in particular to contribute to assessing the risk to localised depletion.

Effort/catch and operational limits

~~37.~~36. Total annual research catches in this area shall not exceed 140 tonnes. Any excess in a given year shall be deducted from that CCP from the following year.

~~39.~~37. CCPs shall ensure their vessels send ~~daily~~monthly reports of their *Dissostichus* spp. catches to the Secretariat using the template at Annex III and inform the Secretariat daily on start and end points of set longlines, using the template at Annex IV. As soon as 90% of the catch limit is reached, the Secretariat shall notify ~~the all CCPs~~ and CCPs shall ensure there is no further fishing effort by their fishing vessels for the remainder of the season~~of the closure of the fishery.~~

38. Only one fishing vessel at a time can fish for *Dissostichus* spp. in a given grid cell. A grid cell shall be closed to fishing by other vessels while a line is being set or hauled by a vessel, and while a line has been set by a vessel and has not been hauled.³

39. CCPs shall ensure that their fishing vessels inform the ~~s~~Secretariat as soon as they enter a grid cell to fish for *Dissostichus* spp., using the entry notification template at Annex V. Outside Secretariat business hours, an advance notification process will apply. The Secretariat shall inform the vessel as soon as possible⁴ [] of the number of lines that have been set in that grid cell during that season and whether it is currently being fished by another vessel, using the template at Annex VI. Where the Secretariat receives notifications from multiple fishing vessels for a given grid cell, the Secretariat will respond to the notifications in the order that they were received.

Commented [A1]: Note the additional edit in the footnote in bold text.

40. CCPs shall ensure that their fishing vessels shall not fish in a grid cell before having received ~~the~~ confirmation from the Secretariat that two lines have not already been set in that grid cell during that season and that it is not currently being fished by another fishing vessel, however a fishing vessel entering a grid cell to haul a line and to set a second line may haul the first line (but not set the second line) before receiving the confirmation.

41. CCPs shall ensure that their fishing vessels inform the ~~s~~Secretariat as soon as they exit the grid cell specified in paragraph 39 and that they inform the Secretariat of the number of lines they have set and/or hauled in that grid cell, if any, using the exit notification template at Annex VII.

42. Longlines shall not exceed 6250 hooks per line and shall not be set across grid cells.

~~43.~~ CCPs shall ensure that their fishing vessels inform the Secretariat daily on start and end points of set longlines.

~~44.~~43. CCPs shall ensure that no more than two lines in total are set per grid for the duration of the fishing season of *Dissostichus* spp.

Formatted: Font: Italic

~~45.~~44. After Once two lines have been set in a Williams Ridge~~given~~ grid cell, it shall be closed to fishing for the remainder of that a fishing vessel shall not be entitled to set any lines in that grid cell within the same fishing season. A fishing vessel can fish in any other Williams Ridge grid cell where two lines have not been set in that season.

~~46.~~ Once two lines have been set in a grid cell by a fishing vessel it cannot be fished by another fishing vessel during that same season.

³ For the avoidance of doubt, a vessel that ceases hauling a line in a grid cell in order to mitigate depredation in accordance with paragraphs 48 and 49 is still fishing in that grid cell until it hauls the line.

⁴ In accordance with any arrangements agreed ahead of each fishing season between the CCPs with fishing vessels fishing for *Dissostichus* spp. in Williams Ridge and the Chair of the MoP in consultation with the Secretariat. The arrangements could include procedures and expected timeframes for the Secretariat's response to prevent unreasonable operational disruption to fishing outside Secretariat business hours. **Once agreed, the Secretariat should circulate the arrangements to all CCPs before the beginning of the season.**

47.45. CCPs shall require their flagged vessels fishing for *Dissostichus* spp. in Williams Ridge to apply a break of a minimum of 30 days between consecutive fishing trips to Williams Ridge.

By-catch limits

48.46. Toothfish caught by vessels not targeting *Dissostichus* spp. may not exceed 0.5 tonnes per season.

49.47. Should a vessel fishing for species other than *Dissostichus* spp reach the *Dissostichus* spp limit of 0.5 tonnes, the Williams Ridge area shall be closed for this vessel for that season.

Mitigation of depredation

50.48. To reduce likelihood of depredation, vessels are encouraged not to haul longlines in the presence of sperm whales (*Physetes catodon*) and are discouraged from hauling longlines in presence of any odontocete (toothed) whales.

51.49. Should sperm whales arrive during hauling operations, the vessels are encouraged to cease hauling, tie off the longline with a buoy, and move on. The vessel may only retrieve the tied-off line once the sperm whales are no longer near the line.

Observers

52.50. Each vessel participating in the fishery shall have at least one scientific observer on board throughout all fishing activities within the fishing period. The observer shall have a target of observing 25% of hooks hauled per line over the duration of the fishing deployment.

Review

53.51. The level of fishing on Williams Ridge shall be reviewed annually. This CMM may be reviewed annually until a collaborative approach involving SIOFA and CCAMLR is established. This shall include sharing of relevant data, undertaking collaboratively the stock assessments and agreeing in coherent, fair and scientifically sound conservation and management measures for the *Dissostichus* spp that are shared by the two organisations.

Table 2: Williams Ridge Fishing Area Coordinates

Point	Latitude	Longitude
1	-52.5	80.0
2	-55	80.0
3	-55	85.0
4	-52.5	85.0

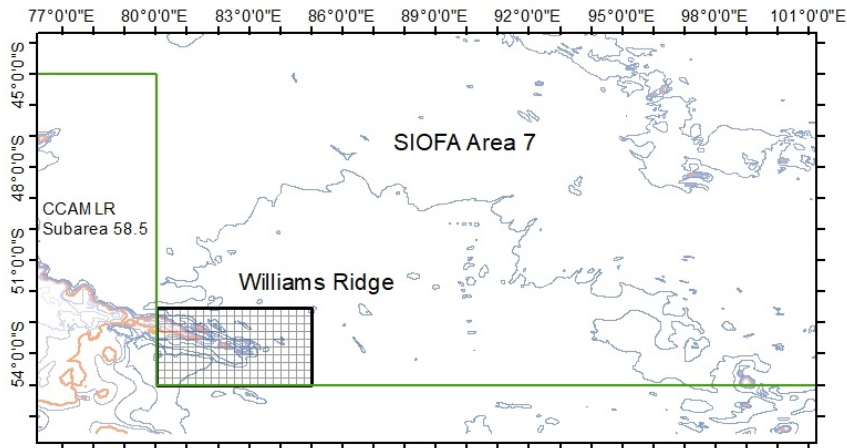


Figure B Extent of Williams Ridge. The area boundaries are given in Table 1. The red bathymetry line denotes depth at -2000 m.

Management plan for Alfonsino

Season

[54.52.](#) For the purpose of fishery for *Beryx splendens* in SIOFA area the season is defined as the period from 1 January to 31 December both dates inclusive.

Stock assessment

[55.53.](#) The MoP requests that the SC assess the *Beryx splendens* stocks in 2022 at the ordinary meeting of the Scientific Committee (if the SC, in 2021, determines that suitable data exist to undertake that assessment). In addition, the SC is requested to provide advice on a regular assessment schedule for future years

[56.54.](#) The Scientific Committee shall provide clear advice and guidance on any necessary changes to data collection in order to reduce future assessment uncertainty.

Application

[57.55.](#) This CMM shall apply from 1 December ~~2020~~2021.

Annex I - Template for CCPs to use for monthly catch reports to the Secretariat when fishing on the Del Cano Rise area (paragraph 17)

CCPs shall send monthly reports of their *Dissostichus* spp catches to the Secretariat ~~[at 06:00 UTC the first day of the next month]~~. This report shall be sent to SIOFA Secretariat ~~(mcs@siofa.org) as soon as no other fishing during the month is planned or on the last day of the month.~~

Formatted: Strikethrough

<u>Vessel name</u>	<input type="text"/>	<u>Vessel Flag</u>	<input type="text"/>
--------------------	----------------------	--------------------	----------------------

<u>Area</u> <small>(circle or underline correct area)</small>	<input type="text" value="DEL CANO RISE"/>	<input type="text" value="WILLIAMS RIDGE"/>	<input type="text" value="OTHER"/>
--	--	---	------------------------------------

<u>Year</u>	<input type="text"/>	<u>Month</u>	<input type="text"/>
-------------	----------------------	--------------	----------------------

<u>Catch live weight (Kg)</u>	<input type="text"/>	<u>Catch Pieces</u>	<input type="text"/>
-------------------------------	----------------------	---------------------	----------------------

Annex II - Template for CCPs to use for daily longline reporting to the Secretariat when fishing on the Del Cano Rise area (paragraph 18)

CCPs shall ensure that their fishing vessels inform the Secretariat (mcs@siofa.org) daily on start and end point of set longlines, and shall use the following template:

<u>Vessel name</u>	<input type="text"/>	<u>Vessel Flag</u>	<input type="text"/>
<u>Set Start Date</u>	<input type="text"/>	<u>Set Start Time</u>	<input type="text"/>
<u>Set Start Longitude</u>	<input type="text"/>	<u>Set Start Latitude</u>	<input type="text"/>
<u>Set Start Depth</u>	<input type="text"/>		
<u>Set End Date</u>	<input type="text"/>	<u>Set End Time</u>	<input type="text"/>
<u>Set End Longitude</u>	<input type="text"/>	<u>Set End Latitude</u>	<input type="text"/>
<u>Set End Depth</u>	<input type="text"/>		
<u>Number of hooks set</u>	<input type="text"/>		

Annex III - Template for CCPs to use for daily catch reports to the Secretariat when fishing on the Williams Ridge area (paragraph 37)

CCPs shall send daily catch reports of their *Dissostichus* spp catches to the Secretariat (mcs@siofa.org).

<u>Vessel name</u>	<input type="text"/>	<u>Vessel Flag</u>	<input type="text"/>
<u>Area</u> <small>(circle or underline correct area)</small>	<input type="text" value="DEL CANO RISE"/> <input type="text" value="WILLIAMS RIDGE"/> <input type="text" value="OTHER"/>		
<u>Month</u>	<input type="text"/>	<u>Day</u>	<input type="text"/>
<u>Catch live weight (Kg)</u>	<input type="text"/>	<u>Catch Pieces</u>	<input type="text"/>

Annex IV - Template for CCPs to use for daily longline reporting to the Secretariat when fishing on the Williams Ridge area (paragraph 37).

CCPs shall ensure that their fishing vessels inform the Secretariat (mcs@siofa.org) **daily** on start and end point of set longlines, and shall use the following template:

<u>Vessel name</u>		<u>Vessel Flag</u>	
<u>Set Start Date</u>		<u>Set Start Time</u>	
<u>Set Start Longitude</u>		<u>Set Start Latitude</u>	
<u>Set Start Depth</u>			
<u>Set End Date</u>		<u>Set End Time</u>	
<u>Set End Longitude</u>		<u>Set End Latitude</u>	
<u>Set End Depth</u>			
<u>Grid Cell* (e.g. C8)</u>			
<u>Number of hooks set</u>			

*Williams Ridge Area grid cells:

	A	B	C	D	E	F	G	H	I	J	K	L	M	N	O	P	Q	R	S	T	lat.
1																					
2																					
3																					53 S
4																					
5																					
6																					
7																					54 S
8																					
9																					
10																					55 S
long.	80 E				81 E				82 E				83 E				84 E			85 E	

Annex V – Template for vessel entry notification when fishing on the Williams Ridge area (paragraph 39)

[Vessel name] hereby notifies its entry into grid cell [Number] at [Date:Time (UTC)] to fish for toothfish.

I [Name of Captain] confirm that the [vessel name] will not commence fishing until receipt of confirmation from the Secretariat that two lines have not already been set in this cell during this fishing season and that the cell is not currently being fished by another vessel.

Annex VI – Template for Secretariat confirmation in response to vessel entry notifications when fishing on the Williams Ridge area (paragraph 39)

The Secretariat acknowledges receipt of your notification of entry into [grid cell number] to fish for toothfish and advises that:

1. [number of lines] have been set in this cell during this fishing season, and
2. this cell [is/is not] currently being fished by another vessel.

Annex VII – Template for vessel exit notification when fishing on the Williams Ridge area (paragraph 41)

[Vessel name] hereby notifies its exit from grid cell [Number] at [Date:Time (UTC)]. I [Name of Captain] inform you that the [vessel name] has (choose 1 option from the list below):

1. set 1 line
2. set 2 lines
3. hauled 1 line
4. hauled 2 lines
5. hauled 1 line and set 1 line

Section 1. CURRENT VERSION of CMM 2019/14 – Paragraph 22

“22. In carrying out boarding and inspection pursuant to this measure, Authorised Inspectors shall make their best efforts to communicate with the master of the fishing vessel(s) in a manner that the master can understand. In order to facilitate communications between the Authorised Inspectors and the master of the vessel wherever possible, the Meeting of the Parties shall develop a standardised questionnaire during the intersessional period following the 6th Meeting of the Parties, which once adopted shall be translated into multiple languages and circulated to all CCPs and published on the SIOFA website. The 4th Compliance Committee shall review the standardised questionnaire and provide any recommendations to the 7th Meeting of the Parties. Contracting Parties are encouraged to take communication needs into account when planning operations under this measure.”

Section 2. PROPOSED AMENDMENTS to CMM 2019/14 – Paragraph 22 (track changes version)

“22. In carrying out boarding and inspection pursuant to this measure, Authorised Inspectors shall make their best efforts to communicate with the master of the fishing vessel(s) in a manner that the master can understand. If necessary to facilitate communication between the authorized inspectors and the master of the fishing vessel, the authorized inspector shall use the relevant parts of the standardized questionnaire adopted by the MoP at its 8th meeting in 2021, which shall be translated into multiple languages, circulated to all CCPs and published on the SIOFA website. Authorized inspectors are encouraged to take communication needs into account when planning operations under this measure.”

Section 3. PROPOSED AMENDMENTS to CMM 2019/14 – Paragraph 22 (clean version)

“22. In carrying out boarding and inspection pursuant to this measure, Authorised Inspectors shall make their best efforts to communicate with the master of the fishing vessel(s) in a manner that the master can understand. If necessary to facilitate communication between the authorized inspectors and the master of the fishing vessel, the authorized inspector shall use the relevant parts of the standardized questionnaire adopted by the MoP at its 8th meeting in 2021, which shall be translated into multiple languages, circulated to all CCPs and published on the SIOFA website. Authorized inspectors are encouraged to take communication needs into account when planning operations under this measure.”

SIOFA HIGH SEAS BOARDING QUESTIONNAIRE

In accordance with paragraph 22 of CMM 2019/14, this questionnaire is provided as a guide only, to assist inspectors and facilitate a safe and transparent boarding when communicating with the master and/or crew of a fishing vessel encountered in the SIOFA Convention Area.

For that reason, the questionnaire will be translated into multiple languages. To facilitate communication based on a translated version of the questionnaire, each question has been numbered. In the case where crewmembers do not understand English, inspectors may ask the crew to use the questionnaire translated in their own language. Inspectors can use the translated versions of the questionnaire by referring to each question number, to ensure the master of the vessel clearly understands which question is under consideration.

The questionnaire is also divided into three distinctive parts, to distinguish between the actions prior to boarding, the conduct of the onboard inspection and finally the conclusion of the inspection.

Inspectors are not required to ask all of the questions presented below, nor to fill in or sign this questionnaire. Likewise, masters and crew are not required to fill in or sign this questionnaire. The requirement lies in the preparation and transmission of a full report on each boarding and inspection carried out under CMM 2019/14, including any supporting information, using the data fields in the Boarding and Inspection Reporting Form at Annex 1 of CMM 2019/14. Therefore, the inspector and the master of the vessel shall sign the boarding and inspection report only.

More generally, inspectors shall use their discretion and inspections shall be guided by physical surroundings and the actions of the fishing vessel that is targeted.

PART 1 : Prior to boarding

Note to inspectors : The following questions are provided to assist inspectors in establishing the *bona fides* of the vessel and to prepare the boarding crew and fishing vessel crew with information to accept and facilitate a safe and transparent boarding.

1. ESTABLISH RADIO CONTACT		
<p>1.1. <i>"This is (name of Patrol Vessel) :....., (flag state of PV) :.....(international call sign) :..... patrolling international seas in accordance with the Southern Indian Ocean Fisheries Agreement conservation and management measure on High Seas Boarding and Inspection. (CMM 2019-14).</i></p>		
1.2. <i>"Can you understand me?"</i>	Yes	No
<p>1.3. If not : <i>"Can you or any of your crew speak the following languages ?" :</i></p> <p>Note to inspectors : if crewmembers do not speak English, refer to each question</p>	<p>a) <i>English</i> b) <i>French</i> c) <i>Chinese</i> d) <i>Spanish</i></p>	

number for correspondence with the translated version of the questionnaire	e) <i>Other (Korean, Japanese, Thai, or other) :</i>	
1.4. <i>What is your flag-State?</i>		
1.5. <i>“Your country-authority has agreed to apply the SIOFA high seas boarding and inspection procedures between, (flag state of inspected Vessel) and (flag state of patrol vessel)”</i>		
1.6. <i>Do you agree to cooperate?</i>	Yes	No
1.7. <i>If yes, notify intent to board.</i>		

2. NOTIFY INTENT TO BOARD		
2.1. <i>“We must board to check the accuracy of your declarations. Do you accept that a visiting team of 4 inspectors maximum can come on board?”</i>	Yes	No (capture the reason)
<p>2.2. <i>If acceptance :</i></p> <p><i>“We will be sending over a boarding party in (five/fifteen/thirty) minutes; please assist them in getting onboard and by complying with all of their instructions.</i></p> <p><i>To assist our boarding party in boarding your vessel, could you please :</i></p> <ul style="list-style-type: none"> - <i>[stop your vessel] or [slow your vessel to ... knots], and</i> - <i>[continue your present course and speed] or [turn to (Port/Starboard)], and</i> - <i>Lower a ladder on the (Port/Starboard) side.</i> <p><i>To conduct this inspection in a timely manner, please make available to our boarding officer all of your vessel’s document.”</i></p>		
<p>2.3. <i>If opposition :</i></p> <p><i>“In the absence of cooperation, I shall immediately notify your flag Authorities and the Executive Secretary of the SIOFA of your refusal.</i></p> <p><i>In such case, and without an explanation of this refusal, your flag CCP might suspend your authorization to fish and request the vessel to return immediately to port.”</i></p>		

PART 2 : Conduct of the inspection

3. INTRODUCTION OF THE INSPECTION				
3.1. <i>“Good morning/ afternoon/ evening. Are you the master of the fishing vessel?”</i>				
3.2. <i>“I am an authorized SIOFA inspector, my name is.....</i> <i>Here is my identification. I am authorized to inspect your vessel for compliance with SIOFA conservation and management measures. This provides me and my party with the authority to board and inspect your vessel.”</i>				
3.3. <i>“I am using this questionnaire. Please slowly answer my questions and use yes or no whenever possible.”</i>				
3.4. Have you been informed of CMM 2019-14 by your flag State?			Yes	No
3.5. How many crew members and passengers on board ?				
3.6. Security team on board ?	Yes / No	3.7. Weapons on board ?	3.7.1. If yes, where are they located ?	No
3.8. Fishery observer on board ?			3.8.1. If yes, what is his/her name and nationality ?	No
3.9. <i>“I will use the High Sea Boarding and Inspection Report (hereinafter the Inspection report) to document my inspection of your vessel”.</i>				
3.10. <i>“Photographs may be taken as evidence to supplement the Inspection Report”.</i>				

4. IDENTIFICATION OF THE FISHING VESSEL
<p><i>“I request the following information regarding your vessel. Please show me your vessel’s equipment and documents, including valid fishing license/permit/authorization, certificate of nationality and any other documents that contain information about the fishing vessel.”</i></p> <p>Note to inspectors : If necessary because this information could not be acquired from the aforementioned documents, the following information can also be requested from the master.</p>
4.1. Type of fishing vessel ? / Fishing method ?

4.2. Position of the vessel at the time of boarding (by fishing master)? :	
a) Time (UTC) ?	
b) Latitude (Deg./Min.) ?	
c) Longitude (Deg./Min.) ?	
4.3. Equipment used in determining position (e.g. GPS) ?	
4.4. <i>“Please show me the passports or seaman book of the master, crewmembers and passengers so that I can fill in the inspection report and compare with the crew list.”</i>	
4.5. Length of the fishing vessel (meters) ?	4.6. Tonnage (GT or GTR) ?
4.7. IMO Number ? (if issued)	4.8. Maritime Mobile Service Identity (MMSI)? (if any)
4.9. IOTC number ? (if any)	4.10. Call sign ?(if any)
4.11. Port of registry?	4.12. Number of registration?
4.13. If different from the port of registry, what is the port marked on your vessel hull ?	
4.14. Name and address of the owner (natural person or legal entity) of your vessel?	
4.15. Name and address of your employer (natural or legal person) or whose interests you represent?	

5. ACTIVITY OF THE FISHING VESSEL						
<i>“I request the following information regarding your fishing activities.”</i>						
5.1. Do you carry a functioning vessel monitoring system (VMS) ?			Yes		No	
5.2. Type of activity when notified of intent to board ? (suggestions below)						
a) Steaming	b) Setting gear	c) Hauling gear	d) Towing gear	e) Stationary	f) Transhipping	g) Other
5.2.1. If other, description ?						

6. FISHING PERMIT / LICENCE / AUTHORIZATION
--

<i>"I request the following information regarding your fishing authorization(s). Please show me the relevant documents."</i>		
Note to inspectors : Request all fishing authorizations, not only SIOFA. If necessary, the following information can also be requested from the master.		
6.1. Do you currently own a valid fishing license / permit / authorization issued by the relevant Authorities?	Yes	No
6.2. License number?	6.3. Date of validity?	
6.4. Species authorized by license?		
6.5. Fishing area(s) authorized by license?		
6.6. Gears authorized by license?	6.6.1. For longlines: number of hooks per line ?	
6.7. Authority which issued the title (license / permit / authorization)?		

7. CATCH RETAINED ON BOARD		
7.1. <i>"Do you have sea products on board ? Please show me where you record this information (catch logs)."</i>	Yes	No
7.2. <i>"Please show me the following information regarding catch retained onboard."</i>		
7.2.1. Species (FAO code if possible) ?		
7.2.2. Processed weight?		
7.2.3. Processing type (FAO code if possible)		
7.2.4. Live weight?		
7.2.5. Conversion factor ?		
7.3. If catch samples are required : <i>"I will be taking samples of this catch for DNA analysis with the purpose of identifying species. This sample will not reduce the value of the catch."</i>		

8. TRANSHIPMENT

8.1. Transshipment(s) at sea since the last departure from last port ?	Yes	No
8.2. If yes :		
<i>"I require the following information on the carrier vessel(s), please show me the transshipment declaration(s) :"</i>		
8.2.1. Carrier vessel(s):	a) Name ?	b) Flag ?

9. RECORDS OF EFFORT, CATCH AND CATCH-RELATED DATA

9.1. Do you maintain records of effort, catch and catch-related data in accordance with SIOFA's reporting requirements?	Yes	No
9.2. Do you have any interaction with marine mammals or any accidental by-catch (including sharks and/or seabirds) to report ?	If yes, specify:	9.3. If applicable (longline): seabird bycatch mitigation / exclusion device ?
9.4. Type of catch recording ?	a) Paper	b) Electronic

PART 3 : Conclusion of the inspection

10. SUGGESTIONS FOR CONCLUDING STATEMENTS

Note to inspectors : The following are suggested concluding statements an inspector could make following completion of an inspection and provision of a boarding report/interim boarding report as per the requirements of CMM 2019/14. After inspectors fill in items 1 to 6c of the inspection report form (CMM 2019/14, Annex 1), inspectors could make the following statements and ask the following questions in order to complete the inspection report.

10.1. *Thank-you for your cooperation. The boarding and inspection report (Boarding and Inspection Reporting Form, Annex 1 of CMM 2019/14) includes observations by the*

<p><i>boarding party during this inspection. It will be shared with the authorities of the fishing vessel and the SIOFA Executive Secretary.</i></p>
<p>10.2. <i>Your documents and records indicate you are (in complete compliance/ not in complete compliance) with all SIOFA Conservation and Management Measures.</i></p>
<p>10.3. <i>This is the specific Conservation and Management Measure which you are not in compliance with.</i></p>
<p>10.4. <i>This (is/ is not) considered to be a serious violation. (Note to inspectors : refer to paragraph 41 of CMM 2019/14)</i></p>
<p>10.5. <i>I am photographing this item to document the violation.</i></p>
<p>10.6. <i>You may make a statement here (Section 6d of the boarding and inspection report) but you are not obliged to do so.</i></p>
<p>10.7. <i>You may choose to sign the boarding and inspection report (section 7 of the report) to acknowledge the inspection was completed.</i></p>
<p>10.8. <i>Your signature does not necessarily constitute acceptance of any part of the contents of the report.</i></p>
<p>10.9. <i>Please photocopy, scan or photograph the interim boarding and inspection report for your records.</i></p>
<p>10.10. <i>This is your copy of the interim boarding and inspection report.</i></p>
<p>10.11. <i>The boarding and inspection report will be provided to the Authorities of this vessel.</i></p>
<p>10.12. <i>Have you understood all you have read?</i></p>
<p>10.13. <i>We have completed the inspection of your vessel.</i></p>

Proposal for amendment on SIOFA CMM 2020/08 establishing a Port Inspection Scheme

1. for Para 6 in the preamble part:

The current text states:

“*BEARING IN MIND* that, in the exercise of their sovereignty over ports located in their territory, Contracting Parties, cooperating non-Contracting Parties and participating fishing entities may adopt more stringent measures, in accordance with international law;”

China propose to revise it as

“*BEARING IN MIND* that, in the exercise of their ~~sovereignty~~ authority over ports located in their ~~territory~~ jurisdiction, Contracting Parties, cooperating non-Contracting Parties and participating fishing entities may adopt more stringent measures, in accordance with international law;”

5th Compliance Committee of the Southern Indian Ocean Fisheries Agreement
(CC5)
01-03 July 2021 (online)

Provisional SIOFA IUU vessels list

Relates to agenda item: 5.1

Working paper Info paper

Abstract

The Compliance Committee amended the draft IUU vessels list to:

- Add vessel Mariam 1 on the provisional IUU vessel list (part 1).

The vessel El Shaddai has been maintained on the draft IUU vessels list.

The CC did not make recommendation to remove any vessels from the current IUU vessels list. The current SIOFA IUU list is displayed in part2 and the current IUU vessels cross-list in part 3.

Recommendations *(working papers only)*

The Meeting of the Parties to consider the SIOFA provisional IUU vessels list and to adopt the final SIOFA IUU vessels list.

Provisional SIOFA IUU vessels list (PART 1)

Vessel Name	PreviousNames	Flag	PreviousFlags	Callsign	iuuVIMOno	BeneficialOwner	Date	Suspected Activity	ref documentation	restricted file
Mariam 1		Mauritius		3B2179			2020-08-14	Engaged in fishing for fishery resources in the Agreement Area and are not on the SIOFA Record of Authorized Vessels	apsoi.org/meetings/cc4	Draft SIOFA IUU vessel - Mariam 1 rev2.pdf

PART 2 Current SIOFA IUU vessels list

Vessel Name	PreviousNames	Flag	PreviousFlags	Callsign	iuuIMO	BeneficialOwner	Date	Suspected Activity	ref documentation	restricted file
ABISHAK PUTHA 3		not known		4SFXXX	417000878		2020-08-14	Engaged in fishing for fishery resources in the Agreement Area and are not on the SIOFA Record of Authorized Vessels	apsoi.org/meetings/cc4	Draft SIOFA IUU vessel - Abishak Putha 3.pdf

PART 3 Current IUU cross-listed vessels

Name	Previous Names	Flag	Previous Flags	Callsign	IMOno	BeneficialOwner	Operator	Activities	CrossListing Date	Listing RFMOs
ABUNDANT 1	YI HONG 06	UNK/INC		CPA 226	UNK/INC	Huang Jia Yi,C/O Room 18-E Tze Wei Commercial Building, No.8 6 Th Road Lin Ya District, Kaohsiung, Taiwan, China	Mr. Hatto Daroi,UNK/INC	Contravention of IOTC Resolution 11/03/ Violation de la résolution de la CTOI 11/03	2021-04-05	ICCAT IOTC
ABUNDANT 12	YI HONG 106	UNK/INC		CPA 202	UNK/INC	Huang Jia Yi,C/O Room 18-E Tze Wei Commercial Building, No.8 6 Th Road Lin Ya District, Kaohsiung, Taiwan, China	Mr. Mendez Francisco Delos Reyes,UNK/INC	Contravention of IOTC Resolution 11/03/ Violation de la résolution de la CTOI 11/03	2021-04-05	ICCAT IOTC
ABUNDANT 3	YI HONG 16	UNK/INC		CPA 201	UNK/INC	Huang Jia Yi,C/O Room 18-E Tze Wei Commercial Building, No.8 6 Th Road Lin Ya District, Kaohsiung, Taiwan, China	Mr. Huang Wen Hsin,UNK/INC	Contravention of IOTC Resolution 11/03/ Violation de la résolution de la CTOI 11/03	2021-04-05	ICCAT IOTC
ABUNDANT 6	YI HONG 86	UNK/INC		CPA 221	UNK/INC	Huang Jia Yi,C/O Room 18-E Tze Wei Commercial Building, No.8 6 Th Road Lin Ya District, Kaohsiung, Taiwan, China	Mr. Huang Wen Hsin,UNK/INC	Contravention of IOTC Resolution 11/03/ Violation de la résolution de la CTOI 11/03	2021-04-05	ICCAT IOTC
ABUNDANT 9	YI HONG 116	UNK/INC		CPA 222	UNK/INC	Huang Jia Yi,C/O Room 18-E Tze Wei Commercial Building, No.8 6 Th Road Lin Ya District, Kaohsiung, Taiwan, China	Mr. Pan Chao Mao,UNK/INC	Contravention of IOTC Resolution 11/03/ Violation de la résolution de la CTOI 11/03	2021-04-05	ICCAT IOTC
Acros No 2		Unknown	Honduras						2020-08-11	GFCM ICCAT IOTC
Acros No 3		Unknown	Honduras						2020-08-11	GFCM ICCAT IOTC

AL WESAM 5	CHAINAVEE 54	UNK/INC	DJIBOUTI, THAILAND	UNK/INC (HSN5447)	UNK/INC	UNK/INC (MARINE RENOWN SARL), UNK/INC		Contravention of IOTC Resolution 17/03/ Violation de la résolution de la CTOI 17/03	2020-08-12	ICCAT IOTC
Al'Amir Muhammad		Egypt							2020-08-11	GFCM IOTC
Alboran II	White enterprise [NAFO/NEAFC] / White, Enterprise, Enxembre, Atalaya, Reda IV, Atalaya Del Sur [SEAFO]	Unknown	Panama, St. Kitts & Nevis	Unknown	7306570		Unknown	Last known location: Gibraltar Port (31 March 2009)	2020-08-11	GFCM ICCAT IOTC NAFO NEAFC SEAFO
Amorinn	Iceberg II, Noemi, Lome	Unknown	Togo, Belize	SVAN9	7036345	Unknown	Unknown (Infitco Ltd Ocean Star Maritime CO, Seric Business S.A.)	Sighted 58.5.1 (11 Oct 2003), Sighted 58.4.2 (23 Jan 2004)	2020-08-11	CCAMLR GFCM ICCAT IOTC SEAFO
ANEKA 228		UNK/INC		UNK/INC	UNK/INC			Contravention of IOTC Resolution 11/03/ Violation de la résolution de la CTOI 11/03	2020-08-12	ICCAT IOTC
ANEKA 228; KM.		UNK/INC		UNK/INC	UNK/INC			Contravention of IOTC Resolution 11/03/ Violation de la résolution de la CTOI 11/03	2020-08-12	ICCAT IOTC
Antony	Urgora, Atlantic Oji Maru No. 33 -Oji Maru No. 33	Unknown	Venezuela, Honduras, Panama, Belize, Indonesia	PQMG	7236634		Atlanti Pez, (Urgora S de RL), (World Ocean Fishing SL)	Supporting IUU-listed vessel (3 March 2016)	2020-08-12	CCAMLR ICCAT IOTC SEAFO
Asian Warrior	Kunlun, Taishan, Chang Bai, Hongshui, Huang He 22, Sima Qian Baru 22, Corvus, Galaxy, Ina Maka, Black Moon, Red Moon, Eolo, Thule, Magnus, Dorita [CCAMLR/IOTC]	Saint Vincent and the Grenadines [CCAMLR]	Indonesia, Tanzania, Korea DPRK, Panama, Sierra Leone, Equatorial Guinea, Uruguay	J8B5336, 3CAG	7322897	Stanley Management Inc, UNK/INC	High Mountain Overseas S.A., (Navalmar S.A.), (Meteora Development Inc), (Vidal Armadores S.A.), (Rajan Corporation), (Rep Line Ventures S.A.), (Stanley	Sighted 58.5.2 (31 Jan 2004), Sighted 58.5.1 (10 May 2006), Sighted 58.4.1 (21 Jan 2010), Sighted 58.4.1 (13 Feb 2011), Towing Baiyangdian 57 (01 Apr 2012), Sighted 58.6 (01 Jul 2012), Sighted 58.4.2 (28 Jan 2013),	2020-08-11	ICCAT SEAFO

Atlantic Wind	Zemour 2, Luampa, Yongding, Jiangfeng, Chengdu, Shaanxi Henan 33, Xiong Nu Baru 33, Draco I, Liberty, Chilbo San 33, Hammer, Seo Yang No. 88, Carran [CCAMLR]	Unknown	Tanzania, Equatorial Guinea, Indonesia, Cambodia, Panama, Sierra Leone, Korea (DPRK), Togo, Uruguay	5IM813, 3CAE	9042001	High Mountain Overseas SA (Viarsa Fishing Company/Navalmar S.A., Global Intercontinental Services, Rajan Corporation, Redlines Ventures S.A.)	High Mountain Overseas S.A., UNK/INC	Undocumented landing Malaysia (01 Aug 2004), Fishing 58.4.3a (22 Feb 2005), Fishing 58.4.3a (28 Apr 2005), Fishing 58.4.3b (16 Dec 2005), Fishing 58.4.3b (01 Jul 2009), Fishing 58.4.2 (27 Jan 2010), Fishing 58.4.3b (04 Apr 2010),	2020-08-11	SEAFO
Baroon	Lana, Zeus, Triton-1 [CCAMLR]	Unknown	Nigeria, Mongolia, Togo, Sierra Leone, Tanzania	5IM376	9037537	Vero Shipping Corporation (Punta Brava Fishing S.A.)		Fishing 58.4.1 (19 Mar 2007), Sighted 88.1 (15 Jan 2008), Sighted 57 (19 Dec 2010), Sighted 57 (05 Oct 2012), Sighted 57 (24 Mar 2013), Sighted 57 (03 Sep 2013), Sighted 57 (19 Nov 2013), Sighted 57 (14 Feb 2014)	2020-08-11	CCAMLR GFCM ICCAT IOTC SEAFO
Bhaskara No 10		Unknown							2020-08-11	GFCM IATTC ICCAT IOTC
Bhaskara No 9		Unknown							2020-08-11	GFCM IATTC ICCAT IOTC
Bigeye		Unknown							2020-08-11	GFCM ICCAT IOTC
Bravo		Unknown							2020-08-11	GFCM ICCAT IOTC
Camelot		Unknown							2020-08-11	GFCM IATTC ICCAT IOTC
Challenge	Mila, Perserverance [CCAMLR] / Mila, Isla, Montana Clara, Perseverance [SEAFO]	Unknown	Panama, Equatorial Guinea, United Kingdom	HO5381	6622642	Advantage Company S.A. (rion Ltd, Vidal Armadores S.A., Mar de Neptuno S.A., Argibay Perez J.A.)		Sighted 58.4.3b (14 Feb 2006), Sighted 58.4.3b (22 May 2006), Sighted 58.4.3b (10 Dec 2006), Sighted 58.4.3b (08 Feb 2008)	2020-08-11	CCAMLR GFCM ICCAT IOTC SEAFO

CHI TONG		UNK/INC		UNK/INC	UNK/INC			Contravention of IOTC Resolution 11/03/ Violation de la résolution de la CTOI 11/03	2020-08-12	ICCAT IOTC
Chia Hao No 66		Unknown							2020-08-11	GFCM IATTC IOTC
CHOTCHAINAVEE 35	CARRAN	UNK/INC	DJIBOUTI	UNK/INC	UNK/INC	GREEN LAUREL INTERNATIONAL SARL,UNK/INC	MASTER/PATRON: Mr PRAWIT KERDSUWAN,UNK/INC	Engaged in fishing or fishing related activities in waters of a coastal State without permission or authorisation./S'est engage dans la pêche ou des activités liées à la pêche dans des eaux d'un État côtier sans la permission ou	2020-08-12	IOTC
Cobija	Cape Flower, Cape Wrath II	Unknown	Bolivia 04/2014, Sao Tome and Principe 01/2014, Unknown 06/2013, South Africa 04/1998, Canada 11/1973	CPB3000	7330399		Unknown, Express Financial Ventures Group Inc	Fishing inside FAO Area 47 in 2016. Investigation initiated by Ecuadorian Fisheries Authority Boarded in the High Seas of Indians Ocean (15°05'1.20"S and 088°28'24.66"E) by Australia on 18	2019-06-17	SEAFO
Daniaa	Carlos	Unknown							2020-08-11	GFCM ICCAT IOTC
Dragon III		Unknown							2020-08-11	GFCM IATTC ICCAT IOTC
Eros Dos	Furabolos	Unknown	Panama, Seychelles	Unknown (HO-5115, S7KC)	8604668		Unknown	Burned on 7 Nov 2018, last known location: St. Eugenia de Ribeira, Spain (05 March 2009)	2020-08-11	GFCM ICCAT IOTC NAFO NEAFC SEAFO
Fu Hsiang Fa		Unknown							2020-08-11	GFCM IOTC

FU HSIANG FA 18		UNK/INC		UNK/INC	UNK/INC			Contravention of IOTC Resolution 11/03/ Violation de la résolution de la CTOI 11/03	2020-08-12	ICCAT IOTC
FU HSIANG FA NO. 01		UNK/INC		UNK/INC	UNK/INC			Contravention of IOTC Resolution 11/03/ Violation de la résolution de la CTOI 11/03	2020-08-12	ICCAT IOTC
FU HSIANG FA NO. 02		UNK/INC		UNK/INC	UNK/INC			Contravention of IOTC Resolution 11/03/ Violation de la résolution de la CTOI 11/03	2020-08-12	ICCAT IOTC
FU HSIANG FA NO. 06		UNK/INC		UNK/INC	UNK/INC			Contravention of IOTC Resolution 11/03/ Violation de la résolution de la CTOI 11/03	2020-08-12	ICCAT IOTC
FU HSIANG FA NO. 08		UNK/INC		UNK/INC	UNK/INC			Contravention of IOTC Resolution 11/03/ Violation de la résolution de la CTOI 11/03	2020-08-12	ICCAT IOTC
FU HSIANG FA NO. 09		UNK/INC		UNK/INC	UNK/INC			Contravention of IOTC Resolution 11/03/ Violation de la résolution de la CTOI 11/03	2020-08-12	ICCAT IOTC
FU HSIANG FA NO. 11		UNK/INC		UNK/INC	UNK/INC			Contravention of IOTC Resolution 11/03/ Violation de la résolution de la CTOI 11/03	2020-08-12	ICCAT IOTC
FU HSIANG FA NO. 13		UNK/INC		UNK/INC	UNK/INC			Contravention of IOTC Resolution 11/03/ Violation de la résolution de la CTOI 11/03	2020-08-12	ICCAT IOTC

FU HSIANG FA NO. 17		UNK/INC		UNK/INC	UNK/INC			Contravention of IOTC Resolution 11/03/ Violation de la résolution de la CTOI 11/03	2020-08-12	ICCAT IOTC
FU HSIANG FA NO. 20		UNK/INC		UNK/INC	UNK/INC			Contravention of IOTC Resolution 11/03/ Violation de la résolution de la CTOI 11/03	2020-08-12	ICCAT IOTC
FU HSIANG FA NO. 21a		UNK/INC		OTS 024 or OTS 089	UNK/INC			Contravention of IOTC Resolution 07/02/ Violation de la résolution de la CTOI 07/02	2020-08-12	IOTC
FU HSIANG FA NO. 21b		UNK/INC		UNK/INC	UNK/INC			Contravention of IOTC Resolution 11/03/ Violation de la résolution de la CTOI 11/03	2020-08-12	IOTC
FU HSIANG FA NO. 23		UNK/INC		UNK/INC	UNK/INC			Contravention of IOTC Resolution 11/03/ Violation de la résolution de la CTOI 11/03	2020-08-12	ICCAT IOTC
FU HSIANG FA NO. 26		UNK/INC		UNK/INC	UNK/INC			Contravention of IOTC Resolution 11/03/ Violation de la résolution de la CTOI 11/03	2020-08-12	ICCAT IOTC
FU HSIANG FA NO. 30		UNK/INC		UNK/INC	UNK/INC			Contravention of IOTC Resolution 11/03/ Violation de la résolution de la CTOI 11/03	2020-08-12	ICCAT IOTC
Fu Lien No 1		Unknown			7355662				2020-08-11	GFCM ICCAT IOTC

Full Rich		Unknown	BELIZE	HMEK3		Noel International LTD (Noel International LTD),UNK/INC		Contravention of IOTC Resolution 07/02/Violation de la résolution de la CTOI 07/02	2020-08-11	GFCM ICCAT IOTC
Gala I	Manara II/Roagan	Unknown							2020-08-11	GFCM ICCAT IOTC
Goidau Ruey No 1		Unknown							2020-08-11	GFCM IATTC ICCAT IOTC
Good Hope	Toto, Sea Ranger V	Nigeria		5NMU	7020126	Port Plus Ltd (Sharks Investments AVV)		Resupplying IUU vessels Area 51 (09 Feb 2007)	2020-08-11	CCAMLR GFCM ICCAT IOTC SEAFO
Gorilero	Gran Sol	Unknown	Sierra Leone, Panama [NAFO/NEAFC]	Unknown (9LYF36, H03738)	6719419		Unknown	Last known location: La Coruna, Spain (September 2007)	2020-08-11	GFCM ICCAT IOTC NAFO NEAFC SEAFO
Gunuar Melyan 21		Unknown						Contravention of IOTC Resolution 07/02/ Violation de la résolution de la CTOI 07/02	2020-08-11	GFCM ICCAT IOTC
HAI DA 705		Unknown		Not known	Not known	Not known	Not known	Communications between Japanese Patrol vessel and HAI DA705 at 43 10.4'N, 153 38.6'E on 11 Sep 2016 indicated they caught squid with drift net in the high sea. (Port displayed on the vessel: 沈家们);	2020-08-12	NPFC
HALELUYA		Unknown		5IM615		Imanel SAS / NIT: 900076756 / N° de Registry: 21591712 / État: Actif, Barrio Bosque Transversal 52, No 21A-62, Cartagena, de Indias, Bolivia	Imanel SAS / NIT: 900076756 / N° de Registry: 21591712 / État: Actif	EU : suspects this vessel, without nationality, may be engaging in fishing activities in ICCAT Convention Area. Believed by Environmental Justice Foundation (EJF) to be flagged or previously flagged to Tanzania (See Doc. COC-	2021-04-05	ICCAT

Heavy Sea	Duero, Julius, Keta, Sherpa Uno	Unknown	Panama, Saint Kitts and Nevis, Belize	3ENF8	7322926		C&S Fisheries S.A. (Muner S.A., Meteroros Shipping, Meteora Shipping Inc., Barroso Fish S.A.)	Sighted 58.5.1 (03 Feb 2004), Fishing 57 (29 Jul 2005)	2020-08-11	CCAMLR GFCM ICCAT IOTC SEAFO
HOOM XIANG 101		UNK/INC	MALAYSIA	UNK/INC	UNK/INC			Contravention of IOTC Resolution 11/03/ Violation de la résolution de la CTOI 11/03	2020-08-12	ICCAT IOTC
HOOM XIANG 103		UNK/INC	MALAYSIA	UNK/INC	UNK/INC			Contravention of IOTC Resolution 11/03/ Violation de la résolution de la CTOI 11/03	2020-08-12	ICCAT IOTC
HOOM XIANG 105		UNK/INC	MALAYSIA	UNK/INC	UNK/INC			Contravention of IOTC Resolution 11/03/ Violation de la résolution de la CTOI 11/03	2020-08-12	ICCAT IOTC
Hoom Xiang II		Unknown	MALAYSIA	UNK/INC	UNK/INC	Bhd),UNK/INC (MALAYSIAN INTERNATIONAL TUNA PORT, 11960 BATU MAUNG PULAU, PINANG)		Contravention of IOTC Resolution 09/03/ Violation de la résolution de la CTOI 09/03	2020-08-11	GFCM ICCAT IOTC
Iannis I	Moana Mar, Canos De Meca	Unknown	Panama	HO3374	7332218		Unknown	Last known location: Indian Ocean (2007)	2020-08-11	GFCM ICCAT IOTC NAFO NEAFC SEAFO
Jinzhang	Hai Lung, Yele, Ray, Kily, Constant, Tropic, Isla Graciosa	Unknown	Belize, Mongolia, Equatorial Guinea, South Africa [CCAMLR] / Belize [SEAFO]	PQBT	6607666		Arniston Fish Processors (Pty) Ltd, (Vidal Armadores S.A.), (Nalanza S.A.), (Argibay Perez J.A.), (Belfast Global S.A.), (Etterna Ship Management)	Fishing inside Division A (2012), Fishing 58.4.3b (23 May 2006), Fishing 58.4.2 (18 Feb 2007), Fishing 58.4.3b (24 Mar 2007), Fishing 58.4.3b (12 Jan 2008), Fishing 58.4.3b (09 Jan 2009), Fishing 58.4.3b (20 Jan 2009)	2021-04-05	CCAMLR GFCM SEAFO
Jyi Lih 88		Unknown							2020-08-11	GFCM IATTC ICCAT IOTC

KIM SENG DENG 3		UNK/INC		UNK/INC	UNK/INC				Contravention of IOTC Resolution 11/03/ Violation de la résolution de la CTOI 11/03	2020-08-12	ICCAT IOTC
Koosha 4	Eguzkia	Iran, Islamic Republic of		9BQK	7905443		Pars Paya Seyd Industrial Fish	Inside Division 58.4.1 (15 Feb 2011)		2020-08-11	CCAMLR GFCM ICCAT IOTC SEAFO
KUANG HSING 127		UNK/INC		UNK/INC	UNK/INC				Contravention of IOTC Resolution 11/03/ Violation de la résolution de la CTOI 11/03	2020-08-12	ICCAT IOTC
KUANG HSING 196		UNK/INC		UNK/INC	UNK/INC				Contravention of IOTC Resolution 11/03/ Violation de la résolution de la CTOI 11/03	2020-08-12	ICCAT IOTC
Labiko	Maine, Claude Monier, Chevalier d'Assas [SEAFO]	Unknown	Guinea Conakry	3XL2	7325746				Last known location: NEAFC RA (29 oct 2007)	2020-08-11	GFCM ICCAT IOTC NAFO NEAFC
LIAO YUAN YU 071		Unknown		Not known	Not known	Not known	Not known	Not known	It was seen at 42 15.4'N, 153 22.8'E on 23 Aug 2016. When the Japanese patrol vessel approached, a vessel crew tried to hide the vessel name. Communication between the Japanese patrol vessel and LIAO YUAN YU 071	2020-08-11	IOTC NPFC
LIAO YUAN YU 072		Unknown		Not known	Not known	Not known	Not known	Not known	It was seen at 42 18.7'N, 153 27.9'E on 23 Aug and at 42 9.2'N, 151 16.4'E on 11 Oct 2016. Vessel name was hidden by paint. (Port displayed on the vessel: Shidao; Vessel type; Lighted lift net vessel; Tonnage: 800t)	2020-08-11	IOTC NPFC
LIAO YUAN YU 9		Unknown		Not known	Not known	Not known	Not known	Not known	It was seen at 42 3.0'N, 153 0.8'E on 23 Aug and at 42 10.0'N, 151 16.8'E on 11 Oct 2016. Vessel name was hidden by paint. (Port displayed on the vessel: Shidao; Vessel type; Lighted lift net vessel; Tonnage: 800t)	2020-08-11	NPFC

Lila No 10		Unknown	Panama						2020-08-11	GFCM ICCAT IOTC
Limpopo	Ross, Alos, Lena, Cap George, Conbaroya, Tercero [SEAFO] / Lena, Alos, Ross [CCAMLR]	Unknown	Togo, Ghana, Seychelles, France	Unknown	7388267		Grupo Oya Perez (Kang Brothers, Lena Enterprises Ltd, Alos Company Ghana Ltd)	Fishing 58.5.2 (21 Sep 2003), Sighted 58.5.1 (03 Dec 2003), Fishing 58.4.3b (23 Feb 2005), Fishing 58.4.3b (14 Dec 2005), Sighted 58.4.3b (25 Jan 2007)	2020-08-11	CCAMLR GFCM ICCAT IOTC SEAFO
LU RONG SHUI 158 (鲁荣水158)		Unknown		Not known	Not known		Not known	A Japanese patrol vessel sighted this fishing vessel in the Convention area at 39°59.2'N, 147°39.7'E on July 7, 2018. There is no vessel registration of this vessel on the NPFC vessel register. MMSI 4126888540	2020-08-11	NPFC
LU RONG YU 1189		Unknown		Not known	Not known	Not known	Not known	It was seen at 41 24.9'N, 140 32.7'E (Japan EEZ) on 14 Jun 2016. (Port displayed on the vessel: Shidao; Vessel type: Carrier vessel; Tonnage: 100t) MMSI: 412321992	2020-08-11	IOTC NPFC
LU RONG YU 612		Unknown		Not known	Not known	Not known	Not known	A Japanese patrol vessel sighted this fishing vessel was drifting in the Convention area at 39 50.00'N, 147 1.8'E on July 21. The port of registry is Shidao and AIS information showed that the vessel name is "Lu Long Yuan Yu	2020-08-11	IOTC NPFC
LU RONG YUAN YU 101		Unknown		Not known	Not known	Not known	Not known	While LU RONG YUAN YU 101 is registered as a light PS vessel in the NPFC list, the identical name with different vessel types were seen. LU RONG YUAN YU 101 with lift net type was seen at 49 9.2'N, 149 19.5'E on 17 May 2016. LU	2020-08-11	IOTC NPFC
LU RONG YUAN YU 102		Unknown		Not known	Not known	Not known	Not known	While LU RONG YUAN YU 102 is registered as one light PS vessel in the NPFC list, the identical name with different vessel types were seen. LU RONG YUAN YU 102 with lift net type was seen at 42° 21.3'N, 151° 55.5'E on 11 Oct 2016. LU	2020-08-11	IOTC NPFC
LU RONG YUAN YU 103		Unknown		Not known	Not known	Not known	Not known	While LU RONG YUAN YU 103 is registered as one light PS vessel in the NPFC list, the identical name with different vessel types were seen. LU RONG YUAN YU 103 with lift net type was seen at 40 25.9'N, 150 9.9'E on 1 June	2020-08-11	IOTC NPFC

LU RONG YUAN YU 105		Unknown		Not known	Not known	Not known	Not known	While LU RONG YUAN YU 105 is registered as one light PS vessel in the NPFC list, the identical name with different vessel types were seen. LU RONG YUAN YU 105 with lift net type was seen at 42°27'N, 152° 5.8'E on 11 Oct 2016.LU	2020-08-11	IOTC NPFC
LU RONG YUAN YU 106		Unknown		Not known	Not known	Not known	Not known	While LU RONG YUAN YU 106 is registered as one light PS vessel in the NPFC list, the identical name with different vessel types were seen. LU RONG YUAN YU 106 with lift net type was seen at 40 30.4'N, 149	2020-08-11	IOTC NPFC
LU RONG YUAN YU 108		Unknown		Not known	Not known	Not known	Not known	While LU RONG YUAN YU 108 is registered as one light PS vessel in the NPFC list, the identical name with different vessel types were seen. LU RONG YUAN YU 108 with lift net type was seen at 40 28.4'N, 149 28.1'E on 29 May	2020-08-11	IOTC NPFC
LU RONG YUAN YU 109		Unknown		Not known	Not known	Not known	Not known	While LU RONG YUAN YU 109 is registered as one light PS vessel in the NPFC list, the identical name with different vessel types were seen. LU RONG YUAN YU 109 with lift net type was seen at 40 25.1'N, 149 25 'E on 29 May	2020-08-11	IOTC NPFC
LU RONG YUAN YU 787		Unknown		Not known	Not known	Not known	Not known	A Japanese patrol vessel sighted this fishing vessel was drifting in the Convention area at 39 49.7'N, 147 2.8'E on July 21 2017, and Japanese patrol aircraft sighted the same vessel anchored at 41 3.3'N, 150 22.1'E on August 2 2017. The	2020-08-11	IOTC NPFC
LU RONG YUAN YU 797		Unknown		Not known	Not known	Not known	Not known	A Japanese patrol aircraft sighted this fishing vessel in the Convention area was operating at 42 7.1'N, 151 40.9'E on July 7 2017. China flag was raised and "CHINA" was painted on the vessel	2020-08-11	IOTC NPFC
LU RONG YUAN YU YUN 958		Unknown		Not known	Not known	Not known	Not known	A Japanese patrol fishing vessel sighted this fishing vessel was drifting in the Convention area at 39 50.9'N, 147 4.3'E on July 21. The vessel raised China flag and the port of registry was Shidao.	2020-08-11	IOTC NPFC
MAAN YIH HSING		UNK/INC		UNK/INC	UNK/INC			Contravention of IOTC Resolution 11/03/ Violation de la résolution de la CTOI 11/03	2020-08-12	ICCAT IOTC

Madura 2		Unknown							2020-08-11	GFCM ICCAT IOTC
Madura 3		Unknown							2020-08-11	GFCM ICCAT IOTC
Maria		Unknown							2020-08-11	GFCM ICCAT IOTC
MARIO 11		Senegal		6WMR		HSIN FEI Trading Investment Co. Ltd	HSIN FEI Trading Investment Co. Ltd	USA: the U.S. Coast Guard observed approximately 250 shark fins strung from lines throughout the vessel's decks. (former ICCAT Register Number: AT000SENO0031)	2021-04-05	ICCAT
MARWAN 1	AL WESAM 4,CHAICHANACHOKE 8	SOMALIA	DJIBOUTI, THAILAND/THAILANDE	UNK/INC (HSN5721)	UNK/INC	SOMLINK FISHERIES INVESTMENT (MARINE RENOWN SARL),UNK/INC		Contravention of IOTC Resolution 17/03/ Violation de la résolution de la CTOI 17/03	2020-08-12	ICCAT IOTC
Melilla No 101		Unknown	Panama						2020-08-11	GFCM ICCAT IOTC
Melilla No 103		Unknown	Panama						2020-08-11	GFCM ICCAT IOTC
Murtosa	Unknown	Unknown	Togo [NAFO/NEAFC]	Unknown (ZDBLI)	7385174		Aveiro, Portugal (since 2005)	Last known location: Aveiro, Portugal	2020-08-11	GFCM ICCAT IOTC NAFO NEAFC SEAFO

Neptune		Unknown	Georgia						2020-08-11	GFCM IATTC ICCAT IOTC
New Bai I No. 168	Tai Yuan No. 227	Liberia							2020-08-11	GFCM ICCAT IOTC
NIKA		Panama		HP6686	8808654	Jiho Shipping Ltd		Fishing without authorisation (08 Jun 2019)	2020-12-31	CCAMLR
No 101 Gloria	Golden Lake	Unknown	Panama						2020-08-11	GFCM IOTC
No 2 Choyu		Unknown	Honduras						2020-08-11	GFCM ICCAT IOTC
No 3 Choyu		Unknown	Honduras						2020-08-11	GFCM ICCAT IOTC
Northern Warrior	Millennium, Sip 3	Angola	Curacao, Netherlands Antilles, South Africa, Belize, Morocco	PJSA	8808903		SIP (Areapesca S.A., Southern Trading Group, Snoek Wholesalers, South Atlantic Fishing NV, World Ocean Fishing SL, Orkiz Agro-Pecuaría - Pescas Transportes E	Supporting IUU-listed vessels (03 Mar 2016)	2020-08-12	CCAMLR ICCAT IOTC SEAFO
NPFC 29 Unknown 2021-01		Unknown		Unknown		Unknown	Unknown	A Japanese trawl vessel sighted this fishing vessel indicating its vessel name "ZHOU YU 808" MMSI 412671880, in the Koko seamount area of Convention area at 36°44'N, 171°27'E on August 29, 2018, allegedly conducted fishing	2020-08-11	NPFC

NPFC 30 Unknown 2021-02		Unknown		Unknown		Unknown	Unknown	A Japanese trawl vessel sighted this fishing vessel indicating its vessel name "ZHOU YU 809" MMSI 412401260, in the Koko seamount area of Convention area at 36°44'N, 171°27'E on August 29, 2018, allegedly conducted fishing	2020-08-11	NPFC
NPFC 34-unknown 2021-3								Violation of CMM2019-01(para5). A Japanese patrol vessel sighted this fishing vessel displaying the name LU RONGYUAN YU 581鲁荣远渔 581 in the Convention area at 41°11.6'N, 174°17.7'W on July 15, 2020.	2021-05-03	NPFC
NPFC-35 Unknown 2021-4								Violation of CMM2019-01(para5). A Japanese patrol vessel sighted this fishing vessel displaying the name LU RONG YUAN YU 582鲁荣远渔582 in the Convention area at 41°11.4'N, 174°22.9'W on July 15, 2020. This	2021-05-03	NPFC
NPFC-36 unknown 2021-5								Violation of CMM2019-01(para5). A Japanese patrol vessel sighted this fishing vessel displaying the name LU RONG YUAN YU 197鲁荣远渔197 in the Convention area at 41°11.3'N, 174°20.3'W on July 15, 2020.	2021-05-03	NPFC
Ocean Diamond		Unknown							2020-08-11	GFCM ICCAT IOTC
OCEAN STAR No 2		Unknown		YJRU6		Ming Shun Fishery Co LTD, Port Vila, Vanuatu	Ming Shun Fishery Co LTD	(Vanuatu (2016) / Bolivia (2012)(former ICCAT Register Number: AT000VUT00017). USA: sighting of tuna longline vessel in the Convention Area; not on ICCAT Record of Vessels; No valid Flag. Communicated via radio, vessel	2021-04-05	ICCAT
Orca		Unknown	Belize						2020-08-11	GFCM ICCAT IOTC
Oriente No 7		Unknown	Honduras						2020-08-11	GFCM ICCAT IOTC

Perlon	Cherne, Sargo, Hoking, Bigaro, Lugalpesca	Unknown	Mongolia, Togo, Uruguay	5NTV21	5062479		Vakin S.A. (Jose Lorenzo SL, Americagalaica S.A.)	Sighted 58.5.1 (03 Dec 2002), Sighted 58.5.1 (04 Jun 2003), Sighted 58.4.2 (22 Jan 2004), Sighted 58.4.3b (11 Dec 2005), Fishing 58.4.1 (26 Jan 2006), Sighted 58.4.3b (07 Dec 2006), Sighted 58.4.1 (30 Dec 2006),	2020-08-11	CCAMLR GFCM ICCAT IOTC SEAFO
Pescacisne 1, Pescacisne 2	Zemour 1, Kadei, Songhua, Yunnan, Nihewan, Huiquan, Wutaishan Anhui 44, Yangzi Hua 44, Trosky, Paloma V [CCAMLR]	Unknown	Mauritania, Equatorial Guinea, Indonesia, Tanzania, Mongolia, Cambodia, Namibia, Uruguay	9LU2119	9319856	Eastern Holdings, UNK/INC	Mabenal S.A. (Vidal Armadores S.A., Omunkete Fishing Pty Ltd, Gongola Fishing JV (Pty) Ltd, Eastern Holdings)	Supporting activities of IUU vessels 51 (16 May 2008), Sighted 58.4.3b (22 Apr 2009), Sighted 57 (07 Dec 2009), Fishing 58.4.1 (07 Apr 2010), Sighted 58.4.1 (29 Jan 2012), Sighted 58.4.1 (30 Jan 2012), Sighted 58.4.1 (31 Jan 2012), Sighted 58.4.1 (31 Jan 2012),	2020-08-11	ICCAT SEAFO
Reymar 6		Unknown	Belize						2020-08-11	GFCM IATTC ICCAT IOTC
SAGE		Gambia		C5J82		Song Maw Fishery S.A., Calle 78E Casa No. 30 Loma alegre, San Francisco, Panamá	Song Maw Fishery S.A.	ref. IATTC	2021-04-05	ICCAT
Samudera Pasifik No. 18		Indonesia						Contravention of IOTC Resolution 11/03/ Violation de la résolution de la CTOI 11/03	2020-08-11	GFCM ICCAT IOTC
SAMUDERA PERKASA 11		UNK/INC		UNK/INC	UNK/INC			Contravention of IOTC Resolution 11/03/ Violation de la résolution de la CTOI 11/03	2020-08-12	ICCAT IOTC
SAMUDRA PERKASA 12		UNK/INC		UNK/INC	UNK/INC			Contravention of IOTC Resolution 11/03/ Violation de la résolution de la CTOI 11/03	2020-08-12	ICCAT IOTC
Sea Urchin	Aldabra, Omoa I	Gambia	Tanzania, Honduras	5VAA2	7424891		Cecibell Securities (Farway Shipping)	Fishing inside Division 58.4.4b (10 Nov 2006)	2020-08-11	CCAMLR GFCM ICCAT IOTC SEAFO

SEA VIEW	AL WESAM 2, CHAINAVEE 55	CAMEROON	DJIBOUTI, THAILAND/THAILANDE	UNK/INC (HSB3852)	8692342	UNK/INC (MARINE RENOWN SARL),UNK/INC		Contravention of IOTC Resolution 17/03/ Violation de la résolution de la CTOI 17/03	2020-08-12	ICCAT IOTC
SEA WIND	AL WESAM 1, SUPPHERMNAVEE 21	CAMEROON	DJIBOUTI, THAILAND/THAILANDE	UNK/INC (HSN5282)	8692354	UNK/INC (MARINE RENOWN SARL),UNK/INC		Contravention of IOTC Resolution 17/03/ Violation de la résolution de la CTOI 17/03	2020-08-12	ICCAT IOTC
Sharon 1	Manara I/Poseidon	Unknown	Libya						2020-08-11	GFCM ICCAT IOTC
SHENG JI QUN 3		UNK/INC		CPA 311	UNK/INC	Chang Lin, Pao-Chun,No. 161, San Min Rd. Yufu Village, Kaohsiung City, Taiwan, China	Mr. Chen, Chen- Tsai,UNK/INC	Contravention of IOTC Resolution 11/03/ Violation de la résolution de la CTOI 11/03	2020-08-12	ICCAT IOTC
SHUEN SIANG		UNK/INC		UNK/INC	UNK/INC			Contravention of IOTC Resolution 11/03/ Violation de la résolution de la CTOI 11/03	2020-08-12	ICCAT IOTC
SHUN LAI	HSIN JYI WANG NO. 6	UNK/INC		CPA 514	UNK/INC	Lee Cheng Chung,No. 5 Tze Wei Road, Kaohsiung, Taiwan, China	Mr. Sun Han Min,UNK/INC	Contravention of IOTC Resolution 11/03/ Violation de la résolution de la CTOI 11/03	2020-08-12	ICCAT IOTC
SIN SHUN FA 6		UNK/INC		UNK/INC	UNK/INC			Contravention of IOTC Resolution 11/03/ Violation de la résolution de la CTOI 11/03	2020-08-12	ICCAT IOTC
SIN SHUN FA 67		UNK/INC		UNK/INC	UNK/INC			Contravention of IOTC Resolution 11/03/ Violation de la résolution de la CTOI 11/03	2020-08-12	ICCAT IOTC

SIN SHUN FA 8		UNK/INC		UNK/INC	UNK/INC			Contravention of IOTC Resolution 11/03/ Violation de la résolution de la CTOI 11/03	2020-08-12	ICCAT IOTC
SIN SHUN FA 9		UNK/INC		UNK/INC	UNK/INC			Contravention of IOTC Resolution 11/03/ Violation de la résolution de la CTOI 11/03	2020-08-12	ICCAT IOTC
Southern Star 136	Hsiang Chang	Unknown	St. Vincent and the Grenadines						2020-08-11	GFCM ICCAT IOTC
SRI FU FA 168		UNK/INC		UNK/INC	UNK/INC			Contravention of IOTC Resolution 11/03/ Violation de la résolution de la CTOI 11/03	2020-08-12	ICCAT IOTC
SRI FU FA 18		UNK/INC		UNK/INC	UNK/INC			Contravention of IOTC Resolution 11/03/ Violation de la résolution de la CTOI 11/03	2020-08-12	ICCAT IOTC
SRI FU FA 188		UNK/INC		UNK/INC	UNK/INC			Contravention of IOTC Resolution 11/03/ Violation de la résolution de la CTOI 11/03	2020-08-12	ICCAT IOTC
SRI FU FA 189		UNK/INC		UNK/INC	UNK/INC			Contravention of IOTC Resolution 11/03/ Violation de la résolution de la CTOI 11/03	2020-08-12	ICCAT IOTC
SRI FU FA 286		UNK/INC		UNK/INC	UNK/INC			Contravention of IOTC Resolution 11/03/ Violation de la résolution de la CTOI 11/03	2020-08-12	ICCAT IOTC

SRI FU FA 67		UNK/INC		UNK/INC	UNK/INC			Contravention of IOTC Resolution 11/03/ Violation de la résolution de la CTOI 11/03	2020-08-12	ICCAT IOTC
SRI FU FA 888		UNK/INC		UNK/INC	UNK/INC			Contravention of IOTC Resolution 11/03/ Violation de la résolution de la CTOI 11/03	2020-08-12	ICCAT IOTC
STS-50	Ayda, Sea Breez 1, Andrey Dolgov, Std No. 2, Suntain No.2, Sun Tai No. 2, Shinsei Maru No. 2	Togo	Cambodia, Korea, Philippines, Japan, Namibia, Togo [CCAMLR]	5VDR2	8514772		Maruha Corporation (Taiyo Namibia, Taiyo Susan, Taiyo A & F Co. Ltd, Sun Tai International Fishing Corp, STD Fisheries Co. Ltd, Red Star Co. Ltd, Poseidon	Landing IUU catch (25 May 2016), Sighting in Area 57 (06 Apr 2017)	2020-08-11	CCAMLR GFCM ICCAT IOTC SEAFO
Summer Refer	Okapi Marta	Unknown			7816472				2020-08-11	GFCM
Ta Fu 1		Unknown							2020-08-11	GFCM IATTC ICCAT IOTC
Tching Ye No 6	El Diria I	Unknown	Belize						2020-08-11	GFCM IATTC ICCAT IOTC
TIAN LUNG NO.12		UNK/INC		UNK/INC	UNK/INC			Contravention of IOTC Resolution 11/03/ Violation de la résolution de la CTOI 11/03	2020-08-12	ICCAT IOTC
Trinity	Yucatan Basin, Exembre, Fonte nova, Jawhara [SEAFO /NAFO]	Unknown	Ghana, Panama, Morocco	Unknown (3EGV5, V3XB, H02933)	7321374			Last known location: Port in Tema, Ghana (Sep 2011)	2020-08-11	GFCM ICCAT IOTC NAFO NEAFC SEAFO

Wen Teng No 688	apparently changed to MAHKOIA ABADI No 196	Unknown	Belize						2020-08-11	GFCM IATTC ICCAT IOTC
XIN SHI JI 16	HSINLONG No. 5	Fiji		3DTN	7637527	Xin Shi Ji Fisheries Ltd. 346 Waimanu Road, Suva, Fidji	Xin Shi Ji Fisheries Ltd.	Contravention of IOTC Resolution 17/03/Violation de la résolution de la CTOI 17/03	2020-08-12	IOTC
XING HAI FEN	OCEAN LION	PANAMA	EQUATORIAL GUINEA	3FHW5	7826233	Ocean Lion Shipping S.A.,Panama City, Panama	Ocean Lion Shipping S.A.,Panama City, Panama	Contravention of IOTC Resolution 02/04, 02/05, 03/05/ Violation de la résolution de la CTOI 02/04, 02/05, 03/05.	2021-04-05	ICCAT IOTC
YI HONG 3		UNK/INC		UNK/INC	UNK/INC			Contravention of IOTC Resolution 11/03/ Violation de la résolution de la CTOI 11/03	2020-08-12	ICCAT IOTC
Yu Fong 168		Unknown	Chinese Taipei	BJ4786		Chang Lin Pao-Chun, 161 Sanmin Rd., Liouciuo Township, Pingtung County 929, Chinese Taipei		Contravention of IOTC Resolution 11/03/ Violation de la résolution de la CTOI 11/03	2020-08-11	GFCM ICCAT IOTC
Yu Maan Won		Unknown	Georgia					Fishing in the Exclusive Economic Zone of the Republic of the Marshall Islands without permission and in contravention of Republic of the Marshall Islands's laws and regulations. (CMM 2007-03, para 3b). Contravention of	2020-08-11	GFCM ICCAT IOTC
YUANDA 6		Unknown		Not known	412356488		Not known	A Japanese patrol vessel sighted this vessel conducting fishing operation in the Convention area at 25°45'9N, 147°07'06E on April 15, 2019. This nameless vessel (assumed "YUANDA6" from the vessel's MMSI 412356488) was	2020-08-11	NPFC
YUANDA 8		Unknown			412365486	Not known	Not known		2020-08-11	NPFC

YUTUNA 3	HUNG SHENG NO. 166	UNK/INC		CPA 212	UNK/INC	Yen Shih Hsiung, Room 11 E. No.3 Tze Wei Forth Road, Kaohsiung, Taiwan, China	Mr. Lee, Shih-Yuan, UNK/INC	Contravention of IOTC Resolution 11/03/ Violation de la résolution de la CTOI 11/03	2020-08-12	ICCAT IOTC
YUTUNA NO. 1		UNK/INC		CPA 302	UNK/INC	Tseng Ming Tsai, Room 11-E, No. 3 Tze Wei Fort Road, Kaohsiung, Taiwan, China	Mr. Yen, Shih-Shiung, UNK/INC	Contravention of IOTC Resolution 11/03/ Violation de la résolution de la CTOI 11/03	2020-08-12	ICCAT IOTC
ZHE LING YU LENG 90055		Unknown		Not known	Not known	Not known	Not known	It was seen at 40 25.3'N, 149 13.2'E on 29 May 2016. (Port displayed on the vessel: Wenling; Vessel type: Carrier vessel; Tonnage: 600t) MMSI: 412000000/413202046	2020-08-11	IOTC NPFC
ZHE LING YU LENG 905		Unknown		Not known	Not known	Not known	Not known	It was seen at 42 45.6'N, 152 45.8'E on 24 Aug 2016. (Port displayed on the vessel: Wenling; Vessel type: Carrier vessel; Tonnage: 1000t) MMSI: 412000000/412000256	2020-08-11	IOTC NPFC
ZHEXIANG YU 23029		Unknown			412123526	Not known	Not known	A Japanese patrol vessel sighted this fishing vessel in the Convention area at 25°42'03N, 147°11'02E on April 15, 2019. This vessel apparently had just finished as the gear was wet. the vessel name, which was not registered on	2020-08-11	NPFC
ZHI MING		Mongolia		JVAW7		INTERA COMPANY SA (IMO Company No. 5942421), Suite 1203, 12th Floor, Ocean Business Plaza Building, Calle Aguilino de la Guardia y Calle 47 Este,	INTERA COMPANY SA	Vessel suspected to have carried out IUU fishing activities in the Convention area, observed near the port of Shidao (CNSHD)	2021-04-05	ICCAT
ZHOU YU 651		Unknown		Not known	Not known	Not known	Not known	It was seen at 42 30'2N, 152 05'4E on 29 Sep 2016. (Port displayed on the vessel: Fungcheng; Vessel type; Lighted lift net vessel; Tonnage: 850t)	2020-08-11	IOTC NPFC
ZHOU YU 652		Unknown		Not known	Not known	Not known	Not known	It was seen at 42 48.9'N, 152 48.2'E on 7 Sep 2016. Port of registry was hidden by paint. (Vessel type; Lighted lift net vessel; Tonnage: 820t) MMSI: 42569986	2020-08-11	IOTC NPFC

ZHOU YU 653		Unknown		Not known	Not known	Not known	Not known	It was seen with LU RONG YU YUN 56219 and ZHOU YU 656 at 42 11.9'N, 151 14.6'E on 30 Sep 2016. (Port displayed on the vessel: Fungcheng; Vessel type; Lighted lift net vessel; Tonnage: 850t)	2020-08-11	IOTC NPFC
ZHOU YU 656		Unknown		Not known	Not known	Not known	Not known	It was seen with LU RONG YU YUN 56219 and ZHOU YU 656 at 42 11.9'N, 151 14.6'E on 30 Sep 2016. (Port displayed on the vessel: Fungcheng; Vessel type; Lighted lift net vessel; Tonnage: 850t)	2020-08-11	IOTC NPFC
ZHOU YU 657		Unknown		Not known	Not known	Not known	Not known	It was seen at 42 35.5'N, 152 6.7'E on 12 Sep 2016. (Port displayed on the vessel: Zhoushan; Vessel type; Lighted lift net vessel; Tonnage: 600t)	2020-08-11	IOTC NPFC
ZHOU YU 658		Unknown		Not known	Not known	Not known	Not known	It was seen at 40 12.3'N, 148 40.5'E on 29 May 2016 and at 42 46.7'N, 152 41.2'E on 7 Sep 2016. (Port displayed on the vessel: Zhoushan; Vessel type; Lighted lift net vessel; Tonnage: 600t)	2020-08-11	IOTC NPFC
ZHOU YU 659		Unknown		Not known	Not known	Not known	Not known	It was seen in the NPFC area on 2, 4, 13, 17 Jun and 7 Sep 2016. On 4 Jun the vessel name on the right side was hidden by paint. (Port displayed on the vessel: Zhoushan; Vessel type: Lighted lift net vessel; Tonnage: 600t)	2020-08-11	IOTC NPFC
ZHOU YU 660		Unknown		Not known	Not known	Not known	Not known	It was seen in the Japanese EEZ on 10 May 2016 and in NPFC area multiple times from May to Sep 2016. On 10 May the vessel showed Korean flag but changed the Korean to Japanese flag when the Japanese patrol vessel	2020-08-11	IOTC NPFC
ZHOU YU 661		Unknown		Not known	Not known	Not known	Not known	It was seen in the Japanese EEZ on 10 and 13 May 2016 and in NPFC area on 15, 29 May and 7 Sep 2016. The vessel names on the left and right side changed frequently (see the photos). The vessel showed Japanese flag in May. But	2020-08-11	IOTC NPFC

CC-05-07

5th Compliance Committee of the Southern Indian Ocean Fisheries Agreement
(CC5)
1-3 July 2021 (online)

Renewal of Comoros status as a Cooperating Non-Contracting Party

Relates to agenda item: 9

Working paper Info paper

Delegation of Comoros

Abstract

Comoros asks to renew its status as a Cooperating Non-Contracting Party of SIOFA.

Recommendations

The CC to consider the request of Comoros.

UNION DES COMORES

Unité – Solidarité – Développement

MINISTRE DE L'AGRICULTURE, DE LA PECHE,
ET DE L'ENVIRONNEMENT

Moroni, le 02 mai 2021

DIRECTION GENERALE
DES RESSOURCES HALIEUTIQUES

LE DIRECTEUR GENERAL

N°21/ 14 /MAPE / DGRH

To,
The Executive Secretary of SIOFA
C/O DAAF, Bâtiment B, Parc de la Provence,
97489, Saint-Denis Cedex, La Réunion

Object: Comoros: renewal the status as cooperating party to SIOFA.

Dear Executive Secretary,

In accordance with the rule 17 of the Rules of Procedure, concerning the participation of Cooperating Non-Contracting Party to SIOFA, the Union Of The Comoros wishes to ask for the renewal in 2021 of its status as cooperating party to SIOFA.

The Union Of The Comoros undertakes to achieve the objectives of the Agreement, comply with the conservation and management measures and all other decisions and resolutions adopted pursuant to the Agreement, take appropriate measures to ensure that its fishing activities do not undermine the effectiveness of the conservation and management measures and all other decisions and resolutions adopted pursuant to the Agreement, and consult with the Meeting of the Parties to develop any other criteria for admission as a Cooperating Non-Contracting Party or Cooperating Non-Participating Fishing Entity specific to its situation.

To this end the Union Of The Comoros has carried out during 2020 activities which are reported in our last annual report, all aspects of which have been respected.

Counting on your broad collaboration, we send you our best regards.

The Director General



Annex M

Correspondence in relation to the application of South Africa as a Cooperating non-contracting Party to SIOFA.



**MINISTER
FORESTRY, FISHERIES AND THE ENVIRONMENT
REPUBLIC OF SOUTH AFRICA**

Private Bag X447, Pretoria, 0001, Environment House, 473 Steve Biko Road, Tel: (012) 399 8743
Private Bag X9052, Cape Town, 8000, Tel: (021) 469 1500, Fax: (021) 465 3362

Ref: EDMS 203437

Mr Thierry Clot
Executive Secretary Southern Indian Ocean Fisheries Agreement (SIOFA)
Batiment B, Pare de la Providence 97489
Saint-Denis Cedex, La Réunion
France

Tel: + 262 693 444 495

Email: thierry.clot@siofa.org/www.apsoi.org/

Dear Mr Clot

**SOUTH AFRICA APPLICATION TO BECOME A COOPERATING, NON CONTRACTING MEMBER
OF THE SOUTHERN INDIAN OCEAN FISHERIES AGREEMENT**

The Department of Forestry, Fisheries and the Environment (DFFE) would like to take this opportunity to request the honourable member parties of the Southern Indian Ocean Fisheries Agreement (SIOFA) to kindly consider the request of South Africa (SA) to become a Cooperating, Non Contracting Member (CNC) of the SIOFA.

South Africa has for many years been a responsible fishing nation with her active participation in implementing the conservation and management measures of several Regional Fisheries Management Organisations (RFMOs) either as a full contracting cooperating party member or cooperating non contracting member party. South Africa takes pride in implementing the port state measures and having acceded to the 2009 FAO Port State Measures Agreement (PSMA) to prevent, deter and eliminate illegal, unregulated and unreported fishing (IUU) on 26 February 2016.

Please accept the assurance of my highest consideration and esteem.

Yours sincerely

**MS B D CREECY, MP
MINISTER OF FORESTRY, FISHERIES AND THE ENVIRONMENT**

DATE: 5/6/2021

